

GS044B

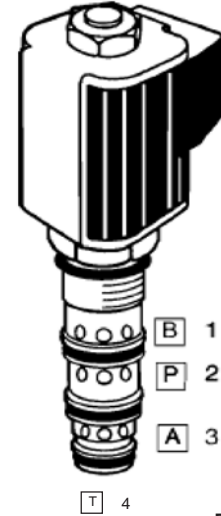
UP TO 30 L/MIN 8 USGPM  
AND 350 BAR 5000 PSI



## SOLENOID SPOOL VALVE 2/4 WAY REVERSING

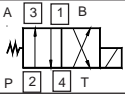
FOUR way on-off reversing spool valve is designed to operate double-acting cylinders, pilot circuits and bi-directional motors, etc.

- High flow capacity with reduced space requirement.
- One piece cartridge housing ensures internal concentricity.
- Waterproof coil hermetically sealed, requires no O-rings.
- Symmetrical coil can be reversed without affecting performance.
- Manual override are available.



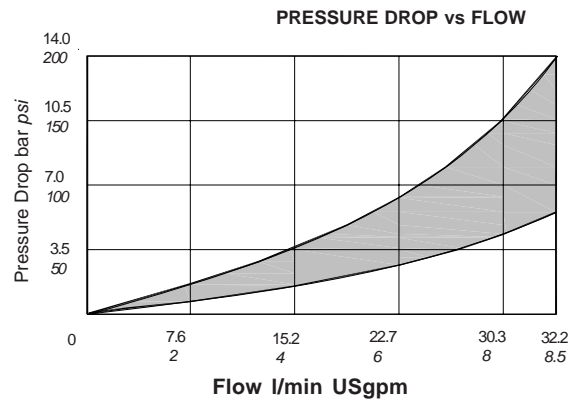
PATENT  
#5,002,253

### SPECIFICATIONS

BASIC MODEL NO	GS04 4B
SYMBOL	
MAX. RATED FLOW	30 l/min 8 USgpm
MAX. OPERATE PRESSURE	350 bar 5000 psi
MAX TANK PRESSURE	210 bar 3000 psi
FUNCTION	FREE FLOW P → A & B → T WHEN SOLENOID IS DE-ENERGIZED
SERIES CA COIL WATTS.(100% DUTY CYCLE)	28W ("P" COIL)
INSTALLATION	UNRESTRICTED
FLUID	MINERAL OIL OR SYNTHETIC FLUID WITH LUBRICANT PROPERTIES
IDEAL VISCOSITY	5-50 cSt. 42-232 SSU
SEAL MATERIAL/ TEMPERATURE	NITRILE(std) -30°C to +90°C BUNA-N -22°F to +194°F
FILTRATION	25 MICRONS(Nom.) OR BETTER
CAVITY	4C
CARTRIDGE WEIGHT	0.13kg 0.28lb
COIL WEIGHT	0.29kg 0.64lb

### TYPICAL PERFORMANCE

Measured at 28cSt 135 SSU (Average port to port. Cartridge only)



Measured at 75% of nominal current

### OPERATING LIMITS

