

# Relief, direct acting poppet type

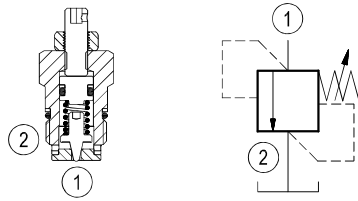
## Special cavity, Size 348

VS-5-C

04.11.44 - X - Y - Z

### Description

Flow is blocked from 1 to 2 until pressure increases to meet the selected valve setting, lifting the poppet from its seat and allowing relief flow through 2 to tank. Pressure at 2 is additive to the relief setting of the valve. The cartridge is suitable only for pilot or thermal relief applications.



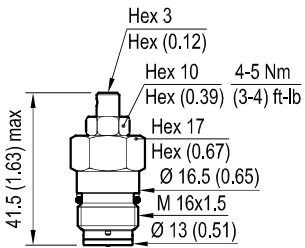
### Technical data

Max pressure	bar (psi)	400 (5800)
Max flow	l/min (gpm)	1.5 (0.4)
Installation torque	Nm (ft-lb)	27-33 (20-24)
<b>Special Cavity</b>		<b>348</b>
Weight	kg (lbs)	0.05 (0.11)
Fluid temperature range	°C (°F)	between -30 (-22) and +100 (+212)

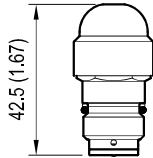
The pressure setting must be done after installation, because the spring cannot be compressed while the threaded adjuster must be fully released prior to unscrewing the cartridge from cavity.

### Dimensions

Leakproof hex socket screw

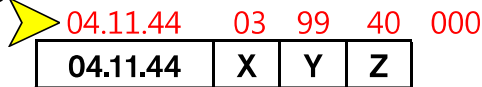


OPTION  
Sealing cap  
ordering code 030501012  
R930000473



[ mm (Inches) ]

### Ordering code



Relief, direct acting poppet type

Adjustments

= 03 Leakproof hex. socket screw

Special cavity Size 348

	SPRINGS		
	Adj. press. range bar (psi)	Press. increase bar/turn (psi/turn)	Std. setting cracking pressure bar (psi)
= 05	25-50 (363-725)	24 (348)	50 (725)
= 10	50-100 (725-1450)	47 (682)	100 (1450)
= 20	100-210 (1450-3045)	97 (1407)	200 (2900)
<b>= 40</b>	<b>200-400 (2900-5800)</b>	<b>215 (3118)</b>	<b>350 (3500)</b>

Type	Material number
041144039905000	R930000196
041144039910000	R930000199
041144039920000	R930000200

Type	Material number
<b>041144039940000</b>	<b>R930000201</b>