

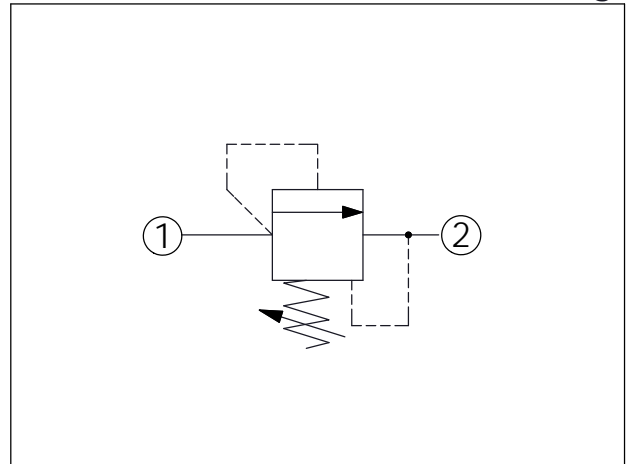
Ordering Code: **RD-08W-X-Y-Z**

Control Option:
Maximum extension
from locating shoulder.
(Z:L Control shown)

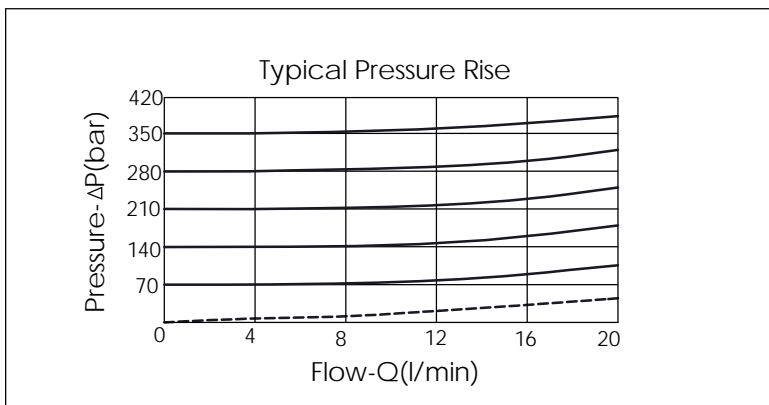
3.0 Hex.
M6x1.0
10.0 Hex.
Torque 5-7 Nm
24.0 Hex.
3/4"-16UNF-2A
Out ②
In ①

41
5.0
28
Locating Shoulder

UNIT:mm



TECHNICAL DATA	
Max. Operating pressure:	350 bar
Rated flow:	20 l/min
Cavity-Tooling:	08W-2
Installation torque:	25-35 Nm
Weight:	0.11 (Z=L) kg
Will accept maximum pressure at port 2; suitable for use in cross port relief circuits.	



X	OPERATION	
20	1 to 2 (P to T)	
<ul style="list-style-type: none"> Response Time-Typical (2 ms) Maximum Leakage (0.2 cc/min.) Dirt tolerant This valve cannot limit max. pressure adjustment If you would like to assemble with other knob (for example, Z option: K, T), please kindly choose RD08W20-Y-Z-A 		

Y	PRESSURE SETTING	
A	80-210 bar (140 bar Standard Setting)	
D	30-55 bar (40 bar Standard Setting)	
E	10-28 bar (14 bar Standard Setting)	
K	40-155 bar (70 bar Standard Setting)	
W	150 -350 bar (210 bar Standard Setting)	

Z	OPTIONS	
L	Leakproof hex. socket screw.	
F	Handknob and locknut.	