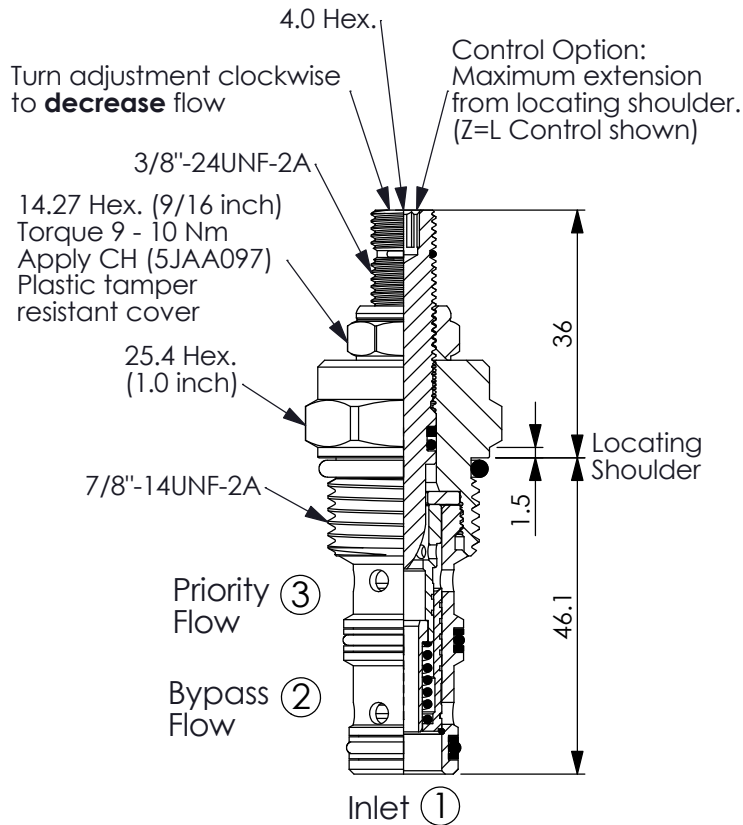
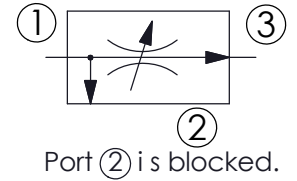
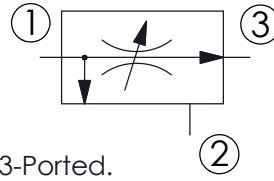
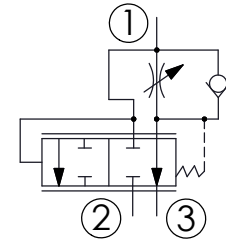


Ordering Code: **FR-10W-X-Y-Z**



UNIT:mm

Illustrations / detail are
for reference only.
Data subject to change.

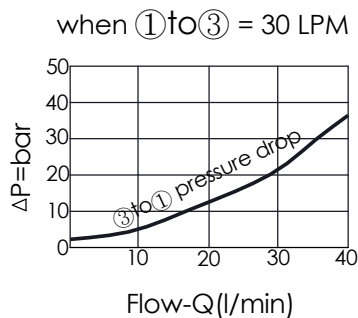
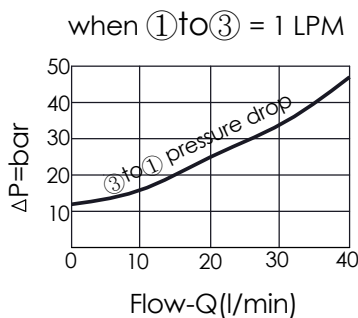
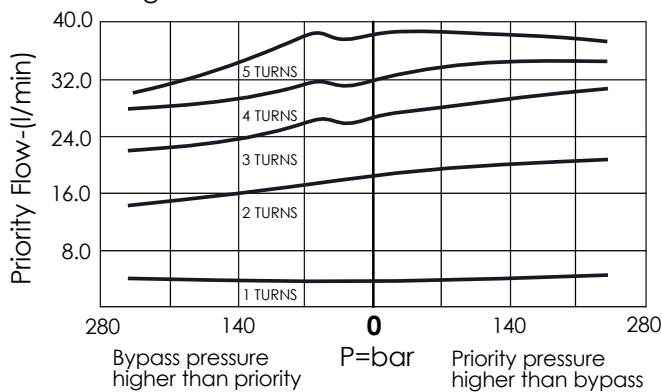


TECHNICAL DATA

Max. pressure:	240	bar
Inlet flow at port ①:	38 LPM nominal	57 LPM max.
Cavity-Tooling:	10W-3	
Installation torque:	35 - 45	Nm
Weight:	0.16 (Z=L)	kg

Note: It can be used as a priority-type flow regulator or a restrictive-type 2-way flow regulator when the bypass port (port ②) is blocked.

Port ① to Port ③ $\Delta P=14$ bar
3-Ported
Regulated Flow vs. Load at 38 LPM Inlet



X PRIORITY FLOW RANGE

33	Flow Rate :	
	3-ported regulated flow	38 LPM
	2-ported regulated flow	34 LPM

For Lower flow rates, see the FR-10W-31 valve

Y SPRING RANGE

N	Standard, $\Delta P=14$ bar (Priority Flow 1 - 38 LPM fully adjustable)
----------	--

Z OPTIONS

L	Leakproof hex. socket screw.	
E	Handknob and locknut.	
B	Handknob and aluminum locknut.	
BA	Handknob and aluminum locknut.	
K	Handknob with Lock Knob. (Order Code: 6ZAK001)	