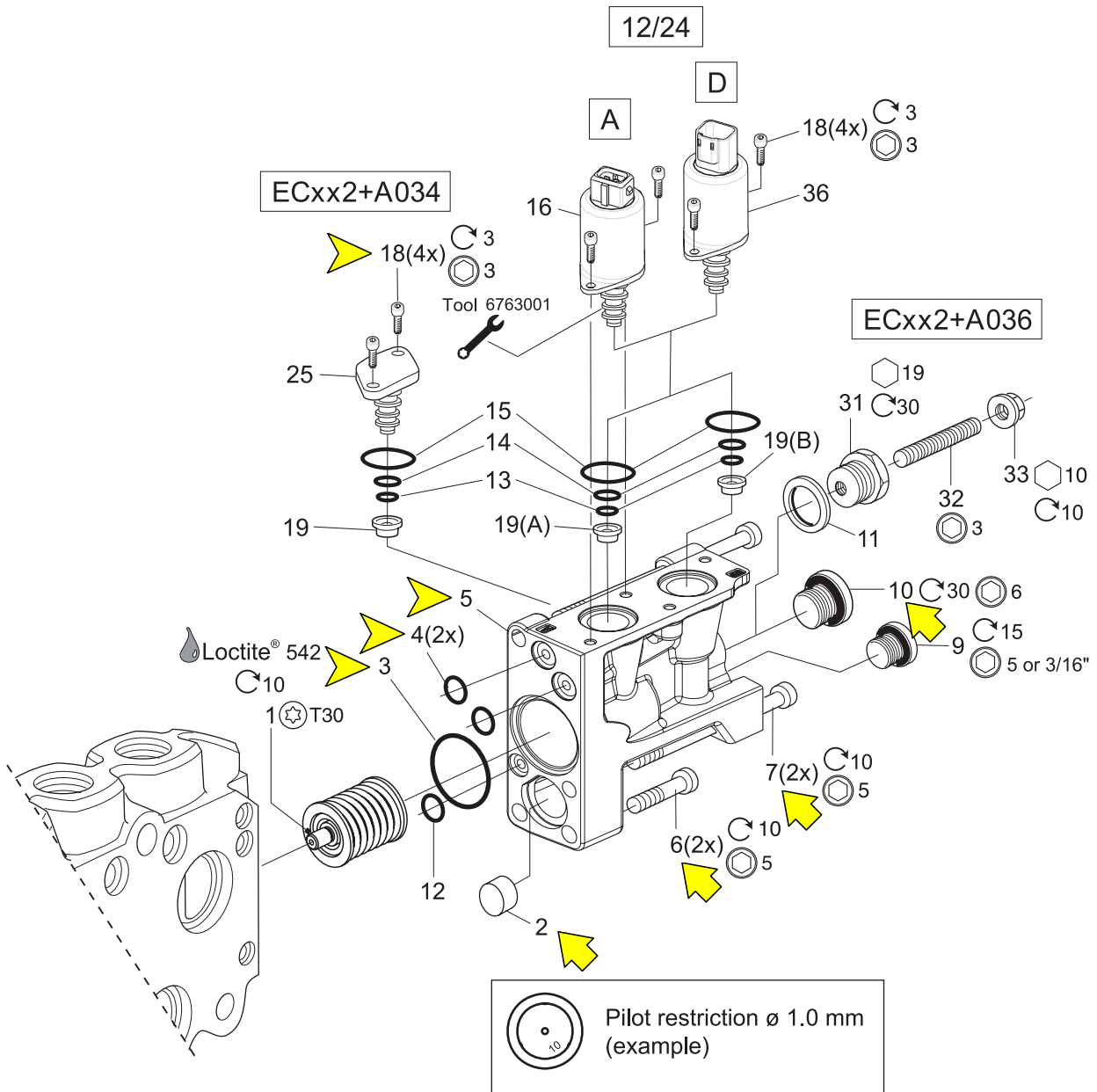


Spool Actuators, Side B

EC2, ECH2, ECHL2, ECS2, ECP2, ECSP2, A, D, 12, 24, A034, A036



Spool Actuators, Side B

| See Customer Specification | | | | |
|-----------------------------------|--------------|------------|--------------------------------|---|
| Code | Pos | Part | Description | Remarks / Items |
| EC2, ECH2, ECS2, ECP2, ECSP2 | 50 | 393000K343 | Spring kit, std (5.5-15) bar | 1 |
| ECHL2 | 50 | 393000K342 | Spring kit, Light (5.5-11) bar | 1 |
| ECxx2 + G | 50 + 04 | 6763033 | Cap kit ECxx2, B-side, (BSP) | 2, 3, 4(2x), 5, 6(2x), 7(2x), 10, 12, 18(4x) |
| ECxx2 + U | 50 + 04 | 6761071 | Cap kit ECxx2, B-side, (UNF) | 2, 3, 4(2x), 5, 6(2x), 7(2x), 9, 10, 12, 18(4x) |
| A036 + EC2, ECS2, ECP2, ECSP2 + G | 59 + 50 + 04 | 6763032 | Cap kit A036, (BSP) | 2, 3, 4(2x), 5, 6(2x), 7(2x), 9, 11, 12, 18(4x), 31, 32, 33 |
| ECxx2 + G | 50 + 04 | 393000K846 | Seal kit (BSP) | 3, 4(2x), 10, 12 |
| ECxx2 + U | 50 + 04 | 393000K871 | Seal kit (UNF) | 3, 4(2x), 9, 10, 12 |
| A034 | 89A/89B | 6761087 | Blocking plug PS25 | 25 [13, 14, 15], 18(2x), 19 |
| A036 | 59 | 393000K036 | Spool stroke limiting kit | 11, 31, 32, 33 |
| ECxx2 | 50 | - | Plug VST11/4EDCF | 10 |
| ECxx2/A036 + U | 50/59 + 04 | - | Plug 4HP5ON-S | 9 |
| A036 + G | 59 + 04 | - | Plug VST11/8EDCF | 9 |
| ECS2,ECSP2,ECH2,ECHL2+12+A | 50+05+56 | 6763059 | PS25 solenoid valve, 12VDC | 16 [13, 14, 15], 18(2x), 19 No man. override. |
| ECS2,ECSP2,ECH2,ECHL2+24+A | 50+05+56 | 6763060 | PS25 solenoid valve, 24VDC | 16 [13, 14, 15], 18(2x), 19 No man. override. |
| ECS2,ECSP2,ECH2,ECHL2+12+D | 50+05+56 | 6763061 | PS25 solenoid valve, 12VDC | 16 [13, 14, 15], 18(2x), 19 No man. override. |
| ECS2,ECSP2,ECH2,ECHL2+24+D | 50+05+56 | 6763062 | PS25 solenoid valve, 24VDC | 16 [13, 14, 15], 18(2x), 19 No man. override. |
| EC2, ECP2 + 12 + A | 50+05+56 | 6761084 | PS25MO solenoid valve, 12VDC | 16 [13, 14, 15], 18(2x), 19 Man. override. |
| EC2, ECP2 + 24 + A | 50+05+56 | 6761085 | PS25MO solenoid valve, 24VDC | 16 [13, 14, 15], 18(2x), 19 Man. override. |
| ECxx2 | 50 | 6760507 | Seal kit PS25 | 13, 14, 15 (5 pcs in kit) |
| ECxx2 + 2,0 | 50+55A/55B | 398000K603 | Pilot orifice Ø2.0, marked 2 | 19 (5 pcs in kit) |
| ECxx2 + 1,5 | 50+55A/55B | 6760325 | Pilot orifice Ø1.5, marked 15 | 19 (5 pcs in kit) |
| ECxx2 + 1,3 | 50+55A/55B | 6760806 | Pilot orifice Ø1.3, marked 13 | 19 (5 pcs in kit) |
| ECxx2 + 1,2 | 50+55A/55B | 398000K604 | Pilot orifice Ø1.2, marked 12 | 19 (5 pcs in kit) |
| ECxx2 + 1,1 | 50+55A/55B | 6760805 | Pilot orifice Ø1.1, marked 11 | 19 (5 pcs in kit) |
| ECxx2 + 1,0 | 50+55A/55B | 6760804 | Pilot orifice Ø1.0, marked 10 | 19 (5 pcs in kit) |
| ECxx2 + 0,9 | 50+55A/55B | 398000K602 | Pilot orifice Ø0.9, marked 9 | 19 (5 pcs in kit) |
| ECxx2 + 0,8 | 50+55A/55B | 6760326 | Pilot orifice Ø0.8, marked 8 | 19 (5 pcs in kit) |
| ECxx2 + 0,7 | 50+55A/55B | 6760803 | Pilot orifice Ø0.7, marked 7 | 19 (5 pcs in kit) |
| ECxx2 + 0,6 | 50+55A/55B | 398000K601 | Pilot orifice Ø0.6, marked 6 | 19 (5 pcs in kit) |