

Zahnwelle ANSI B 92.1,
9T 16/32 SP
Flat Root Side Fit,
jed. Zahndicke $\overline{s} = 2.357 -0.030$

SPLINE SHAFT ANSI B 92.1,
9T 16/32 SP
FLAT ROOT SIDE FIT,
TOOTH THICKNESS $\overline{s} = 2.357 -0.030$

HINWEISE UND ANGABEN

Betriebsbedingungen siehe Y 510 201 598

Die Darstellung zeigt eine rechtsdrehende Pumpe (Auf Antriebswelle gesehen).
Bei linksdrehender Pumpe ist Druck- und Sauganschluß vertauscht.
Die Pumpe darf nur in angegebener Drehrichtung drehen.

Alle Ölanschlüsse für Transport und Lagerung staubdicht
verschlossen, z.B. mit Kunststoffstopfen.

ADDITIONAL INFORMATION

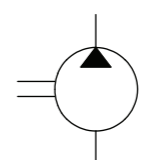
WORKING CONDITIONS SEE Y 510 201 598

CW ROTATION SHOWN.
CCW ROTATION PUMPS HAVE PRESSURE AND SUCTION PORT
ON OPPOSITE SIDE. PUMP MUST BE DRIVEN IN PROPER DIRECTION ONLY.

ALL OIL PORTS CLOSED PROPERLY AGAINST DUST FOR TRANSPORT
AND STORAGE, E.G. WITH PLASTIC CLOSURE CAPS.

| | | | | | | | | | |
|---------------|---------------|--------------------|-----------|------|------|-----|------|-------|---|
| B 510 241 228 | 0 510 725 361 | AZPF-10-022LRR20MB | links/CCW | 22.5 | 2500 | 210 | 55.1 | 113.0 | 2 |
| B 510 241 274 | . | AZPF-12-022LRR20KB | links/CCW | 22.5 | 2500 | 210 | 55.1 | 113.0 | 2 |
| B 510 241 247 | 0 510 725 077 | AZPF-12-022RRR20KB | rechts/CW | 22.5 | 2500 | 210 | 55.1 | 113.0 | 2 |
| B 510 241 216 | 0 510 725 350 | AZPF-22-022LRR20MB | links/CCW | 22.5 | 3000 | 230 | 61.1 | 125.0 | 2 |
| B 510 241 215 | 0 510 725 045 | AZPF-21-022RRR20MB | rechts/CW | 22.5 | 3000 | 230 | 61.1 | 125.0 | 2 |
| B 510 241 214 | 0 510 625 330 | AZPF-12-019LRR20KB | links/CCW | 19 | 3000 | 230 | 47.5 | 107.6 | 2 |
| B 510 241 213 | 0 510 625 029 | AZPF-12-019RRR20KB | rechts/CW | 19 | 3000 | 230 | 47.5 | 107.6 | 2 |
| B 510 841 295 | . | AZPF-11-019LRR20PB | links/CCW | 19 | 3000 | 230 | 47.5 | 107.6 | 2 |
| B 510 841 288 | . | AZPF-12-016LRR20MB | links/CCW | 16 | 3000 | 280 | 47.5 | 102.6 | 2 |
| B 510 241 212 | 0 510 625 329 | AZPF-10-016LRR20MB | links/CCW | 16 | 3000 | 280 | 47.5 | 102.6 | 2 |
| B 510 841 268 | 0 510 625 103 | AZPF-12-016RRR20KB | rechts/CW | 16 | 3000 | 280 | 47.5 | 102.6 | 2 |
| B 510 241 211 | 0 510 625 028 | AZPF-10-016RRR20MB | rechts/CW | 16 | 3000 | 280 | 47.5 | 102.6 | 2 |
| B 510 841 239 | 0 510 625 091 | AZPF-12-016RRR20PB | rechts/CW | 16 | 3000 | 280 | 47.5 | 102.6 | 2 |
| B 510 841 249 | 0 510 625 095 | AZPF-12-016RRR20KB | rechts/CW | 16 | 3000 | 280 | 47.5 | 102.6 | 2 |
| B 510 241 210 | 0 510 525 325 | AZPF-12-014LRR20MB | links/CCW | 14 | 3000 | 280 | 47.5 | 99.2 | 2 |
| B 510 841 230 | 0 510 525 093 | AZPF-12-014RRR20MB | rechts/CW | 14 | 3000 | 280 | 47.5 | 99.2 | 2 |
| B 510 841 294 | . | AZPF-11-014RRR20PB | rechts/CW | 14 | 3000 | 280 | 47.5 | 99.2 | 2 |
| B 510 241 209 | 0 510 525 020 | AZPF-10-014RRR20MB | rechts/CW | 14 | 3000 | 280 | 47.5 | 99.2 | 2 |
| B 510 841 266 | 0 510 525 387 | AZPF-12-011LRR20MB | links/CCW | 11 | 3500 | 280 | 47.0 | 94.2 | 2 |
| B 510 241 208 | 0 510 525 324 | AZPF-11-011LRR20KB | links/CCW | 11 | 3500 | 280 | 47.0 | 94.2 | 2 |
| B 510 241 207 | 0 510 525 019 | AZPF-12-011RRR20MB | rechts/CW | 11 | 3500 | 280 | 47.0 | 94.2 | 2 |
| B 510 241 206 | 0 510 425 314 | AZPF-12-008LRR20KB | links/CCW | 8 | 4000 | 280 | 43.2 | 89.2 | 2 |
| B 510 241 205 | 0 510 425 020 | AZPF-10-008RRR20MB | rechts/CW | 8 | 4000 | 280 | 43.2 | 89.2 | 2 |
| B 510 841 259 | 0 510 325 030 | AZPF-12-007RRR20KB | rechts/CW | 7 | 4000 | 280 | 42.5 | 87.6 | 2 |
| B 510 241 204 | 0 510 325 313 | AZPF-10-005LRR20MB | links/CCW | 5.5 | 4000 | 280 | 41.1 | 85.1 | 1 |
| B 510 241 203 | 0 510 325 013 | AZPF-10-005RRR20MB | rechts/CW | 5.5 | 4000 | 280 | 41.1 | 85.1 | 1 |
| B 510 241 202 | 0 510 225 314 | AZPF-10-004LRR20MB | links/CCW | 4 | 4000 | 280 | 39.9 | 82.6 | 1 |
| B 510 241 201 | 0 510 225 013 | AZPF-10-004RRR20MB | rechts/CW | 4 | 4000 | 280 | 39.9 | 82.6 | 1 |

| Entwurfs- Zeichnungs-Nr. | Bestell-Nr. | Typ-Aufschrift | Dreh- richtung | Volumen [cm ³ /U] | max. Drehzahl [U/min] | max. Druck (intermitt.) [bar] | A | B | VERSION |
|-----------------------------|-------------|----------------|---------------------|---------------------------------|-----------------------------|-------------------------------------|------------|---------|---------|
| DRAWING | PART NUMBER | DESIGNATION | DIR. OF ROTATION | DISPLACEMENT | MAX. SPEED | MAX. PRESSURE | DIMENSIONS | VERSION | |



2014-03-26T13:23:22

| | | | | | | | |
|-------------------|----------|----------------------|----------------------------------|----------------|-------------------------------|---------------------------------|----------------------|
| BV -- | 20140220 | bhl2si | bhl2si | kae9nug1 | 7930 DC-MA/EPE | R7930C000465 | |
| AA -- | 20060127 | fiV2si | | | 7930 DC-MA/EPE | ERSTELLT | |
| Ind./Change/Aend. | YYYYMMDD | Drawn/Gez. | Checked/Prüf. | Releas./Freig. | BWN Resp. dept./Verantw. Abt. | Add. info./Zus. Info. | |
| Lang./Spr. | Syst. | Wght./Gew. | | | | HY GEAR PUMP HY-ZAHNRADPUMPE | Sheet/Bl. 1/1 |
| EN/DE | PE | Scale/M. Stab 1:2 | OFFER DRAWING ANGEBOTSZEICHN. | | | AGZ A 510 241 201 | DP/TD 001 |
| MNR | | | | | Repl. for | Repl. by | Ind. Formst BV A2 |

© Alle Rechte bei Bosch Rexroth AG. auch für den Fall von Schutzrechtsanmeldungen. Jede Verfügungsbefugnis, wie Kopier- und Weitergaberecht, bei uns.
 © This document, as well as the data, specifications and other information set forth in it, are the exclusive property of Bosch Rexroth AG. It may not be reproduced or given to third parties without its consent.
 RA50459212 / 451024 201 / BV.1 / MODEL NAME / DRAFT / BV.1