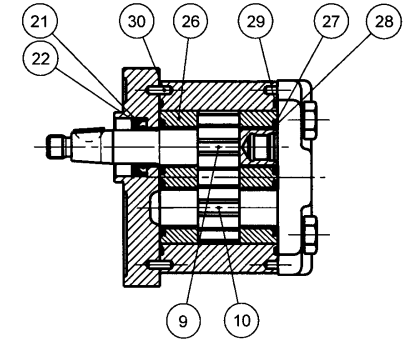
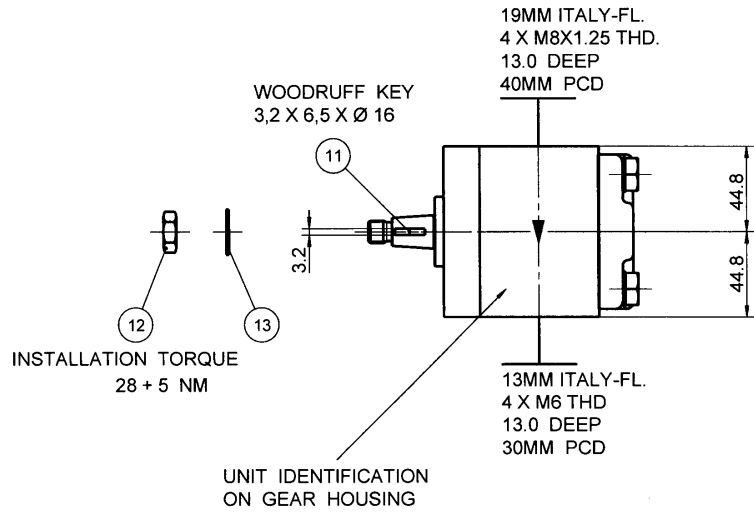
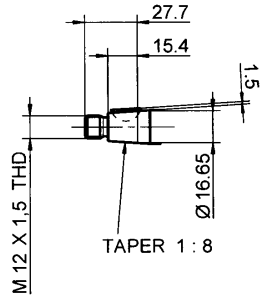


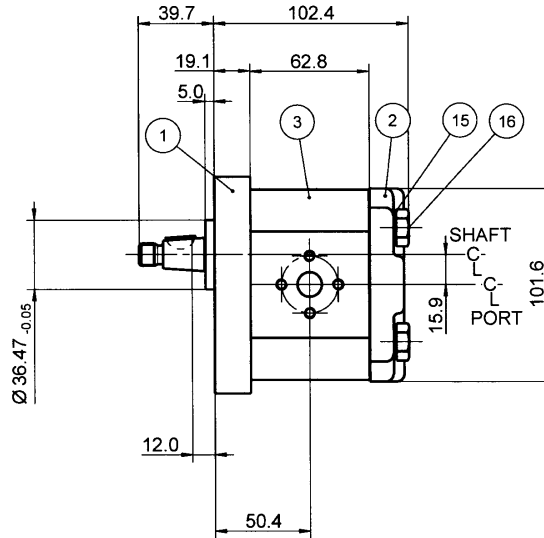
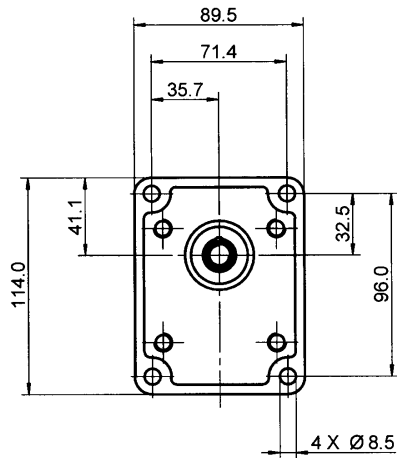
PUMP DATA	
DISPLACEMENT	14,0 ccm
MAX.CONT.PRESSURE	275 bar
SPEED RATE 500 TO 3500 min ⁻¹	
MAX. INPUT SHAFT TORQUE	198 NM
ROTATION	CLOCKWISE



NOTE

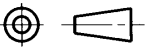
▽ FOR ASSEMBLY INSTRUCTIONS SEE DWG. NO. "511-B1"
"PGP511 PUMP ASSEMBLY INSTRUCTIONS".

ITEM	PART NO	REQD	ITEM	PART NO	REQD
28	8611-015-000	2	SEAL. BK-UP	36	
27	8611-016-00R	2	SEAL. CHAN.	35	
26	8898-207-00U	2	THRBLK/BSHG	34	
25				33	
24				32	
23				31	
22	9211-323-00B	1	RING, SNAP	30	391 2080 078 2
21	8301-019-00K	1	SEAL. LIP	29	9313-145-00B 2



ITEM	PART NO	REQD	DESCRIPTION
20			
19			
18			
17			
16	391 1401 543	4	SCREW (90 MM)
15	391 3782 231	4	WASHER
14			
13	391 3782 307	1	WASHER
12	391 1451 168	1	NUT
11	391 1781 112	1	KEY
10	334 2714 000	1	DRIVEN GEAR
9	334 1914 601	1	DRIVE GEAR
8			
7			
6			
5			
4			
3	334 8114 907	1	HOUSING. GEAR
2	332 3000 100	1	HOUSING. PEC
1	334 5041 202	1	HOUSING. SEC

THIRD ANGLE PROJECTION



EXP NO.

FIRST USED

02 - 04 - 911

334 9111 484

SYM.

REVISIONS

THIS DOCUMENT CONTAINS INFORMATION THAT IS CONFIDENTIAL AND PROPRIETARY TO PARKER HANNIFIN CORPORATION (PARKER). THIS DOCUMENT IS FURNISHED ON THE UNDERSTANDING THAT THE DOCUMENT AND INFORMATION WILL BE NOT COPIED OR DISCLOSED TO OTHERS OR USED FOR ANY PURPOSE OTHER THAN CONDUCTING BUSINESS WITH PARKER, AND WILL BE RETURNED AND ALL FURTHER USE DISCONTINUED UPON REQUEST BY PARKER. ALL RIGHTS RESERVED.

PGP511M0140CS2D3NL2L1B1B1

MATERIAL

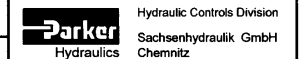
ADM CTR P

REV DTE 000000

H.E.-STD:

wt 3.8 Kg

DIMENSIONS ARE —MM—



DR BY DATE WS 11APR02 CH BY DATE KH 11APR02 SCALE 1/2

334 9111 484

© 2002 Parker-Hannifin Corporation