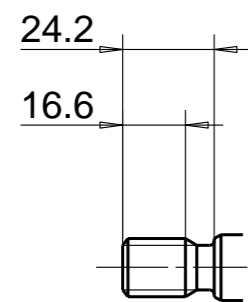
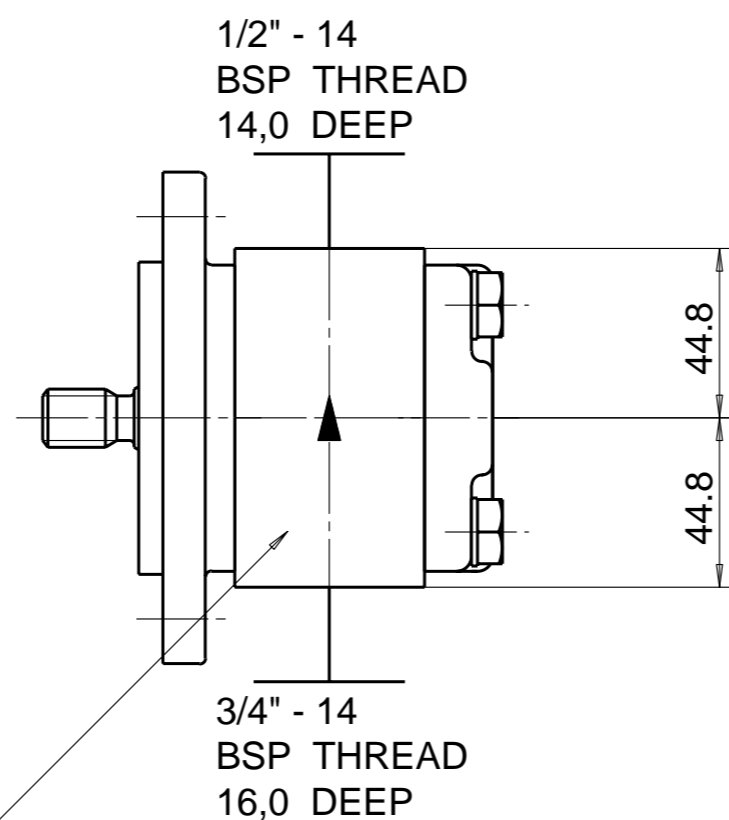


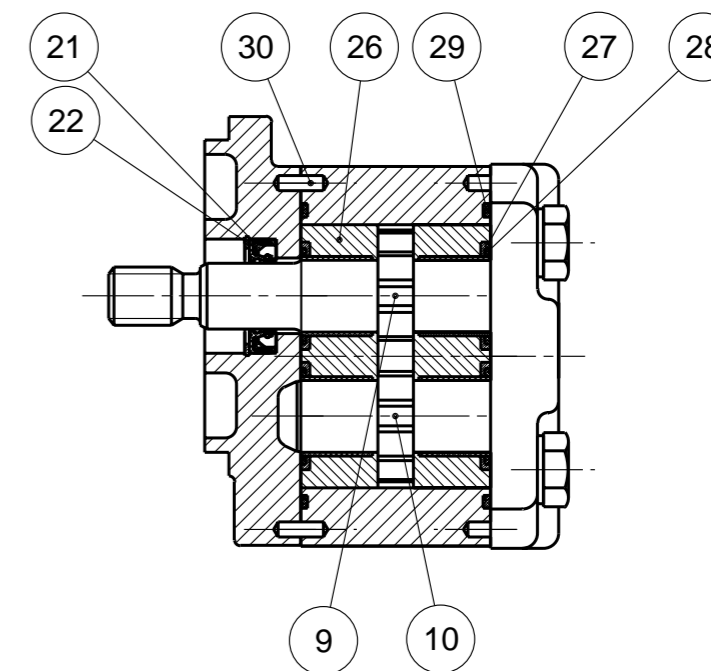
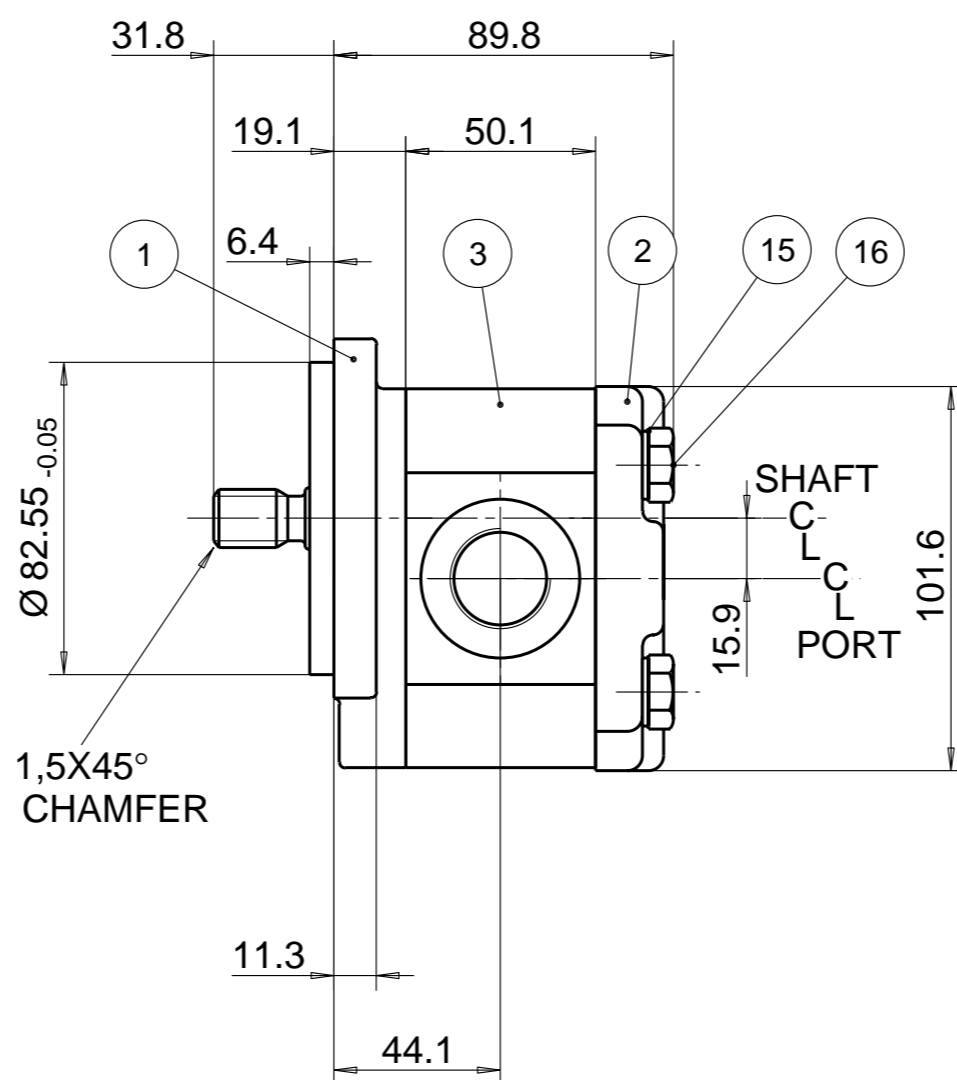
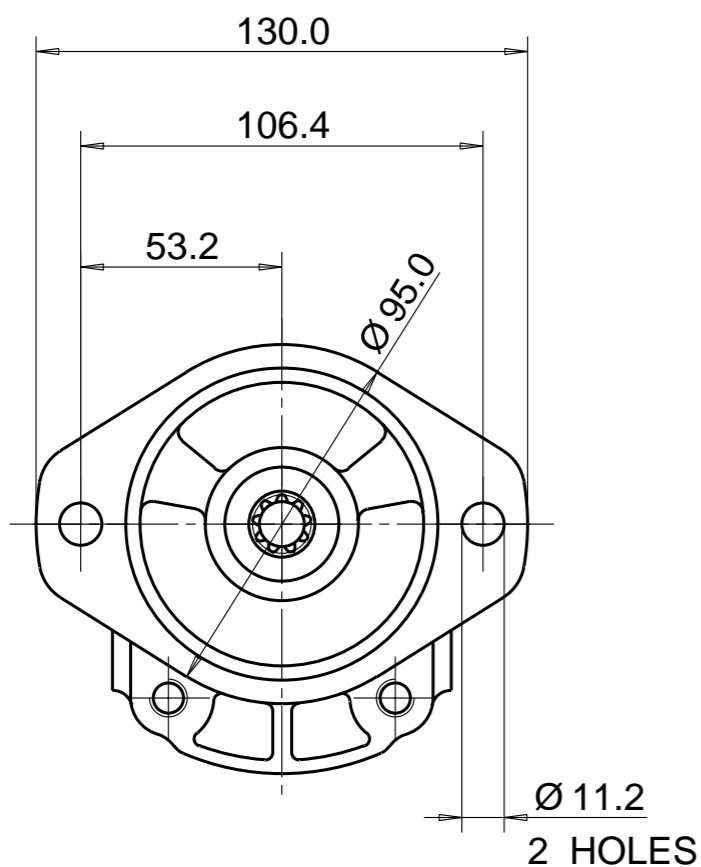
PUMP DATA	
DISPLACEMENT	6,0 ccm
MAX. PRESSURE	250 bar
SPEED RATE	500 TO 3500 min ⁻¹
MAX. INPUT SHAFT TORQUE	86 Nm
ROTATION	ANTI CLOCKWISE



SAE INVOLUTE SPLINE
9 TEETH - 16/32 PITCH
FLAT ROOT SIDE FIT
MAJOR DIA. 15.32 - 15.47
MINOR DIA. 12.281 MAX.



UNIT IDENTIFICATION
(NAMEPLATE)
ON END COVER
OR ON GEAR HOUSING



NOTE

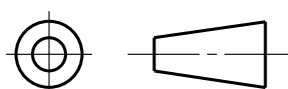
1 FOR ASSEMBLY INSTRUCTIONS SEE DWG. NO. "511-B1"
"PGP511 PUMP ASSEMBLY INSTRUCTIONS".

28	8611-015-000	2	SEAL. BK-UP	36			
27	8611-016-00R	2	SEAL. CHAN.	35			
26	8898-207-00U	2	THRBLK/BSHG	34			
25				33			
24				32			
23				31			
22	9211-323-00B	1	RING, SNAP	30	391 2080 078	2	PIN. DOWEL
21	8301-019-00K	1	SEAL. LIP	29	9313-145-00B	2	SEAL. SECT.

ITEM	PART NO	REQD		ITEM	PART NO	REQD	
------	---------	------	--	------	---------	------	--

20							
19							
18							
17							
16	391 1401 541	4	SCREW (80 MM)				
15	391 3782 231	4	WASHER				
14							
13							
12							
11							
10	334 2706 000	1	DRIVEN GEAR				
9	334 1106 200	1	DRIVE GEAR				
8							
7							
6							
5							
4							
3	334 8106 406	1	HOUSING. GEAR				
2	334 3000 100	1	HOUSING. PEC				
1	334 5021 202	1	HOUSING. SEC				
ITEM	PART NO	REQD					DESCRIPTION

THIRD ANGLE PROJECTION



EXP NO.

FIRST USED

04 - 03 - 901

334 9112 621

A1 DWG REDRAWN

SYM. REVISIONS 17FEB12 RP 12-02-944

THIS DOCUMENT CONTAINS INFORMATION THAT IS CONFIDENTIAL AND PROPRIETARY TO PARKER-HANNIFIN CORPORATION ("PARKER"). THIS DOCUMENT IS FURNISHED ON THE UNDERSTANDING THAT THE DOCUMENT AND THE INFORMATION IT CONTAINS WILL NOT BE COPIED OR DISCLOSED TO OTHERS OR USED FOR ANY PURPOSE OTHER THAN CONDUCTING BUSINESS WITH PARKER, AND WILL BE RETURNED AND ALL FURTHER USE DISCONTINUED UPON REQUEST BY PARKER. ALL RIGHTS RESERVED.

PGP511A0060AA1H2NE5E3B1B1

MATERIAL

H.E.-STD:

ADM CTR P
REV DTE 17FEB12

WT 2.64 kg

DIMENSIONS ARE MM

Parker Pump & Motor Division
Chemnitz

DR. BY DATE CH. BY DATE SCALE
RP 17FEB12 KH 17FEB12 1/2

334 9112 621

© 2012 Parker Hannifin Corporation