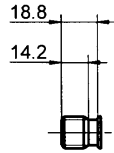
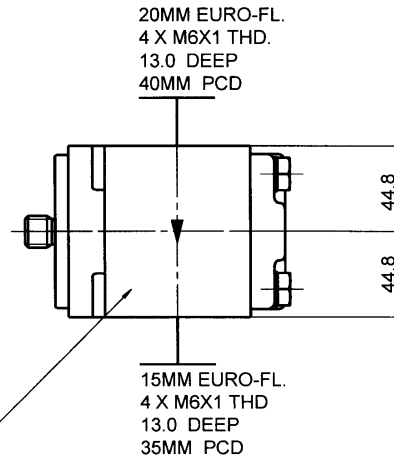


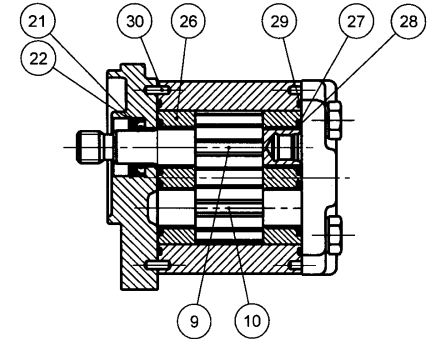
PUMP DATA	
DISPLACEMENT	23,0 ccm
MAX.CONT.PRESSURE	225 bar
SPEED RATE	500 TO 2000 min ⁻¹
MAX. INPUT SHAFT TORQUE	101 NM
ROTATION	CLOCKWISE



DIN 5482 INVOLUTE SPLINE
B 17 X 14; 9 TEETH
FLAT ROOT SIDE FIT
MAJOR DIA. 16.39 - 16.50
MINOR DIA. 13.50
PROFIL OFFSET 0,600 mm

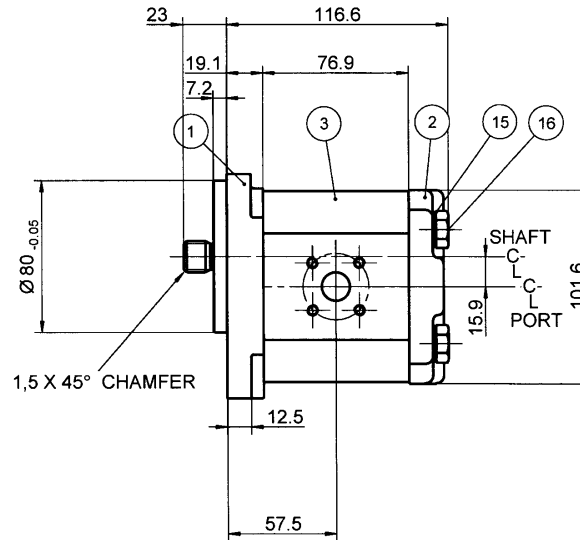
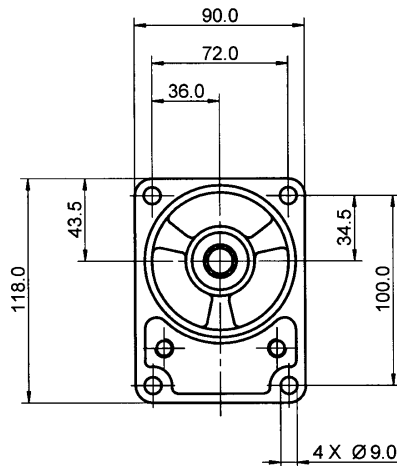


UNIT IDENTIFICATION
ON GEAR HOUSING



NOTE

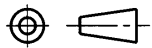
FOR ASSEMBLY INSTRUCTIONS SEE DWG. NO. "511-B1"
"PGP511 PUMP ASSEMBLY INSTRUCTIONS".



ITEM	PART NO	REQD	ITEM	PART NO	REQD
28	8611-015-000	2	SEAL. BK-UP	36	
27	8611-016-00R	2	SEAL. CHAN.	35	
26	8898-207-00U	2	THRBLK/BSHG	34	
25				33	
24				32	
23				31	
22	9211-323-00B	1	RING, SNAP	30	391 2080 078 2 PIN. DOWEL
21	8301-019-00K	1	SEAL. LIP	29	9313-145-00B 2 SEAL. SECT.

20					
19					
18					
17					
16	391 1401 546	4	SCREW (105 MM)		
15	391 3782 231	4	WASHER		
14					
13					
12					
11					
10	334 2723 000	1	DRIVEN GEAR		
9	334 1223 700	1	DRIVE GEAR		
8					
7					
6					
5					
4					
3	334 8123 901	1	HOUSING. GEAR		
2	332 3000 100	1	HOUSING. PEC		
1	334 5041 203	1	HOUSING. SEC		
ITEM	PART NO	REQ'D	DESCRIPTION		

THIRD ANGLE PROJECTION



EXP NO.	
FIRST USED	02 - 04 - 911
334 9111 482	

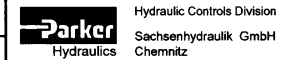
SYM.	REVISIONS

THIS DOCUMENT CONTAINS INFORMATION THAT IS CONFIDENTIAL AND PROPRIETARY TO PARKER HANNIFIN CORPORATION ("PARKER"). THIS DOCUMENT IS FURNISHED ON THE UNDERSTANDING THAT THE DOCUMENT AND INFORMATION WILL BE NOT COPIED OR DISCLOSED TO OTHERS OR USED FOR ANY PURPOSE OTHER THAN CONDUCTING BUSINESS WITH PARKER, AND WILL BE RETURNED AND ALL FURTHER USE DISCONTINUED UPON REQUEST BY PARKER. ALL RIGHTS RESERVED.

PGP511M0230CF1D4NJ7J5B1B1

MATERIAL	ADM CTR P
REV DTE	000000
H.E.-STD:	WT 4.2 Kg

DIMENSIONS ARE <u>MM</u>	
--------------------------	--



DR BY	DATE	CH BY	DATE	SCALE
WS	11APR02	KH	11APR02	1/2

334 9111 482

© 2002 Parker-Hannifin Corporation