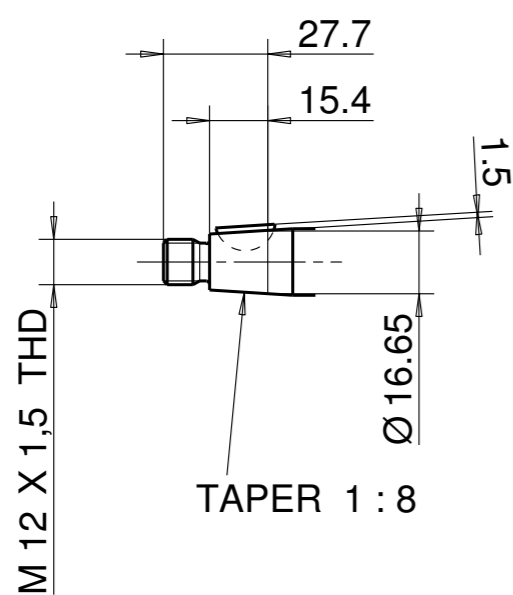
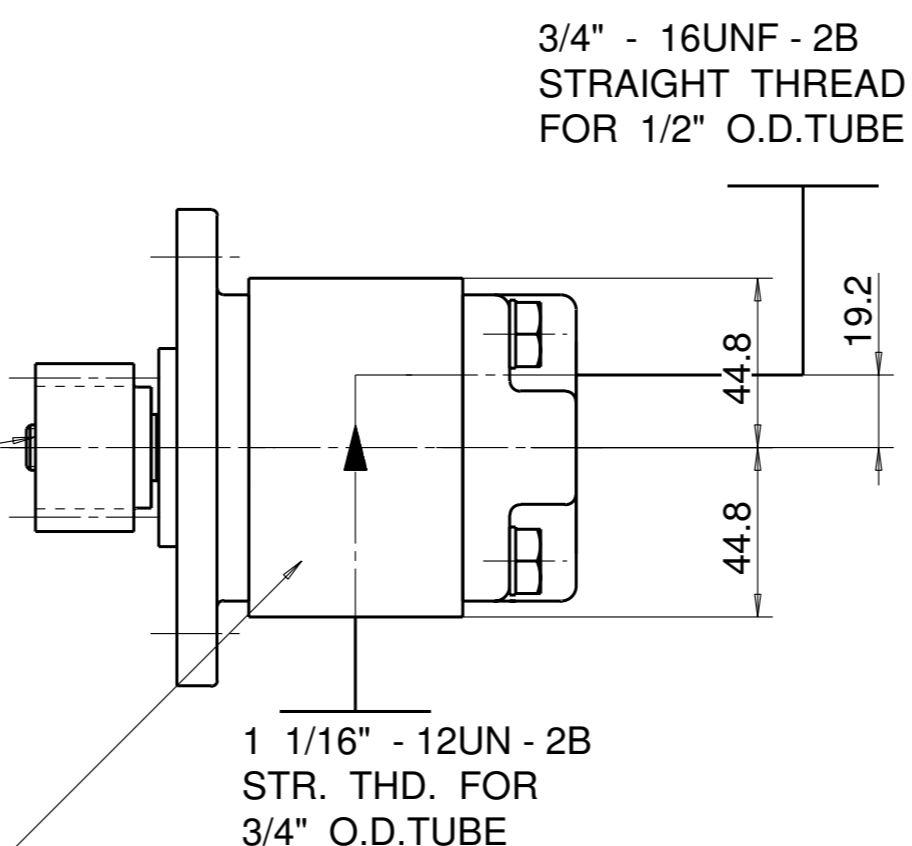


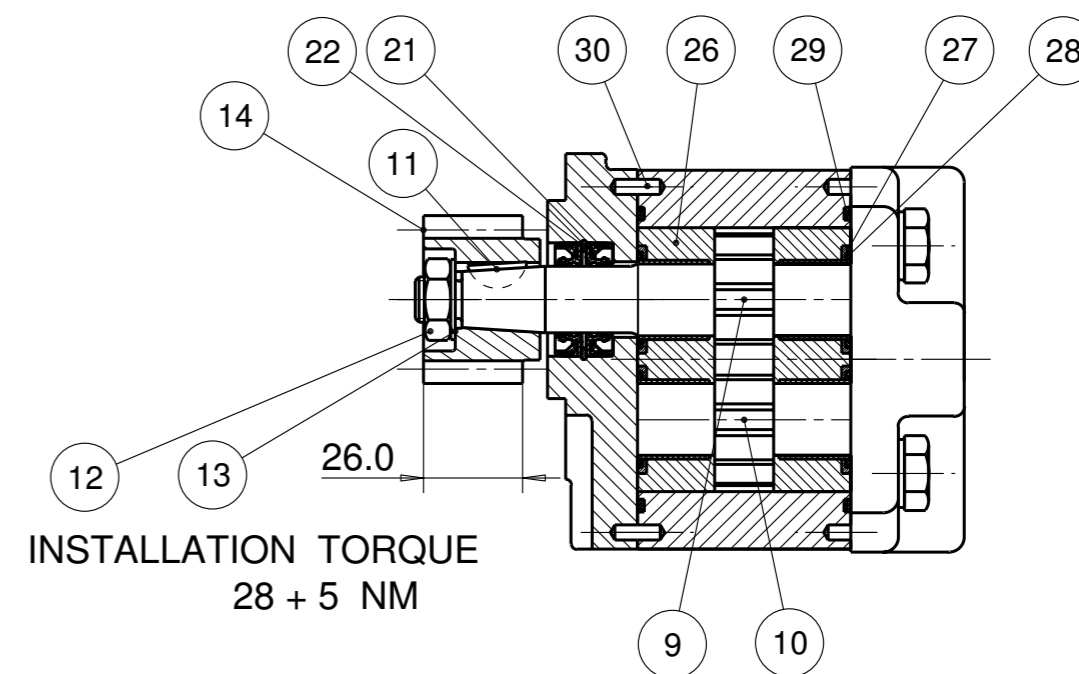
PUMP DATA	
DISPLACEMENT	10,0 ccm
MAX. PRESSURE	240 bar
SPEED RATE	500 TO 3000 min ⁻¹
MAX. INPUT SHAFT TORQUE	198 Nm
ROTATION	ANTI CLOCKWISE



14 TOOTH DRIVE GEAR
44.29 O.D.
36.669 PCD
20° PRESSURE ANGLE
14° 8' RIGTH HAND HELIX

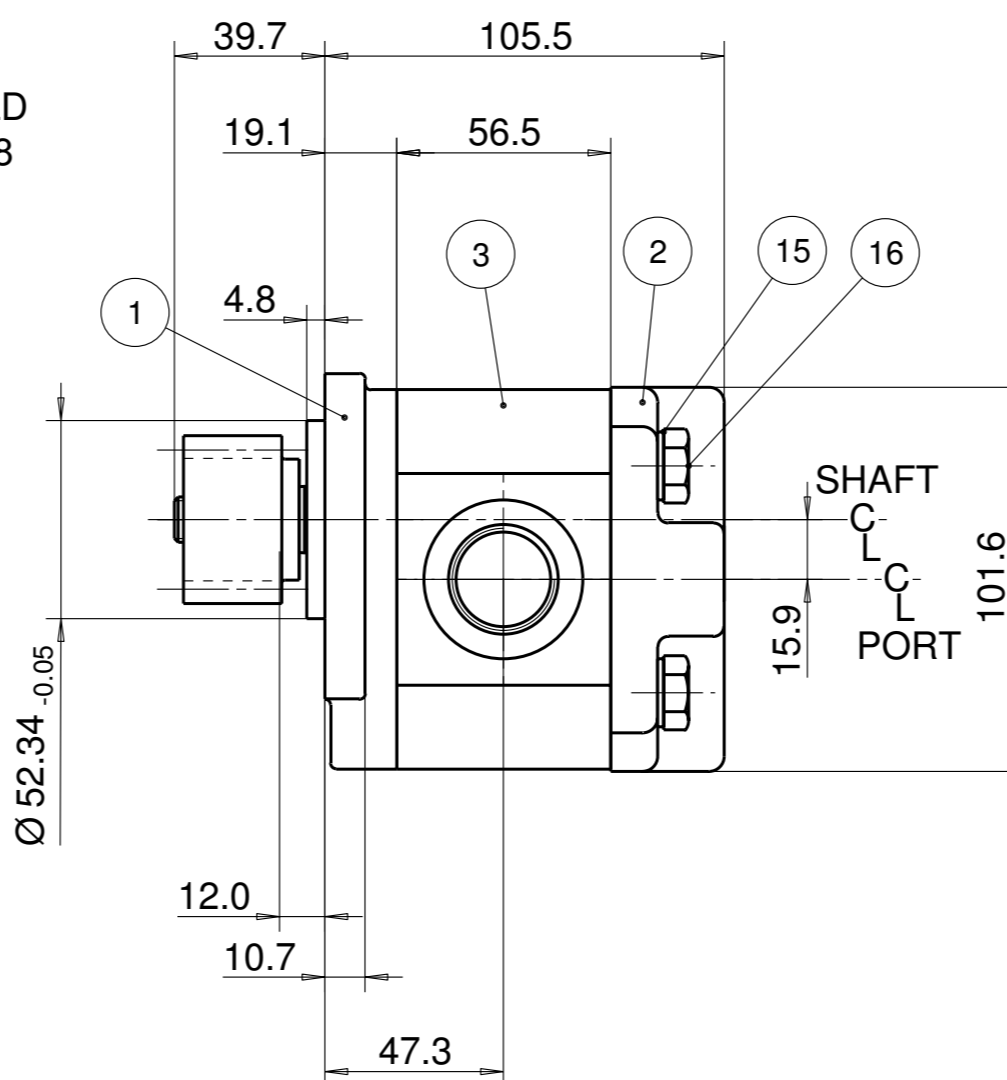
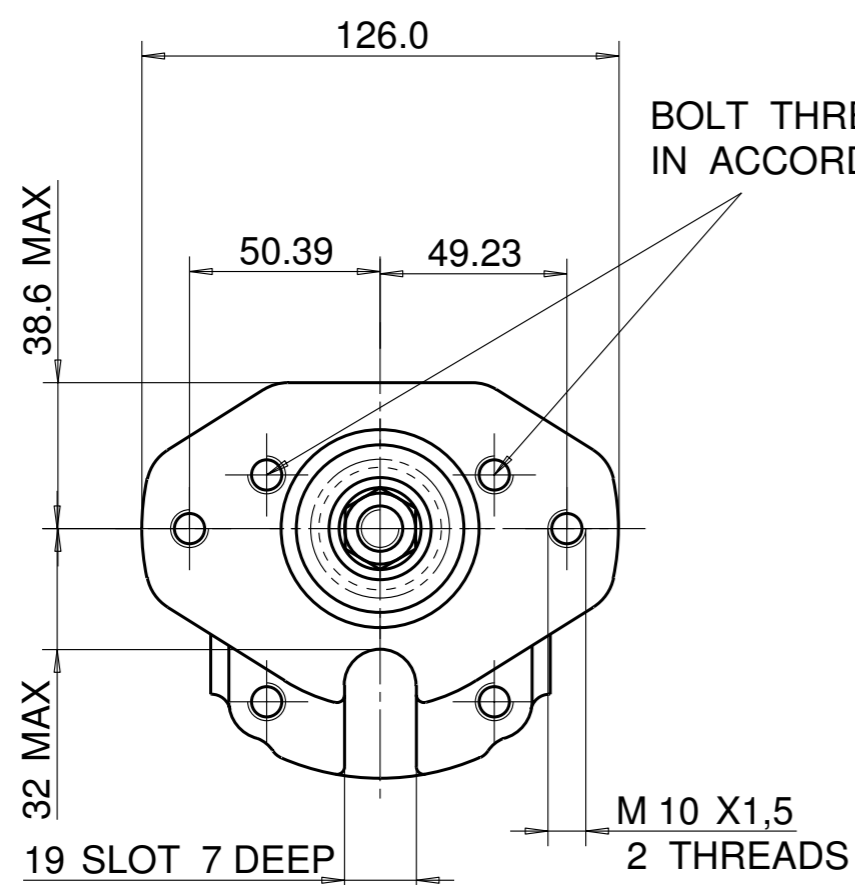


UNIT IDENTIFICATION
(NAMEPLATE)
ON END COVER
OR ON GEAR HOUSING



NOTE

1 FOR ASSEMBLY INSTRUCTIONS SEE DWG. NO. "511-B1" "PGP511 PUMP ASSEMBLY INSTRUCTIONS".



ITEM	PART NO	REQD	DESCRIPTION	ITEM	PART NO	REQD	DESCRIPTION
28	8611-015-000	2	SEAL. BK-UP	36			
27	8611-016-00R	2	SEAL. CHAN.	35			
26	8898-207-00U	2	THRBLK/BSHG	34			
25				33			
24				32			
23				31			
22	9211-323-00B	1	RING, SNAP	30	391 2080 078	2	PIN. DOWEL
21	8301-019-00K	2	SEAL. LIP	29	9313-145-00B	2	SEAL. SECT.

ITEM	PART NO	REQ'D	DESCRIPTION
20			
19			
18			
17			
16	391 1401 542	4	SCREW (85 MM)
15	391 3782 231	4	WASHER
14	4126G-005-004	1	HELICAL GEAR
13	391 3782 307	1	WASHER
12	391 1451 168	1	NUT
11	391 1781 112	1	KEY
10	334 2710 000	1	DRIVEN GEAR
9	334 1810 601	1	DRIVE GEAR
8			
7			
6			
5			
4			
3	334 8610 315	1	HOUSING. GEAR
2	332 3031 303	1	HOUSING. PEC
1	334 5021 219	1	HOUSING. SEC

15NOV06 WS 06-11-939

THIRD ANGLE PROJECTION

EXP NO.	
FIRST USED	06 - 08 - 929
	01534

D1 391 3782 307 WAS 391 3782 309

SYM. REVISIONS 03MAY07 WS 07-05-906

THIS DOCUMENT CONTAINS INFORMATION THAT IS CONFIDENTIAL AND PROPRIETARY TO PARKER-HANNIFIN CORPORATION ("PARKER"). THIS DOCUMENT IS FURNISHED ON THE UNDERSTANDING THAT THE DOCUMENT AND THE INFORMATION IT CONTAINS WILL NOT BE COPIED OR DISCLOSED TO OTHERS OR USED FOR ANY PURPOSE OTHER THAN CONDUCTING BUSINESS WITH PARKER, AND WILL BE RETURNED AND ALL FURTHER USE DISCONTINUED UPON REQUEST BY PARKER. ALL RIGHTS RESERVED.

PGP511A0100AS2J6MD5B1B1D3

MATERIAL	ADM CTR P	
H.E.-STD:	REV DTE 03MAY07	WT 3.6 kg
		DIMENSIONS ARE MM

Parker Pump & Motor Division
Chemnitz

DR. BY DATE WS 22AUG06 CH. BY DATE JS 22AUG06 SCALE 1/2

01534

© 2007 Parker Hannifin Corporation