

HINWEISE UND ANGABEN

Betriebsbedingungen siehe Y 510 201 598

Die Darstellung zeigt eine rechtsdrehende Pumpe (Auf Antriebswelle gesehen). Bei linksdrehender Pumpe ist Druck- und Sauganschluß vertauscht. Die Pumpe darf nur in angegebener Drehrichtung drehen.

Alle Ölanschlüsse für Transport und Lagerung staubdicht verschlossen, z.B. mit Kunststoffstopfen

** Druckeinschränkung bedingt durch Kupplung zwischen Pumpenteil I und II

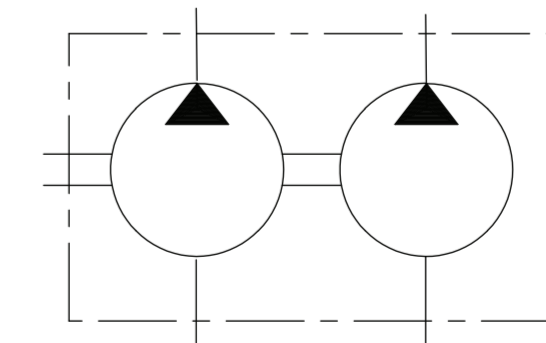
ADDITIONAL INFORMATION

WORKING CONDITIONS SEE Y 510 201 598

CW ROTATION SHOWN. CCW ROTATION PUMPS HAVE PRESSURE AND SUCTION PORT ON OPPOSITE SIDE. PUMP MUST BE DRIVEN IN PROPER DIRECTION ONLY.

ALL OIL PORTS CLOSED PROPERLY AGAINST DUST FOR TRANSPORT AND STORAGE, E.G. WITH PLASTIC CLOSURE CAPS.

** PRESSURE REDUCED DUE TO COUPLING BETWEEN PUMP UNIT I AND PUMP UNIT II



| | | | | | | | | | | | |
|---------------|---------------|---------------------------------|-----------|------|------|------|-----|-------|------|-------|-------|
| B 510 245 272 | 0 510 765 330 | | links/CW | 22.5 | 22.5 | 2500 | 180 | 160** | 55.1 | 167.3 | 225.1 |
| B 510 245 271 | 0 510 765 021 | | rechts/CW | 22.5 | 22.5 | 2500 | 180 | 160** | 55.1 | 167.3 | 225.1 |
| B 510 245 270 | 0 510 765 329 | AZPFF-11-022/019LRR2020KB | links/CW | 22.5 | 19 | 2500 | 180 | 190** | 55.1 | 159.7 | 219.7 |
| B 510 245 269 | 0 510 765 020 | AZPFF-11-022/019RRR2020KB | rechts/CW | 22.5 | 19 | 2500 | 180 | 190** | 55.1 | 159.7 | 219.7 |
| B 510 245 268 | 0 510 765 328 | | links/CW | 22.5 | 16 | 2500 | 180 | 230** | 55.1 | 159.7 | 214.7 |
| B 510 245 267 | 0 510 765 019 | | rechts/CW | 22.5 | 16 | 2500 | 180 | 230** | 55.1 | 159.7 | 214.7 |
| B 510 245 266 | 0 510 765 327 | | links/CW | 22.5 | 14 | 2500 | 180 | 280 | 55.1 | 159.7 | 213.1 |
| B 510 245 265 | 0 510 765 018 | | rechts/CW | 22.5 | 14 | 2500 | 180 | 280 | 55.1 | 159.7 | 213.1 |
| B 510 245 264 | 0 510 765 326 | | links/CW | 22.5 | 11 | 2500 | 180 | 280 | 55.1 | 159.2 | 208.1 |
| B 510 245 263 | 0 510 765 017 | | rechts/CW | 22.5 | 11 | 2500 | 180 | 280 | 55.1 | 159.2 | 208.1 |
| B 510 245 262 | 0 510 765 325 | | links/CW | 22.5 | 8 | 2500 | 180 | 280 | 55.1 | 155.3 | 201.3 |
| B 510 245 261 | 0 510 765 016 | AZPFF-10-022/008RRR2020KB | rechts/CW | 22.5 | 8 | 2500 | 180 | 280 | 55.1 | 155.3 | 201.3 |
| B 510 245 260 | 0 510 765 324 | | links/CW | 22.5 | 5.5 | 2500 | 180 | 280 | 55.1 | 153.3 | 197.2 |
| B 510 245 259 | 0 510 765 015 | | rechts/CW | 22.5 | 5.5 | 2500 | 180 | 280 | 55.1 | 153.3 | 197.2 |
| B 510 245 258 | 0 510 765 323 | | links/CW | 22.5 | 4 | 2500 | 180 | 280 | 55.1 | 152.0 | 194.7 |
| B 510 245 257 | 0 510 765 014 | | rechts/CW | 22.5 | 4 | 2500 | 180 | 280 | 55.1 | 152.0 | 194.7 |
| B 510 F45 229 | 0 510 665 132 | AZPFF-10-019/019RRR2020KB | rechts/CW | 19 | 19 | 3000 | 230 | 210** | 47.5 | 154.2 | 214.4 |
| B 510 245 256 | 0 510 665 363 | | links/CW | 19 | 19 | 3000 | 230 | 210** | 47.5 | 154.2 | 214.4 |
| B 510 245 255 | 0 510 665 051 | | rechts/CW | 19 | 19 | 3000 | 230 | 210** | 47.5 | 154.2 | 214.4 |
| B 510 245 254 | 0 510 665 362 | | links/CW | 19 | 16 | 3000 | 230 | 230** | 47.5 | 154.2 | 209.4 |
| B 510 245 253 | 0 510 665 050 | | rechts/CW | 19 | 16 | 3000 | 230 | 230** | 47.5 | 154.2 | 209.4 |
| B 510 245 252 | 0 510 665 361 | | links/CW | 19 | 14 | 3000 | 230 | 280 | 47.5 | 154.2 | 206 |
| B 510 245 251 | 0 510 665 049 | | rechts/CW | 19 | 14 | 3000 | 230 | 280 | 47.5 | 154.2 | 206 |
| B 510 H45 221 | 0 510 665 516 | AZPFF-12-019/011LRR2020MB | links/CW | 19 | 11 | 3000 | 230 | 280 | 47.5 | 153.7 | 201 |
| B 510 F45 210 | 0 510 665 435 | AZPFF-10-019/011LRR2020KB | links/CW | 19 | 11 | 3000 | 230 | 280 | 47.5 | 153.7 | 201 |
| B 510 245 250 | 0 510 665 360 | | links/CW | 19 | 11 | 3000 | 230 | 280 | 47.5 | 153.7 | 201 |
| B 510 245 249 | 0 510 665 048 | | rechts/CW | 19 | 11 | 3000 | 230 | 280 | 47.5 | 153.7 | 201 |
| B 510 F45 209 | 0 510 665 126 | AZPFF-10-019/008RRR2020KB | rechts/CW | 19 | 8 | 3000 | 230 | 280 | 47.5 | 149.9 | 196 |
| B 510 245 248 | 0 510 665 359 | | links/CW | 19 | 8 | 3000 | 230 | 280 | 47.5 | 149.9 | 196 |
| B 510 245 247 | 0 510 665 047 | AZPFF-10-019/008RRR2020MB | rechts/CW | 19 | 8 | 3000 | 230 | 280 | 47.5 | 149.9 | 196 |
| B 510 245 246 | 0 510 665 358 | | links/CW | 19 | 5.5 | 3000 | 230 | 280 | 47.5 | 149.9 | 191.9 |
| B 510 245 245 | 0 510 665 046 | | rechts/CW | 19 | 5.5 | 3000 | 230 | 280 | 47.5 | 147.8 | 191.9 |
| B 510 245 244 | 0 510 665 357 | | links/CW | 19 | 4 | 3000 | 230 | 280 | 47.5 | 146.6 | 189.4 |
| B 510 245 243 | 0 510 665 045 | | rechts/CW | 19 | 4 | 3000 | 230 | 280 | 47.5 | 146.6 | 189.4 |
| B 510 245 242 | 0 510 665 356 | AZPFF-10-016/016LRR2020MB | links/CW | 16 | 16 | 3000 | 280 | 230** | 47.5 | 149.2 | 204.4 |
| B 510 245 241 | 0 510 665 044 | | rechts/CW | 16 | 16 | 3000 | 280 | 230** | 47.5 | 149.2 | 204.4 |
| B 510 245 240 | 0 510 665 355 | | links/CW | 16 | 14 | 3000 | 280 | 280 | 47.5 | 149.2 | 201 |
| B 510 245 239 | 0 510 665 043 | | rechts/CW | 16 | 14 | 3000 | 280 | 280 | 47.5 | 149.2 | 201 |
| B 510 245 191 | 0 510 665 354 | AZPFF-12-016/014RRR2020PB-Sxxxx | rechts/CW | 16 | 14 | 3000 | 280 | 280 | 47.5 | 149.2 | 201 |
| B 510 245 238 | 0 510 665 354 | AZPFF-10-016/011LRR2020MB | links/CW | 16 | 11 | 3000 | 280 | 280 | 47.5 | 148.7 | 196 |
| B 510 245 237 | 0 510 665 042 | | rechts/CW | 16 | 11 | 3000 | 280 | 280 | 47.5 | 148.7 | 196 |
| B 510 245 236 | 0 510 665 353 | | links/CW | 16 | 8 | 3000 | 280 | 280 | 47.5 | 144.9 | 191 |
| B 510 245 235 | 0 510 665 041 | | rechts/CW | 16 | 8 | 3000 | 280 | 280 | 47.5 | 144.9 | 191 |
| B 510 245 234 | 0 510 665 352 | | links/CW | 16 | 5.5 | 3000 | 280 | 280 | 47.5 | 142.8 | 186.9 |
| B 510 245 233 | 0 510 665 040 | | rechts/CW | 16 | 5.5 | 3000 | 280 | 280 | 47.5 | 142.8 | 186.9 |
| B 510 245 232 | 0 510 665 351 | | links/CW | 16 | 4 | 3000 | 280 | 280 | 47.5 | 141.6 | 184.4 |
| B 510 245 231 | 0 510 665 039 | | rechts/CW | 16 | 4 | 3000 | 280 | 280 | 47.5 | 141.6 | 184.4 |

| Entwurfs-Zeichnungs-Nr. | Bestell-Nr. | Typ-Aufschrift | Dreh-richtung | PI Fördervolumen [cm³ / U] | PII Drehzahl [U/min] | max. max. Druck (intermitt.) [bar] | PI max. Druck (intermitt.) [bar] | PII max. Druck (intermitt.) [bar] | A Maß [mm] | B Maß [mm] | C Maß [mm] | Bemerkung |
|-------------------------|-------------|----------------|------------------|----------------------------------|----------------------------|---|---|--|------------------|------------------|------------------|-----------|
| DRAWING | PART NUMBER | DESIGNATION | DIR. OF ROTATION | DISPLACEMENT [cm³ / rev] | MAX. SPEED | MAX. PRESSURE | | | DIMENSIONS | | | REMARKS |

general tolerances for Allgemeintoleranzen fuer
(in dim./L. masse radII/Radian angles/Winkel)

| | | |
|------|----|-----|
| ±0.3 | -- | ±1° |
|------|----|-----|

all linear dimensions in/
Alle Längengrößen in mm

drawing standard/
Zeichnungsstandard ISO Standard

A-document/
A-Dokument RA50766240

| | | | | | | |
|-------------------------------|----------|------------|---------------|--|------------------------|--------------------------------|
| AU -- | 20140717 | ako/for | rk/3kor | len/2st/12/2014 | 7930 DC-MA/EPE | 51 MAEPE 0B33 |
| AA -- | 19910701 | MG | | | 7930 DC-MA/EPE | Erstellt |
| Ind./Change/Änd. | YYYYMMDD | Drawn/Gez. | Checked/Prüf. | Released/Reig. | BWN | Resp. dept./Verantw. Abt. |
| Lang./Spr. | Syst. | Wght./Gew. | Scale/Verst. | 1:2 | Rexroth Bosch Group | |
| EN/DE | PE | 1:2 | 1:2 | HYDRAULIC GEAR PUMP AZPFF HYDROZAHNRADPUMPE | | |
| OFFER DRAWING ANGEBOTSZEICHN. | | | | | | Doc. type AGZ A 510 245 231 |
| MNR | | | | | | Sheet/Bl. 1/1 |
| Repl. for | | | | | | Formal A1 |
| Repl. by | | | | | | BP/10 001 AU |

© Alle Rechte bei Bosch Rexroth AG, auch für den Fall von Schutzrechtsverletzungen. Jede Weitergabe, wie Kopieren- und Weitergeben, ist ohne schriftliche Genehmigung von Bosch Rexroth AG. This document is the property of Bosch Rexroth AG. It may not be reproduced or given to third parties without its consent.