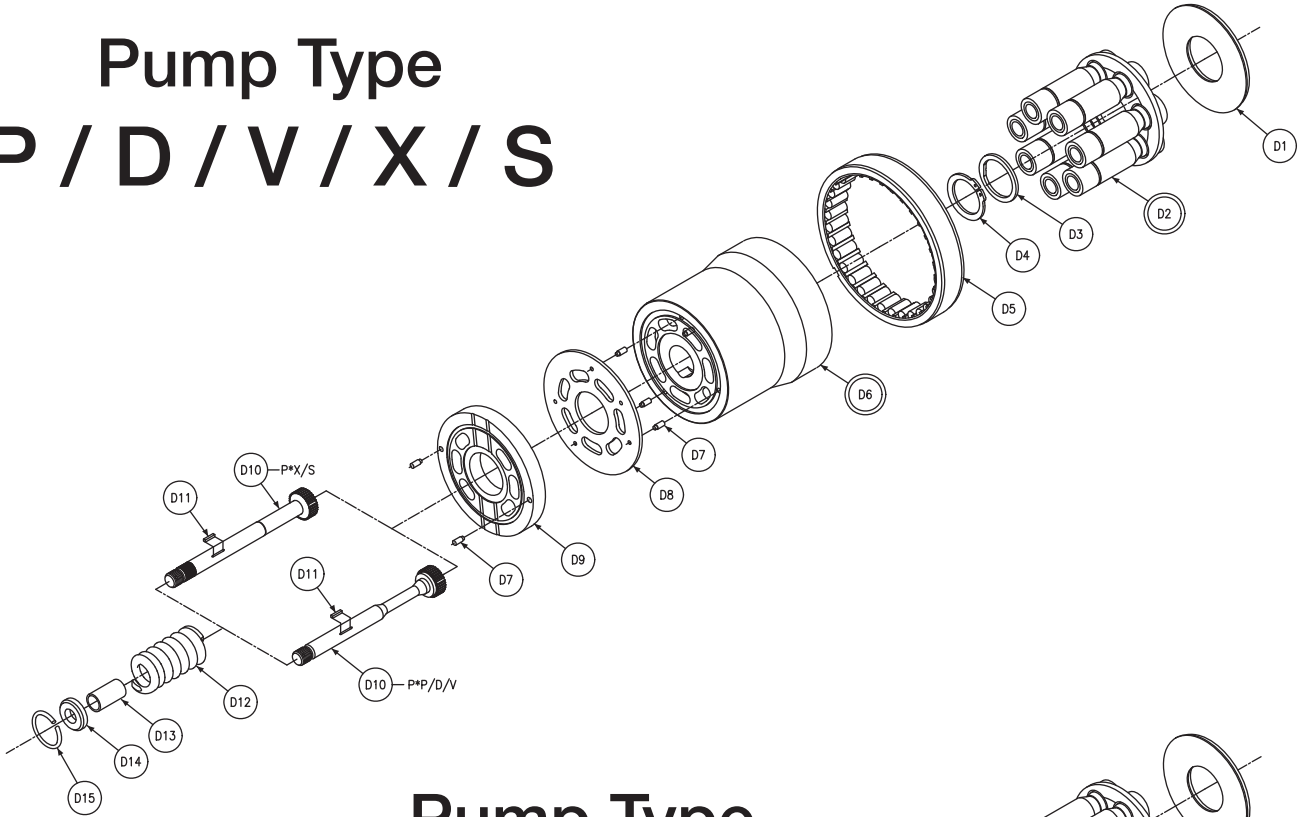
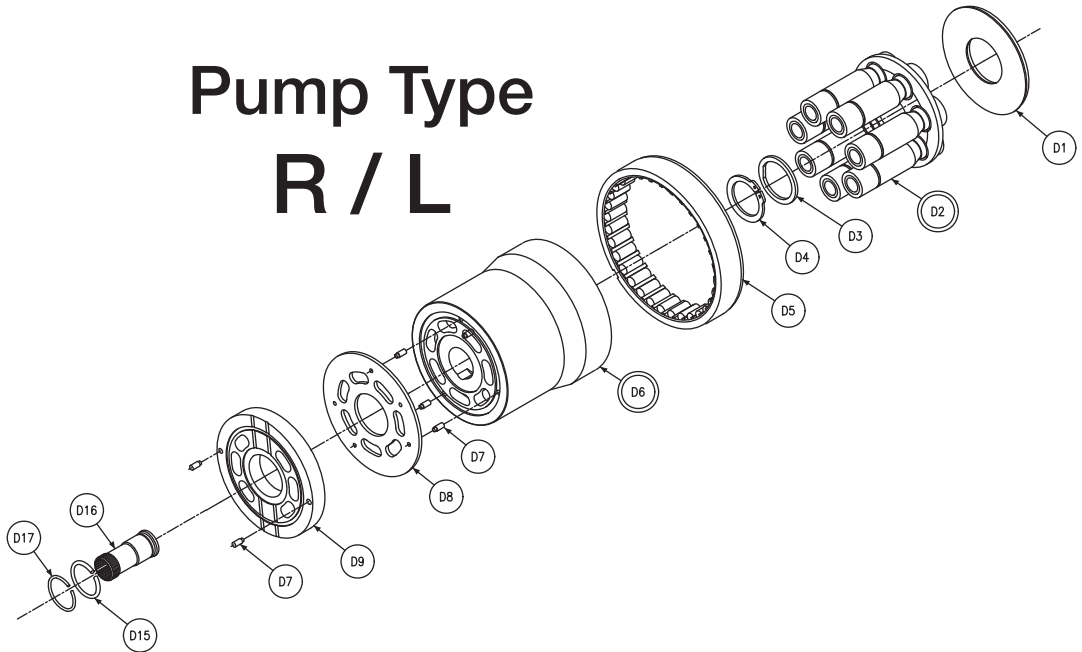


Pump Type P / D / V / X / S



Pump Type R / L



Section View - D - Rotating Group Assembly

Section D						
P6/7/8 Rotating Group						
Balloon#	Displacement	Pump Type	Rotation	Item #	Description	Qty
D1	**	P/D/V/X/S/R/L	**	033-71261-0	Creep Plate	1
D2	P6	P/D/X/S/R/L	**	S13-43655-0	Piston Shoe & Retainer Assembly	1
	P7	P/D/X/S/R/L	**	S13-42308-0		
	P8	P/D/X/S/R/L	**	S21-11650-0		
	P6	V	**	S13-45375-0		
	P7	V	**	S13-47873-0		
D3	**	P/D/V/X/S/R/L	**	033-72249-0	Thrust Washer	1
	**	P/D/V/X/S/R/L	**	033-70484-0	Ret. Ring - .077" (1,96mm) Thk - Black	1
**	P/D/V/X/S/R/L	**	033-70488-0	Ret. Ring - .079" (2,01mm) Thk - Red		
D4	**	P/D/V/X/S/R/L	**	033-70490-0	Ret. Ring - .081" (2,06mm) Thk - Green	
	**	P/D/V/X/S/R/L	**	035-72175-0	Ret. Ring - .083" (2,11mm) Thk - Yellow	
	**	P/D/V/X/S/R/L	**	035-72176-0	Ret. Ring - .085" (2,16mm) Thk - Blue	
D5	**	P/D/V/X/S/R/L	**	033-54826-0	Ret. Ring - .087" (2,21mm) Thk - White	1
	**	P/D/V/X/S/R/L	**	033-91107-0	Barrel Bearing	
D6	P6	P/D/V/X/S/R/L	**	S13-43657-0	Cylinder Barrel	1
	P7	P/D/V/X/S/R/L	**	S13-47511-0		
	P8	P/D/V/X/S/R/L	**	S23-12718-0		
D7	P6/7/8	P/D/V/X/S/R/L	**	033-49825-0	Face Plate Pin	5
D8	P6	P/D/V/X/S/R/L	**	033-71530-0	Face Plate	1
	P7/8	P/D/V/X/S/R/L	**	033-72532-0		
D9	P6	P/D/X/S/R/L	CW	033-71526-0	Port Plate	1
	P6	P/D/X/S/R/L	CCW	033-71525-0		
	P7	P/D/X/S/R/L	CW	033-72811-0		
	P7	P/D/X/S/R/L	CCW	033-53776-0		
	P8	P/D/X/S/R/L	CW	033-91252-0		
	P8	P/D/X/S/R/L	CCW	033-91553-0		
	P6	V	CW	031-59368-0		
	P6	V	CCW	031-59333-0		
	P7	V	CW	031-54509-0		
	P7	V	CCW	031-54508-0		
D10	**	P/D/V	**	033-53956-0	Auxiliary shaft	1
	**	S/X	**	033-91050-0		
D11	**	P/D/V/X/S	**	211-22034-0	Square Key	1
D12	**	P/D/V/X/S	**	033-70493-0	Holddown Spring	1
D13	**	P/D/V/X/S	**	033-53944-0	Holddown Stop	1
D14	**	P/D/V/X/S	**	033-53945-0	Spring Retainer	1
D15	**	P/D/V/X/S/R/L	**	033-70494-0	Retaining Ring	1
D16	**	R/L	**	033-57397-0	Holddown Sleeve	1
D17	**	R/L	**	033-57402-0	Retaining Ring	1

Major Rotating Group Kits			
Composed of Items: D1,D2,D5,D6,D7, D8 and D9			
Displacement	Pump Type	Rotation	Part Number
P6	P/D/X/S/R/L	CW	S23-17087-0
P6	P/D/X/S/R/L	CCW	S23-17088-0
P6	V	CW	S23-17093-0
P6	V	CCW	S23-17094-0
P7	P/D/X/S/R/L	CW	S23-17089-0
P7	P/D/X/S/R/L	CCW	S23-17090-0
P7	V	CW	S23-17095-0
P7	V	CCW	S23-17096-0
P8	P/D/X/S/R/L	CW	S23-17091-0
P8	P/D/X/S/R/L	CCW	S23-17092-0
P8	V	CW	S23-17097-0
P8	V	CCW	S23-17098-0

Barrel Hold Down Kits			
Composed of Items:			
D10,D12,D13,D14 and D15 For P/D/V/X/S			
No Kit Available for R/L Versions			
Displacement	Model Type	Rotation	Part Number
P6/7/8	P/D/V	**	S23-17246-0
P6/7/8	X/S	**	S23-17247-0

