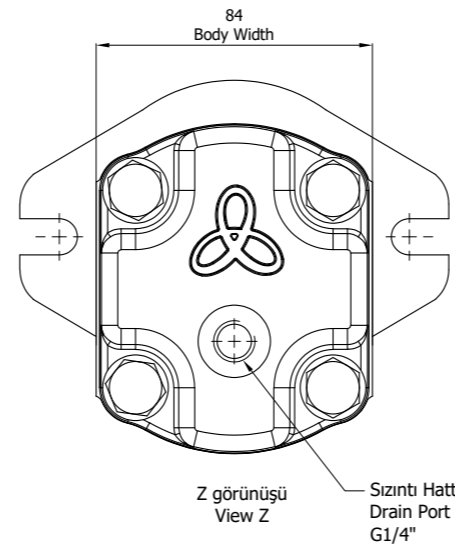
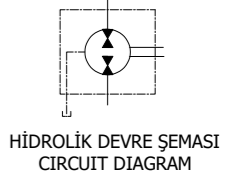
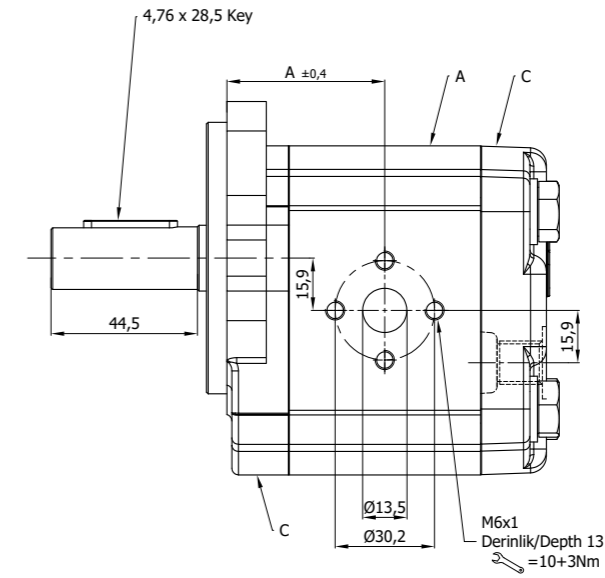
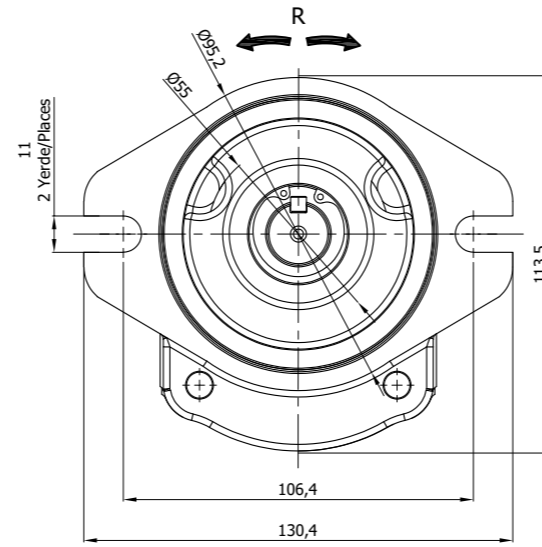
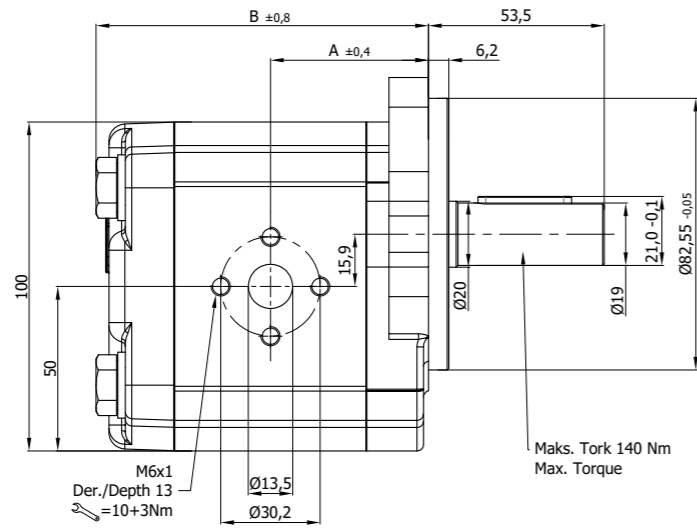


RESİM ÜZERİNDEN ÖLÇÜ ALMAYINIZ
DO NOT SCALE



Malzeme / Material	
A	Aluminium Alloy
C	Cast Iron

Motor Özellikleri / Motor Data			
Maks. Emiş Basıncı (bar) Max. Suction Pressure (bar)		0,25	
Keçe Tipi / Seals Type		NBR	VITON
Min. Sıcaklık (°C) Min. Temperature (°C)	Sürekli / Continuous	0°	0°
	Aralıklı / Intermittent	-20°	-20°
Maks. Sıcaklık (°C) Max. Temperature (°C)	Sürekli / Continuous	+80°	+100°
	Aralıklı / Intermittent	+100°	+120°
Kirlilik Sınıfı Contamination Class		20/18/15 ISO 4406	
Test Şartnamesi Test Specification		R1062	
Yağ / Oil		ISO/DIN Standartlarına Göre Mineral Esaslı Hidrolik Yağlar Mineral Oil Based Hydraulics Fluids According to ISO/DIN	
Viskozite/Viscosity		20 / 120 cSt	
Başlangıç Viskozite Start-up Viscosity		1500 cSt	

6030212000953	APM20.115.RDH102EGN-001	Çift Dönüş(R)/Reversible	11,4	250	280	300	600 min./3000 max.	48,1	101,0	NBR
Motor Kodu Motor Code	Motor Tipi Motor Type	Dönüş Yönü Rotation	İletim Hacmi Displacement cm³/dev(cm³/rev)	Sürekli Çalışma Basıncı Continuous Pressure (bar)	Aralıklı Çalışma Basıncı Intermittent Pressure (bar)	Ani Basıncı Peak Pressure (bar)	Hız (d/d) Speed (rpm)	A ±0,4	B ±0,8	Keçe Tipi Seals Type

CAD DRAW		MALZEME MATERIAL	
Bu resim ASC' nin izni alınmadan çoğaltılamaz. Aslı ve kopyaları üçüncü şahıslara devredilemez. All proprietary rights reserved by ASC. This drawing shall not be reproduced, or in any way utilized, for the manufacture of the component or unit herein illustrated and must not be released to other parties, without written consent. Any infringement will be legally pursued.		PARÇA ADI: Motor Montajı PART NAME: Motor Assembly	
TOLERANSLAR/TOLERANCES (AKSI BELİRTİLMEDİKÇE) (UNLESS OTHERWISE STATED)		ÇİZEN/DRAWN ALİ KEÇİCİ KONTROL/CHECKED HÜSEYİN UYAR ONAY/APPROVED FATİH BOZTAŞ TARİH/DATE 14.10.2021	
P Prototip için yayımlandı F.B. 14.10.2021		ÇİZİM NO: / DRAWING NO: 1/1	
DEĞ. NO: REV. E. C. NO: DEĞİŞİKLİK CHANGED KONTROL CHECKED TARİH DATE		APM20.115.RDH102EGN-001 A1	

