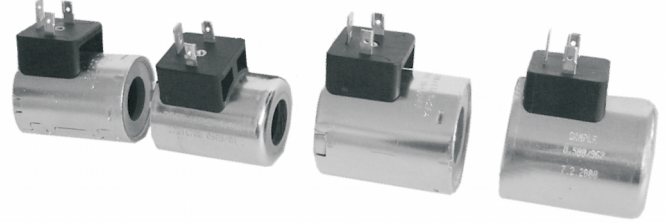


- Various designs regarding sizes and types
- Large selection of AC / DC voltages



Ordering Code

C	□	□	-	□	□	□	-	□	□	□	/	M	X
Electromagnet coil													
Coil design (Size - according to the inner diameter)													
∅ 13,4 mm	14												
∅ 19,0 mm	19												
∅ 19,0 mm	20												
∅ 22,0 mm	22												
∅ 31,0 mm	31												
Coil housing design version													
Scrolled housing	A												
Drawn housing	B												
Long drawn housing	C												
Pressed part	D												
Rated voltage of solenoid (at the coil terminals)													
12 V DC	01200												
14 V DC	01400												
24 V DC	02400												
27 V DC	02700												
48 V DC	04800												
106 V DC	10600												
205 V DC	20500												
115 V 50 Hz	11050												
120 V 60 Hz	12060												
230 V 50 Hz	23050												
Type of solenoid coil see the page 18													
E..													
Conductor design													
Non-braided	N												
Braided	B												
* For loose conductors only													
Special design													
Insulation design													
No designation													
Standard													
H													
Version CSA													
Surface treatment													
A													
B													
ZnCr ₃													
Zn/Ni													
Detent type*													
N													
F													
Without detent													
With detent													
*C31 coils only													
Resistance													
...													
Coil resistance (Ω)													
See the table of preferred coils													
Length of conductors													
300													
...													
Standard (300 mm)													
according to customer's requirements													
* For loose conductors only													

Dimensions of Coils C19

Dimensions in millimeters (inches)

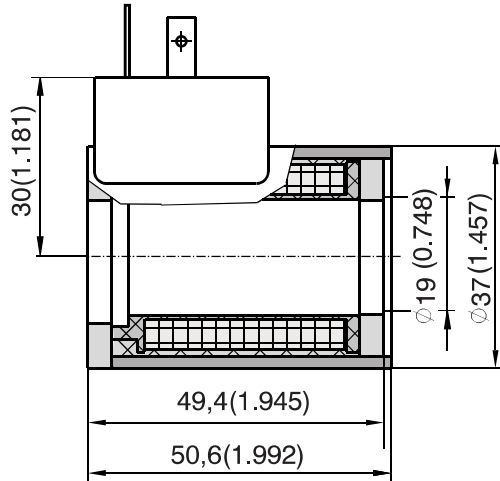
Design version - A

Connector design

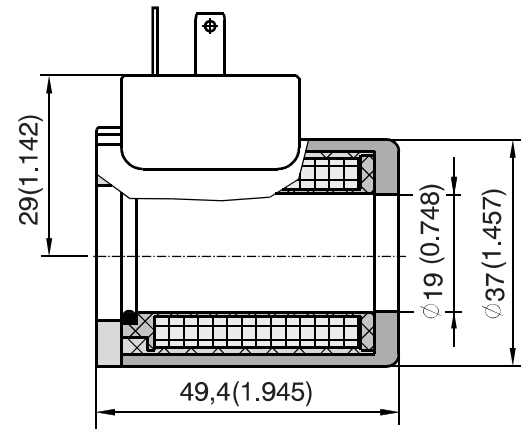
E1 (Connector EN 175301-803-A)

E2 (E1 with quenching diode)

Protection degree IP65



Design version - B



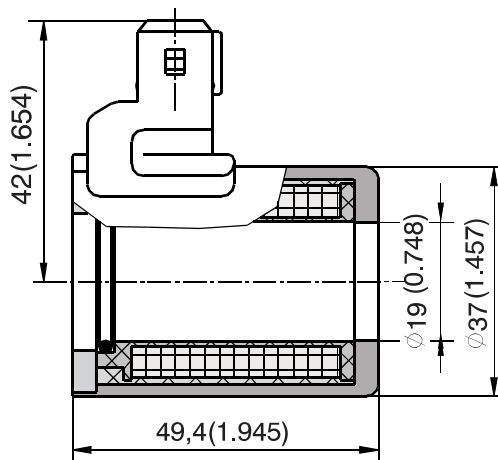
Design version - B

Connector design

E3 (Connector AMP-Junior-Timer - (2-pins; male)

E4 (E3 with quenching diode)

Protection degree IP67



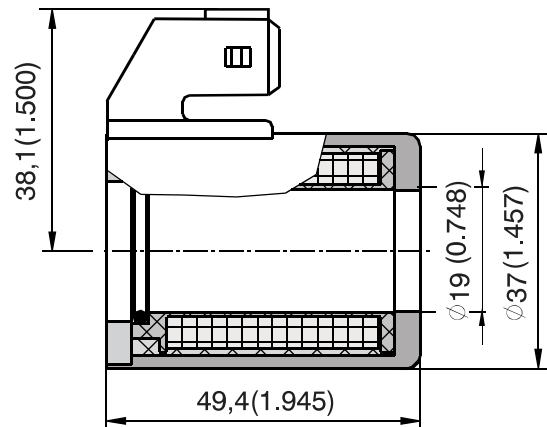
Design version - B

Connector design

E3A (Connector AMP-Junior-Timer - (2-pins; male)

E4A (E3A with quenching diode)

Protection degree IP67



Dimension of Coils C31

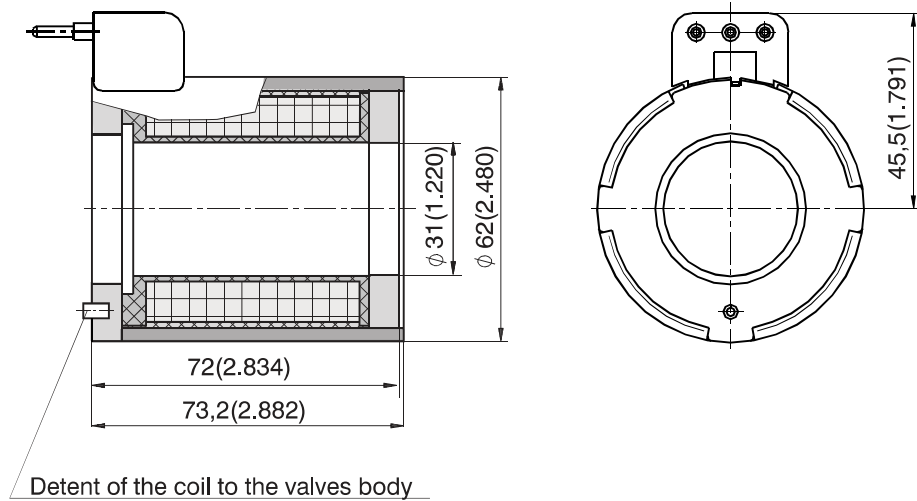
Dimensions in millimeters (inches)

Design version - A

Connector design

EW1 - (Wirebox)

Protection degree IP65



Identification and Survey of the Offered Connectors

Connector	Connector description
E1	Connector EN 175301-803-A
E2	Connector E1 with quenching diode
E3	Connector AMP Junior Timer (2 pins; male)
E4	Connector E3 with quenching diode
E3A	Axial connector AMP Junior Timer (2 pins; male)
E4A	Connector E3A with quenching diode
E5	Connector EN 175301-803-A with integrated rectifier
E51	Connector EN 175301-803-A with integrated recrifier and fast deconnection
E6	Connector Kostal
E7	Connector E6 with quenching diode
E8	Loose conductors (two insulated cables)
E9	E8 with quenching diode
E10	Loose conductors and Deutsch connector DT04-2P (2 pins; male)
E11	E10 witch quenching diode
E12	Connector Deutsch DT04-2P (2 pins; male)
E13	Connector E12 with quenching diode
E14	Connector Spade
E15	Connector E14 with quenching diode
E16	Loose conductors and Metri-Pack connector Series 150 (2 pins; male)
E17	Connector E16 with quenching diode
E18	Loose conductors and Weather-Pack onnector (2 pins; male)
E19	Connector E18 with quenching diode
E20	Loose conductors and Weather-Pack connector (2 pins; male)
E21	Connector E20 with quenching diode
E22	Loose conductors and Econoseal connector (2 pins; male)
E23	Connector E22 with quenching diode
E24	Loose conductors and AMP Junior Timer (2 pins; male)
E25	Connector E24 with quenching diode
EW1	Konektor for Wirebox
EW2	Connector EW1 with quenching diode
EW5	Connector for Wirebox (AC coil)

Coils C19

Valve type	Voltage [V]	Current [A]	Type of solenoid coil					
			E1	E2	E3	E4	E3A	E4A
RPE3-04 ROE3-04 ROE3-06 SR4E-B2	01200	2,45	27316600 C19B-01200E1-4,98NA	27631400 C19B-01200E2-4,98NA	27330200 C19B-01200E3-4,98NA	27631600 C19B-01200E4-4,98NA	27449600 C19B-01200E3A-4,98NA	27631900 C19B-01200E4A-4,98NA
	01400	1,66	27634100 C19B-01400E1-8,23NA	27634200 C19B-01400E2-8,23NA	27634300 C19B-01400E3-8,23NA	27634400 C19B-01400E4-8,23NA	27634500 C19B-01400E3A-8,23NA	27634600 C19B-01400E4A-8,23NA
	02400	1,15	27316700 C19B-02400E1-20,8NA	27632400 C19B-02400E2-20,8NA	27330300 C19B-02400E3-20,8NA	27633200 C19B-02400E4-20,8NA	27449700 C19B-02400E3A-20,8NA	27633400 C19B-02400E4A-20,8NA
	02700	0,89	27636100 C19B-02700E1-30,4NA	27639400 C19B-02700E2-30,4NA	27641600 C19B-02700E3-30,4NA	27641700 C19B-02700E4-30,4NA	27641800 C19B-02700E3A-30,4NA	27642100 C19B-02700E4A-30,4NA
	04800	0,56	27825500 C19B-04800E1-86,9NA	---	---	---	---	---
	10600*	0,22	27642600 C19B-10600E1-494NA	---	---	---	---	---
	20500**	0,12	27382401 C19B-20500E1-1653NA	---	---	---	---	---
	12060	0,22	---	---	---	---	---	---
	23050	0,12	---	---	---	---	---	---
	01200 CSA	2,41	24140700 C19A-01200E1-4,98NAH	---	---	---	---	---
	02400 CSA	1,15	24140800 C19A-02400E1-21NAH	---	---	---	---	---
	115500 CSA	0,24	---	---	---	---	---	---
	23000 CSA	0,14	---	---	---	---	---	---
	SD2E-A2/H SD2E-A3/H SD2E-A4/H SD3E-A2/H	01200	1,7	27666300 C19B-01200E1-7,1NA	27666700 C19B-01200E2-7,1NA	27667000 C19B-01200E3-7,1NA	27667100 C19B-01200E4-7,1NA	---
01400		1,46	27823600 C19B-01400E1-9,6NA	---	---	---	---	
02400		0,83	27667700 C19B-02400E1-28,8NA	27667800 C19B-02400E2-28,8NA	27667900 C19B-02400E3-28,8NA	27668000 C19B-02400E4-28,8NA	---	
10600*		0,2	27668400 C19B-10600E1-527NA	---	---	---	---	
20500**		0,1	27668700 C19B-20500E1-2065NA	---	---	---	---	
12060		0,21	---	---	---	---	---	
23050		0,11	---	---	---	---	---	