



axial piston pump variable displacement high pressure version

size and displacement

rotation

variation

mounting interface

threads code

thru drive code

coupling code

seals

compensator

see next page →

Code	Displacement	Size
270	270 cm <sup>3</sup> /rev	5

Code	Rotation <sup>1)</sup>
R	Clockwise
L	Counter clockwise

<sup>1)</sup> When looked on shaft

Code	Variation
1	Standard
2	Electronic displacement sensor <sup>2)</sup>
9	Special adjustment <sup>3)</sup>

<sup>2)</sup> not for horse power control

<sup>3)</sup> requires Kxxxx number

Code	Mounting interface	Shaft
K	metr. ISO 4-hole flange Ø200 mm	Cylindric, key
L	3019/2 4-hole flange Ø200 mm	Splined, DIN 5480
D	SAE ISO 4-hole flange SAE E	Cylindric, key
E	3019/1 4-hole flange SAE E	Splined, SAE

Code	Port <sup>4)</sup>	Threads <sup>5)</sup>
1	BSPP	metric
3	UNF	UNC
7	ISO 6149	UNC
8	ISO 6149	metric

<sup>4)</sup> Drain, gage and flushing ports

<sup>5)</sup> All mounting and connecting threads

Code	Seals	Shaft seal
N	NBR	FKM
V	FKM	FKM
W	NBR	PTFE
P	FKM	PTFE
B	NBR	NBR

Code	Coupling for thru drive	as single part <sup>6)</sup>
1	Single pump, no coupling	
H	with coupling 25 x 1.5 x 15, DIN 5480	MK-PVBG5K01
J	with coupling 32 x 1.5 x 20, DIN 5480	MK-PVBG5K02
K	with coupling 40 x 1.5 x 25, DIN 5480	MK-PVBG5K03
L	with coupling 50 x 2 x 24, DIN 5480	MK-PVBG5K04
M	with coupling 60 x 2 x 28, DIN 5480	MK-PVBG5K05
Y	with coupling SAE A 9T-16/32 DP	MK-PVBG5K11
A	with coupling SAE - 11T-16/32 DP	MK-PVBG5K12
B	with coupling SAE B 13T-16/32 DP	MK-PVBG5K13
C	with coupling SAE B-B 15T-16/32 DP	MK-PVBG5K14
D	with coupling SAE C 14T-12/24 DP	MK-PVBG5K15
E	with coupling SAE C-C 17T-12/24 DP	MK-PVBG5K16
F	with coupling SAE D, E 13T-8/16 DP	MK-PVBG5K17
G	with coupling SAE F 15T-8/16 DP	MK-PVBG5K18

Code	Thru drive option	
	No adaptor for 2nd pump	
T	Single pump prepared for thru drive	
	with adaptor for 2nd pump as single part <sup>6)</sup>	
A	SAE A, Ø 82.55 mm	MK-PVBG5Axx
B	SAE B, Ø 101.6 mm	MK-PVBG5Bxx
C	SAE C, Ø 127 mm	MK-PVBG5Cxx
D	SAE D, Ø 152.4 mm	MK-PVBG5Dxx
E	SAE E, Ø 165.1 mm	MK-PVBG5Exx
H	metric, Ø 80 mm	MK-PVBG5Hxx
J	metric, Ø 100 mm	MK-PVBG5Jxx
K	metric, Ø 125 mm	MK-PVBG5Kxx
L	metric, Ø 160 mm	MK-PVBG5Lxx
M	metric, Ø 200 mm	MK-PVBG5Mxx

See dimensions for details

<sup>6)</sup> to be ordered separately as single part see page 61.

Standard pump is not painted. Black painted pump and ATEX certification (Zone 2) is available as special option. For additional informations please contact Parker Hannifin.

Code		Control options
0	0	1 No control
1	0	0 With cover plate, no control function (fixed displacement pump)
M	M	Standard pressure control, integrated pilot valve
M	R	Remote pressure control, integrated pilot valve
M	F	Load Sensing (flow) control, integrated pilot valve
M	T	Two spool LS control
Control variation		
		C Standard version <sup>1)</sup>
		1 NG6 interface top side for pilot valves
		2 Remote pressure port int. supply , NG6 interface <sup>2)</sup>
		3 Remote pressure port ext. supply <sup>2)</sup>
		W With unloading function, 24VDC solenoid <sup>1)</sup>
		K Prop.-pilot valve type PVACRE..35 mounted
		Z Without integrated pilot valve, NG6 interface, for mounting of accessory code PVAC*
		B Without integrated pilot valve, without NG6 interface <sup>3)</sup>
		P MT1 with mounted pilot valve PVAC1P <sup>2)</sup>

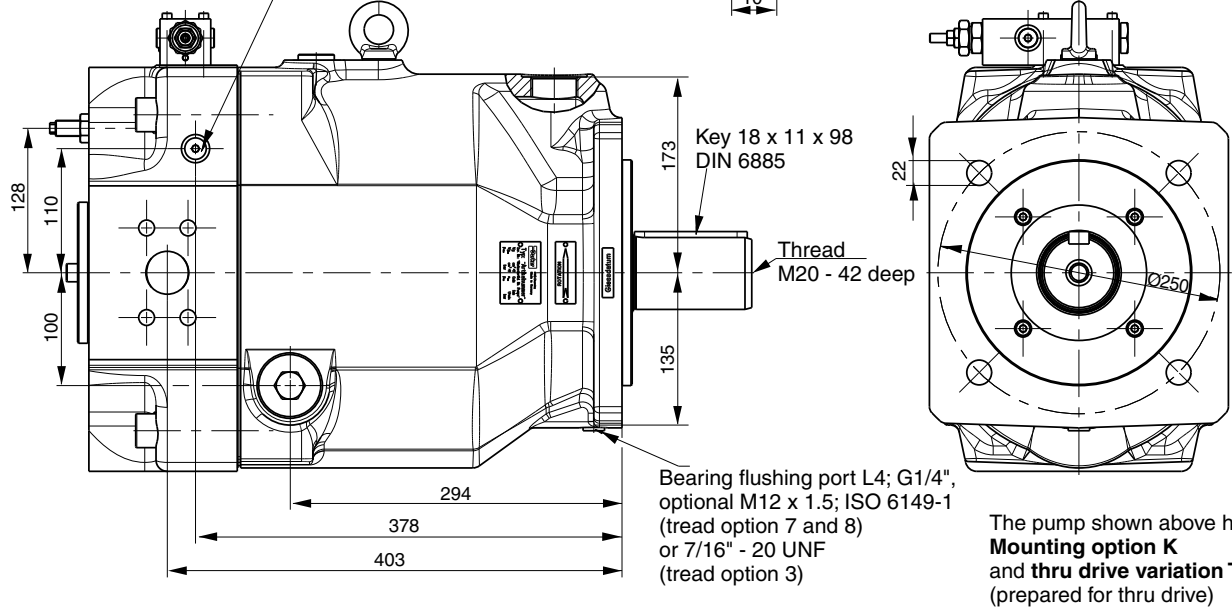
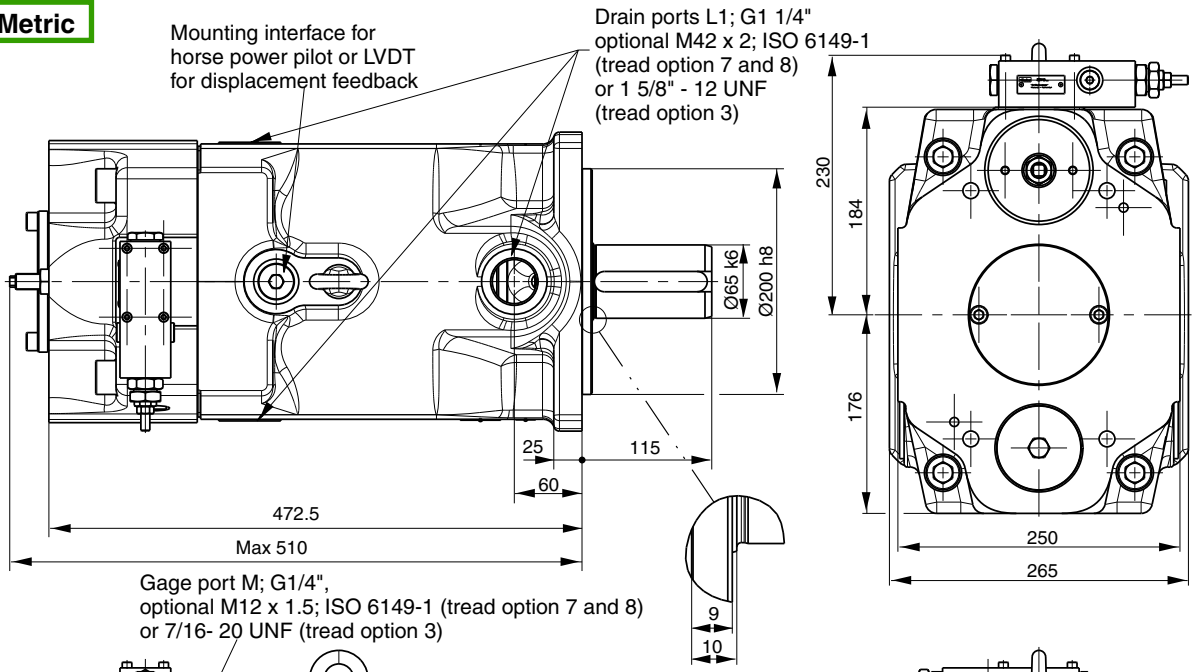
1) not for MT  
2) only for MT  
3) not for MT & MM

Horse power / Torque control					
Displacem.		Code		Nominal HP at 1.500 rpm	Nominal torque
270					
		T		37 kW	240 Nm
		U		45 kW	290 Nm
		W		55 kW	350 Nm
		Y		75 kW	480 Nm
		Z		90 kW	580 Nm
		2		110 kW	700 Nm
		3		132 kW	840 Nm
Function					
		L		Horse power control with pressure control <sup>4)</sup>	
		C		Horse power control with load sensing (single spool)	
Control variation					
		C		Standard version	
		1		NG 6 interface top side	
		W		With unloading function, 24 VDC solenoid	
		K		Prop.-pilot valve type PVACRE..35 mounted	
		Z		Without integrated pilot valve, NG6 interface, for mounting of accessory code PVAC* <sup>4)</sup>	
		B		Without integrated pilot valve, without NG6 interface <sup>4)</sup>	

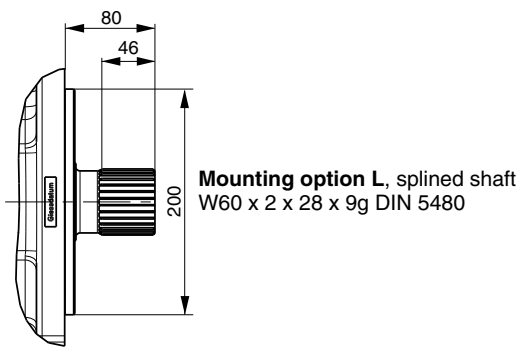
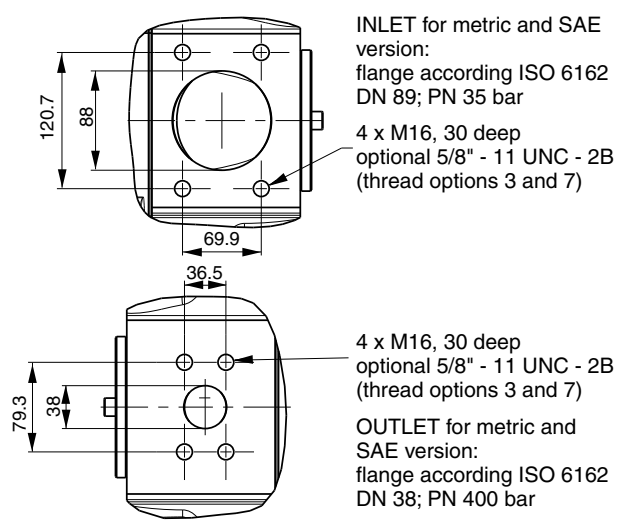
4) control variation Z and B without pressure control

Code		Control option
Electro hydraulic control		
F	D	V Proportional displacement control, no pressure compensation
U	D	Proportional displacement control, with pressure compensation
Control variation		
		R pilot operated pressure control, open NG6 interface
		K pilot operated pressure control, proportional pilot valve type PVACRE..35 mounted
		M pilot operated pressure control, pressure sensor and proportional pilot valve type PVACRE..35 mounted for pressure control and/or power control

**PV 270 Metric**



The pump shown above has **Mounting option K** and **thru drive variation T** (prepared for thru drive)



Shown is a clockwise rotating pump with standard pressure control. Counter clockwise rotating pump have inlet, outlet and gage port reversed.