



OPERATION

Solenoid Valve, Spool Type, 2-Position, 3-Way, High Flow (15-Size). When de-energized, the SV15-23-04 allows flow from port 3 to port 2, blocking port 1. When energized, ports 2 and 1 are connected, blocking port 3. Port 1 may be fully pressurized, but is not intended to be the inlet port. Follow the "Operating Envelope" limits to ensure shifting of the valve during operation. This valve is a direct replacement for EDH 12/3201 and uses a metric M33x2 cavity (NCS 12/3) for high flow capability.



Shown with Standard Coil,
Deutsch Connector

APPLICATIONS

These spool-type valves are primarily used in mobile and industrial applications for controlling the direction of the flow in a circuit like a single-acting cylinder, clutch, brake, circuit selector valve, or pilot for a large directional spool valve. Solenoid spool-type valves are direct acting and respond quickly to coil voltage input. Spool valves will have some leakage due to spool clearance, so if your application requires no leakage at the working port(s), apply a low leakage poppet valve(s), like PO check valve, counterbalance valve, etc., in addition to this solenoid valve. This valve can operate with an inlet pressure of 315 bar for 100,000 cycles. In case of inlet from port 2 this value can be increased to 300,000 cycles.

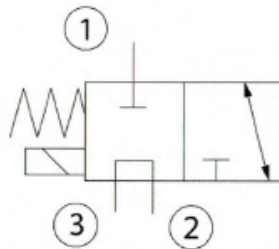
SPECIFICATIONS

Rated Pressure*	210 bar [3045 psi]**
Maximum Rated Flow at 7 bar [100 psi]	50 l/min [13 US gal/min]
Weight including coil	0.89 kg [1.96 lbs]
Cavity	NCS 12/3
Coil	M19-33W
Diode (Optional)	Unidirectional

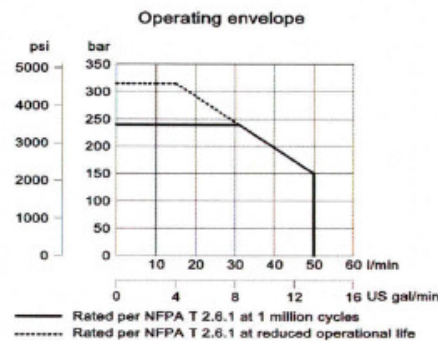
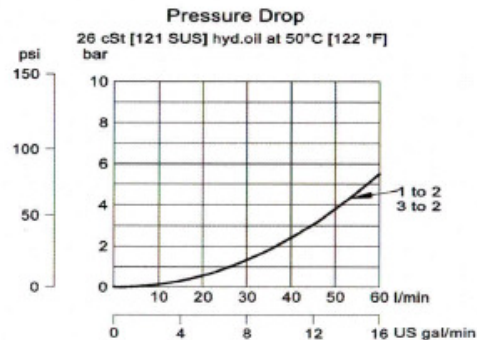
* Rated Pressure based on NFPA fatigue test standards (at 1 Million Cycles).

** See 315 bar pressure rating note on page 10.

SCHEMATIC



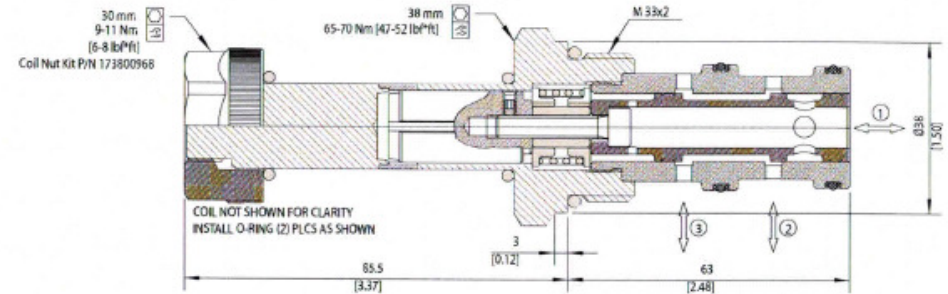
PERFORMANCE CURVES



11141717 • Rev BA • March 2015

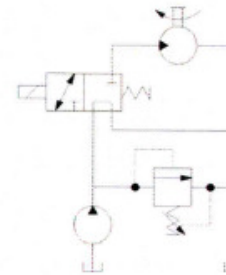


DIMENSIONS

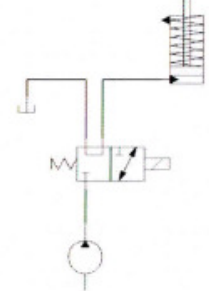


EXAMPLE CIRCUITS

Uni-directional Motor



Single Acting Cylinder



ORDERING INFORMATION

SV15 - 23 - 04 - 12D - DE - B - 00

Solenoid Valve, Spool Type, 15 Size Cavity	23: 2 Position, 3 Way	04: Schematic type	Coil Voltage	Standard Coil Code	Coil Termination	Standard Coil Code	IP Rating
			No Coil, with nut**	00	No Coil	00	
			10VDC	100	Amp Junction	AJ	IP67
			12VDC	120	Amp Junction with Diode	AJD	IP67
			20VDC	200	Deutsch	DE	IP67
			24VDC	240	Deutsch with Diode	DED	IP67
			110VAC**	110A	Flying Leads	FL	IP65
			230VAC**	230A	DN 466SD	DN	IP65

* Standard coil - plastic nut and O-rings
** External Rectifier Needed - DN termination only

SV - Solenoid Valves
SV15-23-04

SV - Solenoid Valves
SV15-23-04