

Ordering Code: **RP-10A-X-Y-Z**

Control Option:
Maximum extension
from locating shoulder.
(L Control shown)

G Control

22.2 Hex.
(7/8 inch)

M20x1.5

Outlet ②

Inlet ①

Locating Shoulder

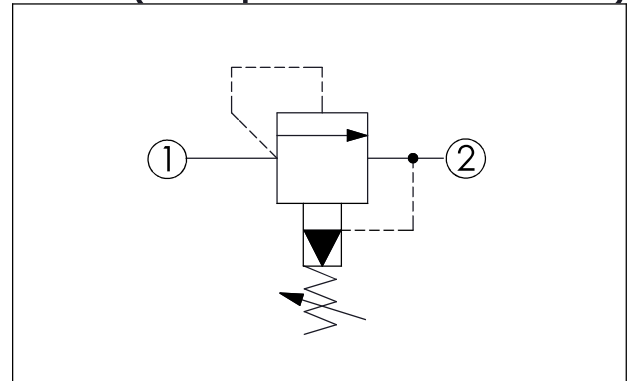
38.5

40

Ø 19

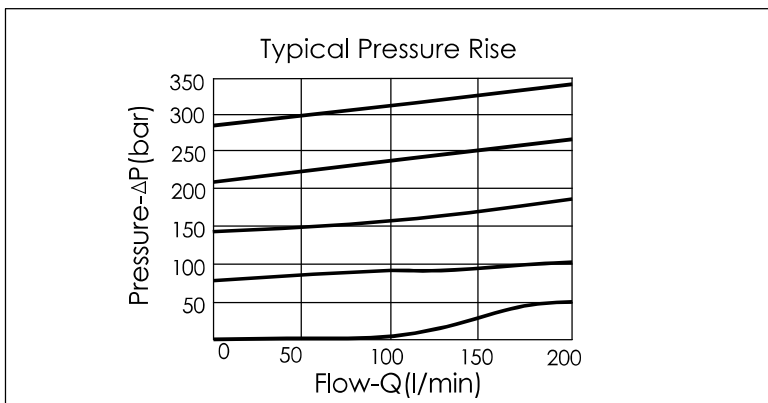
L=51
K=57

UNIT:mm



TECHNICAL DATA	
Max.Operating pressure:	350 bar
Rated flow:	95 l/min
Cavity-Tooling:	10A-2
Installation torque:	40-50 Nm
Weight:	0.14 kg
Will accept maximum pressure at port 2; suitable for use in cross port relief circuits. If used in cross port relief circuits, consider pool leakage.	

X	OPERATION
20	1 to 2 (P to T)
Response Time-Typical (10 ms) Maximum Leakage (33 cc/min./70 bar)	



Z	OPTIONS
L	Leakproof hex. socket screw.
LF	Leakproof hex. socket screw with Panel Mount.
K	Handknob with Lock Knob.
KF	Handknob with Panel Mount.
C	Stainless Steel Tamper Resistant Cover.
G	Wrench Adjustment

Y	SPRINGS
ADJUSTMENT RANGES	
A	7 to 210 bar (70 bar Standard Setting)
B	3.5 to 105 bar (70 bar Standard Setting)
C	10 to 420 bar (70 bar Standard Setting)
D	1.7 to 55 bar (28 bar Standard Setting)
E	1.7 to 28 bar (14 bar Standard Setting)
N	4 to 55 bar (28 bar Standard Setting)
Q	4 to 28 bar (14 bar Standard Setting)
W	10.5 to 315 bar (70 bar Standard Setting)