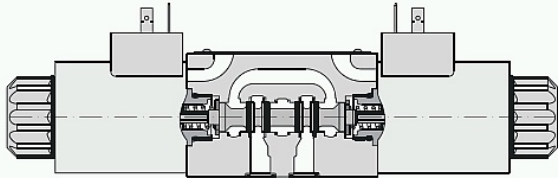
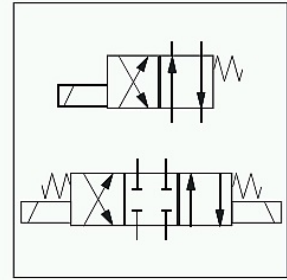


Characteristics

The Denison series 4D01 is a solenoid operated directional control valve size NG06 in 3-chamber design. It is direct operated by wet pin solenoids.

The 4D01 is available with a Soft Shift option for smooth operation. An additional orifice in the solenoid anchor dampens the shifting time.



Ordering Code 4D01 3111 A101 C1G0Q

General		Directional spool valve				
Design		Solenoid				
Actuation		DIN NG06 / CETOP 03 / NFPA D03				
Nominal size		DIN 24340 A6 / ISO 4401 / CETOP RP 121-H / NFPA D03				
Mounting interface		Unrestricted, preferably horizontal				
Ambient temperature		[°C]	-25...+50			
Weight		[kg]	1 sol.: 1.4 (DC), 1.5 (AC) / 2 sol.: 1.7 (DC), 1.8 (AC)			
Hydraulic		P, A B: 350				
Max. operating pressure		[bar]	T: 210 (DC), 140 (AC)			
Fluid		Hydraulic oil in accordance with DIN 51524 / 51525				
Fluid temperature		[°C]	-25 ... +70			
Viscosity permitted		[cSt] / [mm²/s]	10...650			
Viscosity recommended		[cSt] / [mm²/s]	30			
Filtration		ISO 4406 (1999); 18/16/13 (meet NAS 1638: 7)				
Flow max.		[l/min]	80			
Leakage at 50 bar		[ml/min]	Up to 10 per flow path, depending on spool			
Static / Dynamic		Step response at 95%				
		[ms]	Energized: 46 (DC), 20 (AC) / De-energized: 27 (DC), 18 (AC) / Quick energized: 30 (DC)			
Electrical characteristics		Duty ratio				
		100% ED; CAUTION: coil temperature up to 180 °C possible				
Max. switching frequency		[1/h]	16000 (DC), 7200 (AC)			
Protection class		IP 65 in accordance with EN 60529 (plugged and mounted)				
		Code	G0R	G0Q	W06	W07
Supply voltage		[V]	12 V =	24 V =	150 at 50Hz	230 at 50Hz
Tolerance supply voltage		[%]	+5...-10	+5...-10	+5...-10	+5...-10
Power consumption hold		[W]	31	31	78	78
Power consumption in rush		[W]	31	31	264	264
Solenoid connection		Connector as per EN 175301-803, solenoid identification as per ISO 9461.				
Wiring min.		[mm²]	3 x 1.5 recommended			
Wiring length max.		[m]	50 recommended			

Dimensions

Interface EN 175301-803, DC solenoid
01, 06 -style

02, 05 -style

