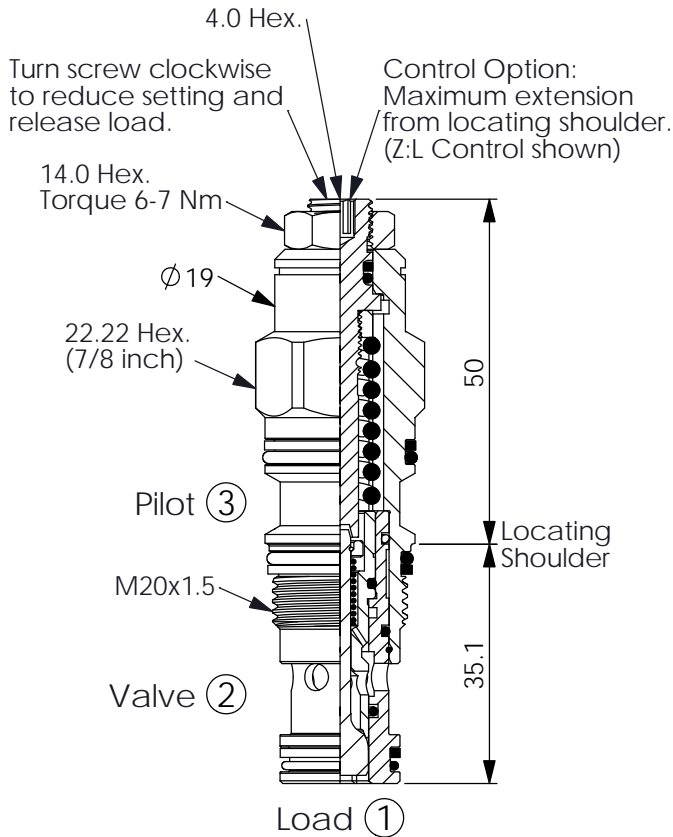
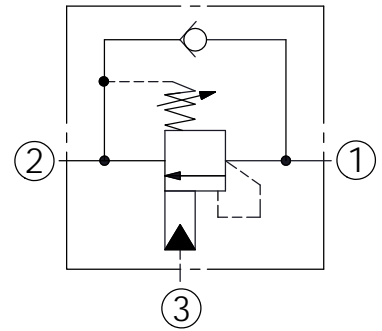
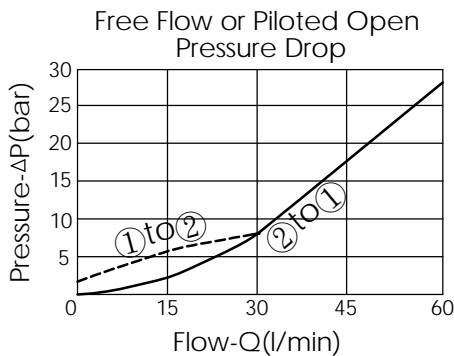


## COUNTERBALANCE VALVE

Ordering Code: **CB-11A-X-Y-Z**



UNIT:mm



### TECHNICAL DATA

Max. Setting:	280	bar
Rated flow:	60	l/min
Cavity-Tooling:	11A-3	
Installation torque:	40-50	Nm
Weight:	0.16 (Z=L,LP)	kg
Pressure Setting:	Setting should be 1.3 times maximum load induced pressure. (We suggest when the Max. setting pressure is 280 bar, the load pressure has to be lower than 215 bar.)	

### X PILOT RATIO

<b>33</b>	<b>3 : 1</b>
<b>3A</b>	1.5 : 1 (with sealed pilot)
<b>3C</b>	3 : 1 (with sealed pilot)
<b>3Q</b>	2 : 1 (with bleed through pilot)

### Z OPTIONS

<b>L</b>	Leakproof hex. socket screw.	
<b>LP</b>	Leakproof hex. socket screw. With stainless steel external metal components	
<b>C</b>	Stainless Steel Tamper Resistant Cover.	
<b>T</b>	Three-winged Handknob Kit.	

### Y SPRINGS

ADJUSTMENT RANGES(2 bar Cracking Pressure)

**H** 70-280 bar (210 bar Standard Setting)

**I** 25-105 bar (70 bar Standard Setting)

SPECIAL PURPOSES(0.3 bar Cracking Pressure)

**A** 70-280 bar (210 bar Standard Setting)

**B** 25-105 bar (70 bar Standard Setting)

**E** 16-55 bar (25 bar Standard Setting)