

Ordering Code: **RV-11A-X-Y-Z**

Control Option:  
Maximum extension  
from locating shoulder.  
(Z:L Control shown)

4.0 Hex.

14.27 Hex. (9/16 inch)  
Torque 9-10 Nm  
Apply CH (5JAA097)  
Plastic tamper  
resistant cover

22.22 Hex.  
(7/8 inch)

Ø19

Vent ③

M20x1.5

Out ②

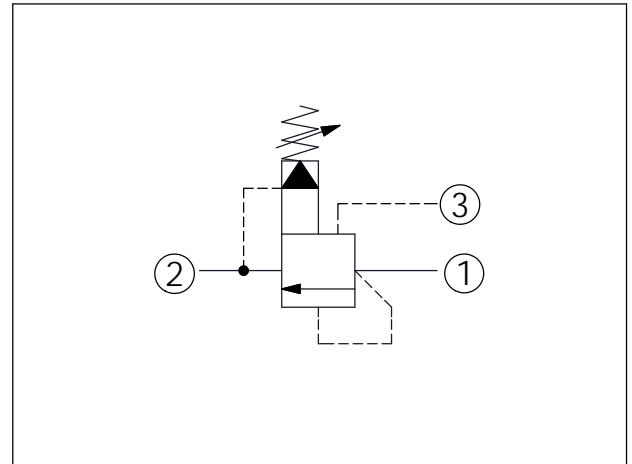
In ①

Locating  
Shoulder

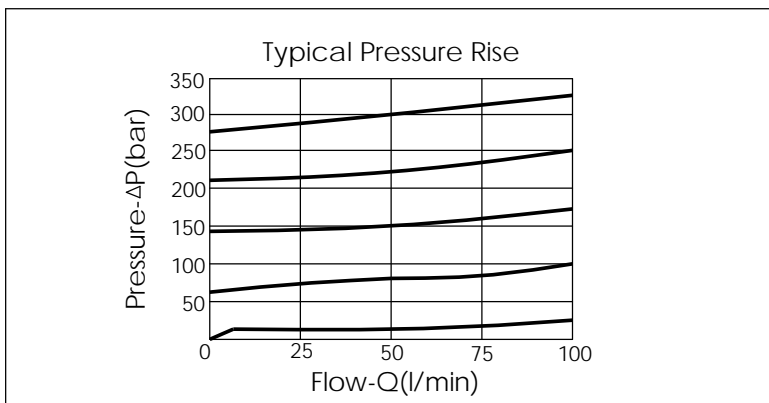
35.1

L=64  
K=70

UNIT:mm



| TECHNICAL DATA   |               |
|--|---------------|
| Max. Operating pressure:   | 350 bar       |
| Rated flow:  | 60 l/min      |
| Cavity-Tooling:  | 11A-3         |
| Installation torque:   | 40-50 Nm      |
| Weight:  | 0.15 (Z=L) kg |
| Will accept maximum pressure at port 2; suitable for use in cross port relief circuits. If used in cross port relief circuits, consider spool leakage. |               |



| X  | OPERATION     |  |
|--|---------------|--|
| 30   | Standard Type |  |
| <ul style="list-style-type: none"> <li>Response Time-Typical (10 ms)</li> <li>Maximum Leakage (33 cc/min./70 bar)</li> </ul> |               |  |

| Y | SPRINGS           |                           |
|---|-------------------|---------------------------|
|   | ADJUSTMENT RANGES |                           |
| A | 7-210 bar         | (70 bar Standard Setting) |
| B | 3.5-105 bar       | (70 bar Standard Setting) |
| C | 10.5-420 bar      | (70 bar Standard Setting) |
| D | 1.7-55 bar        | (28 bar Standard Setting) |
| E | 1.7-28 bar        | (14 bar Standard Setting) |
| H | 2-210 bar         | (70 bar Standard Setting) |
| W | 10.5-315 bar      | (70 bar Standard Setting) |

| Z | OPTIONS                                 |  |
|---|---|--|
| L | Leakproof hex. socket screw.            |  |
| K | Handknob with Lock Knob.                |  |
| C | Stainless Steel Tamper Resistant Cover. |  |