

Ordering Code: **RD-10A-X-Y-Z**

Control Option:
Maximum extension
from locating shoulder.
(Z:L Control shown)

4.0 Hex.

14.27 Hex. (9/16 inch)
Torque 9-10 Nm
Apply CH (5JAA097)
Plastic tamper
resistant cover

Ø 19

22.22 Hex.
(7/8 inch)

M20x1.5

Outlet ②

Inlet ①

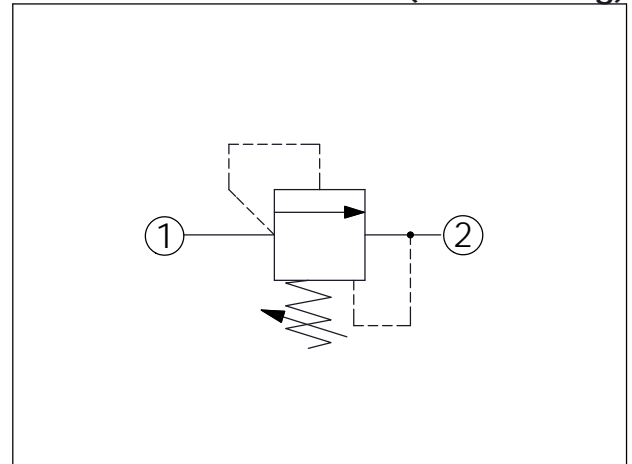
57

5.7

Locating
Shoulder

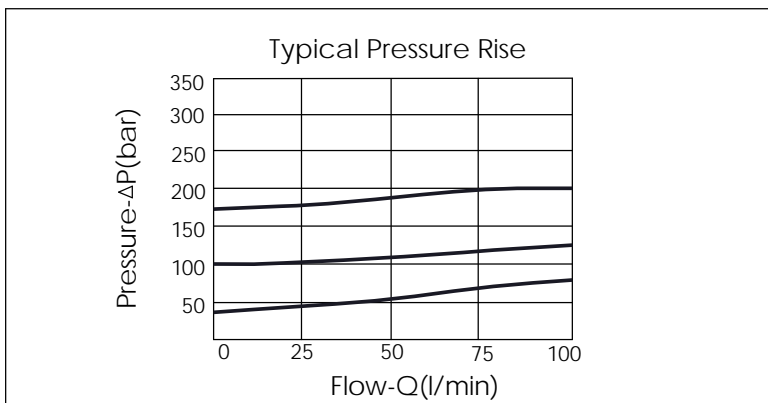
39

UNIT:mm



TECHNICAL DATA		
Max. Operating pressure:	350 bar	
Rated flow:	95	l/min
Cavity-Tooling:	10A-2	
Installation torque:	40-50	Nm
Weight:	0.17	kg
Will accept maximum pressure at port 2; suitable for use in cross port relief circuits.		

X OPERATION		
25	Direct Acting 1 to 2 (P to T)	
<ul style="list-style-type: none"> • Response Time-Typical (2 ms) • Maximum Leakage (0.7 cc/min.) • Dirt tolerant 		



Z OPTION		
L	Leakproof hex. socket screw.	
LP	Leakproof hex. socket screw. With stainless steel external metal components	
CP	Stainless Steel Tamper Resistant Cover. With stainless steel external metal components	
CB	Plastic Tamper Resistant Cover	

Y PRESSURE SETTING		
A	35-210 bar (70 bar Standard Setting)	
B	20-105 bar (70 bar Standard Setting)	
C	70-420 bar (70 bar Standard Setting)	
D	14-55 bar (28 bar Standard Setting)	
E	10-28 bar (14 bar Standard Setting)	
S	3.5-14 bar (7 bar Standard Setting)	
W	55-315 bar (70 bar Standard Setting)	