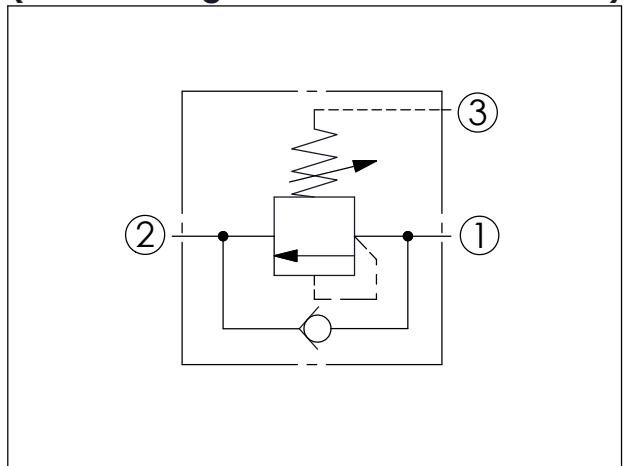
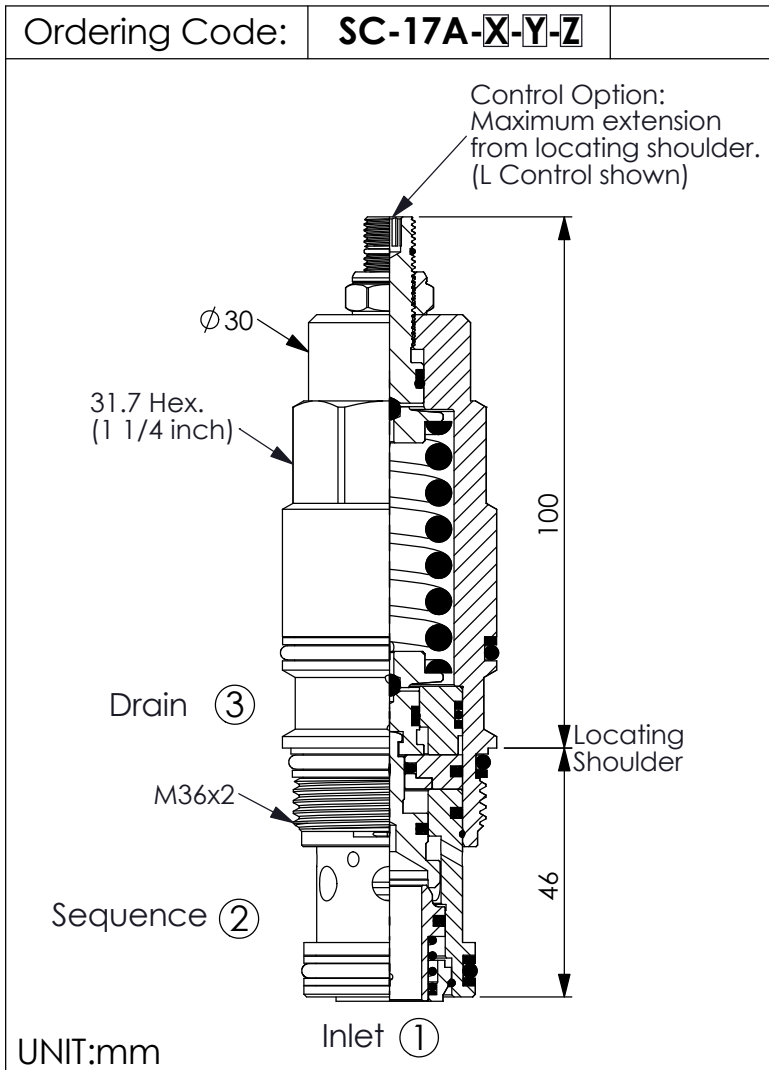
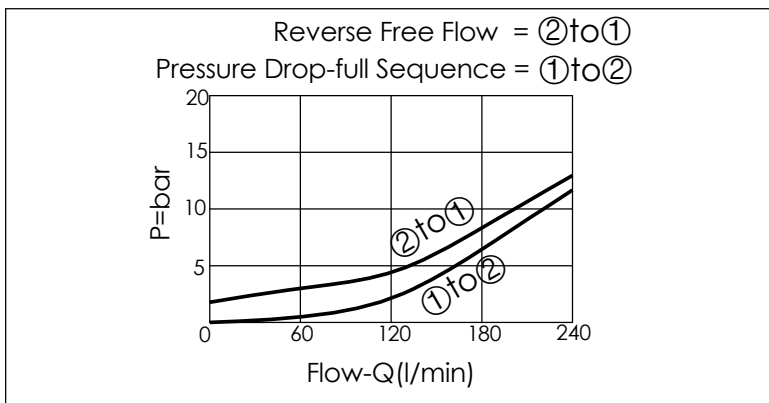


## SEQUENCE VALVE (Direct Acting with Reverse Flow Check)



TECHNICAL DATA		
Max.Operating pressure:	350	bar
Rated flow:	240	l/min
Cavity-Tooling:	17A-3	
Installation torque:	200-215	Nm
Weight:	0.73	kg



X	OPERATION	
30	Standard Type	
Response Time-Typical (2 ms) Maximum Valve Leakage at Restat (0.7 cc/min.)		

Y	SPRINGS	
	ADJUSTMENT RANGES	
A	35 to 210 bar	(70 bar Standard Setting)
B	20 to 105 bar	(70 bar Standard Setting)
C	40 to 420 bar	(140 bar Standard Setting)
D	14 to 55 bar	(28 bar Standard Setting)
E	7 to 28 bar	(14 bar Standard Setting)
W	55 to 315 bar	(70 bar Standard Setting)

Z	OPTIONS	
L	Leakproof hex. socket screw.	
C	Stainless Steel Tamper Resistant Cover.	