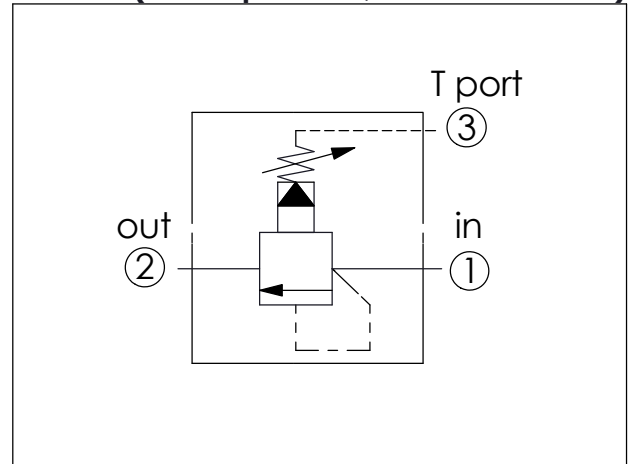
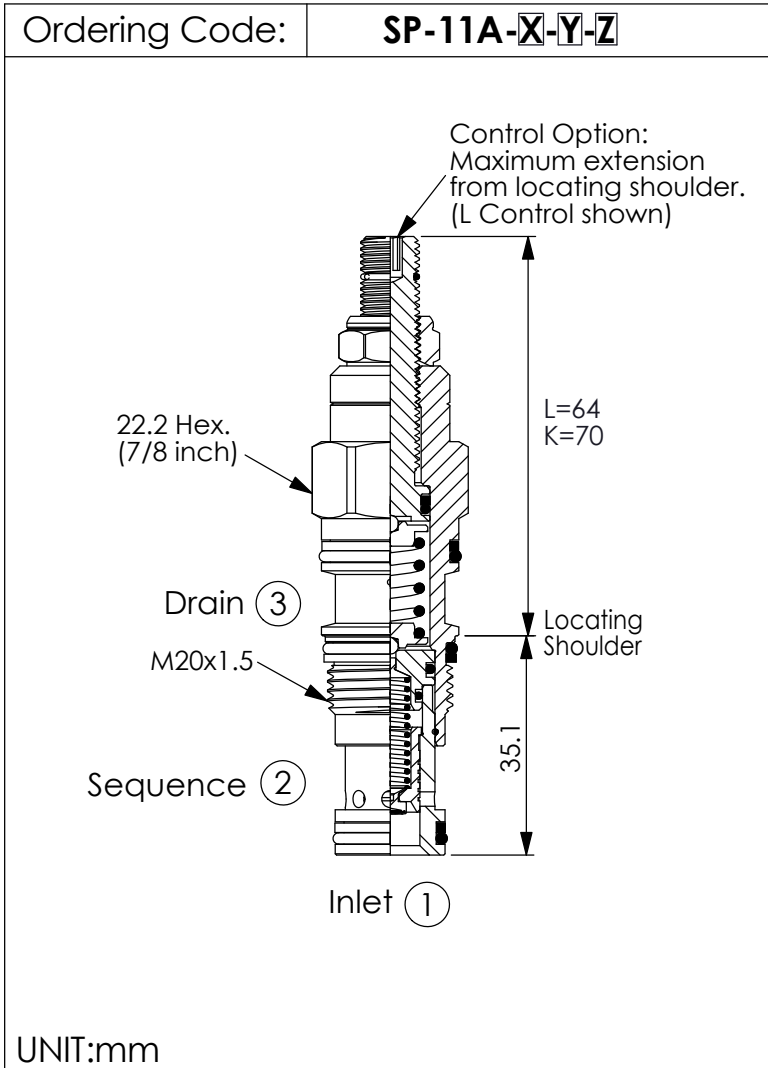
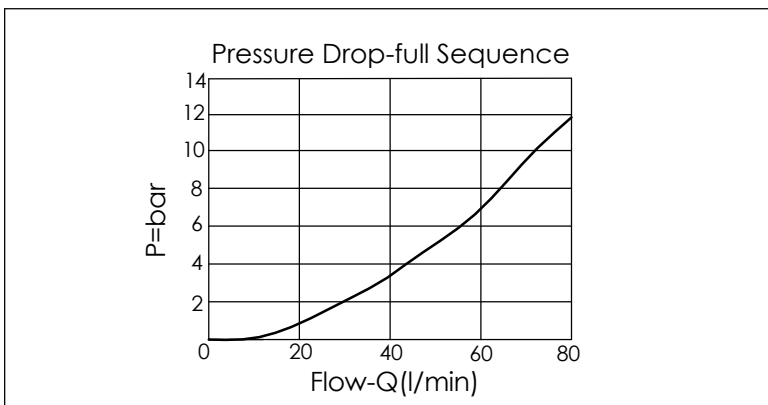


**SEQUENCE VALVE**  
(Pilot Operated, Balanced Piston)

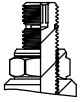
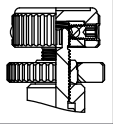


TECHNICAL DATA		
Max. Operating pressure:	350	bar
Max. flow:	60	l/min
Cavity-Tooling:	11A-3	
Installation torque:	40-50	Nm
Weight:	0.15	kg



X	OPERATION
30	Standard Type

Y	SPRINGS
	ADJUSTMENT RANGES
A	7 to 210 bar (70 bar Standard Setting)

Z	OPTIONS
L	Leakproof hex.socket screw. 
K	Handknob with Lock Konb. 
C	Tamper Resistant Cover. 