

SEQUENCE VALVE (Direct Acting with Reverse Flow Check)

Ordering Code: **SC-11A-X-Y-Z**

Control Option:
Maximum extension
from locating shoulder.
(L Control shown)

Ø 19

22.2 Hex.
(7/8 inch)

79

Drain ③

M20x1.5

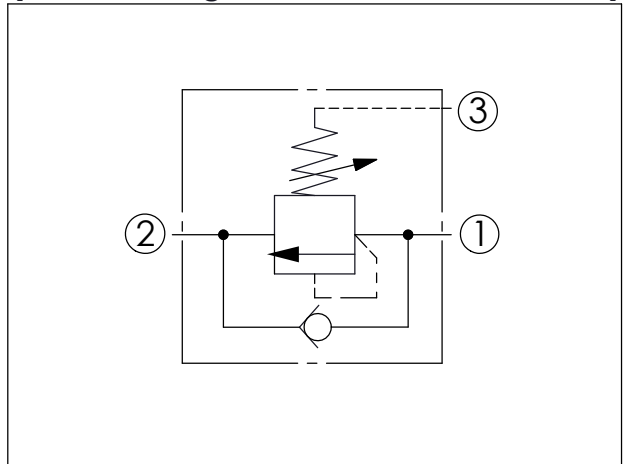
Locating
Shoulder

35.1

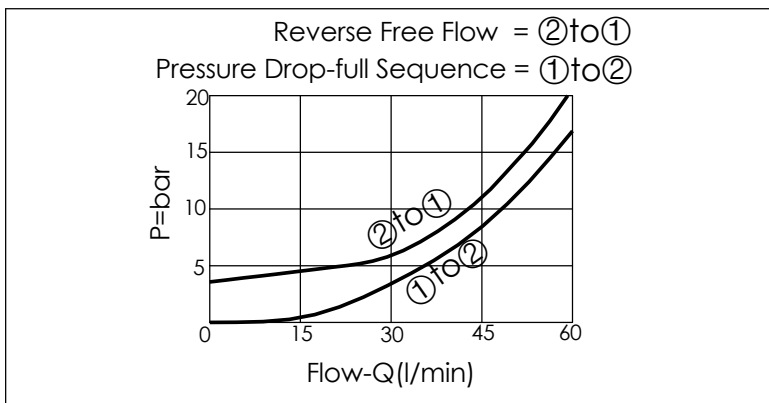
Sequence ②

Inlet ①

UNIT:mm



TECHNICAL DATA		
Max. Setting:	420	bar
Rated flow:	60	l/min
Cavity-Tooling:	11A-3	
Installation torque:	40-50	Nm
Weight:	0.20 (Z:L,LP)	kg



X	OPERATION	
30	Standard Type	
Response Time-Typical (2 ms) Maximum Leakage (0.3 cc/min./70 bar) (46 cSt, 40°C)		

Y	SPRINGS	
	ADJUSTMENT RANGES	
A	35-210 bar	(70 bar Standard Setting)
B	20-105 bar	(70 bar Standard Setting)
C	140-420 bar	(140 bar Standard Setting)
D	14-55 bar	(28 bar Standard Setting)
E	7-28 bar	(14 bar Standard Setting)
W	55-315 bar	(70 bar Standard Setting)

※ Port ② to Port ① Check Valve Cracking Pressure 2.8 bar

Z	OPTIONS	
L	Leakproof hex. socket screw.	
LP	Leakproof hex. socket screw. With stainless steel external metal components	
C	Stainless Steel Tamper Resistant Cover.	