

Ordering Code: **SC-11A-X-Y-Z**

Control Option:  
Maximum extension  
from locating shoulder.  
(L Control shown)

Ø19

22.2 Hex.  
(7/8 inch)

79

Without Drain ③

M20x1.5

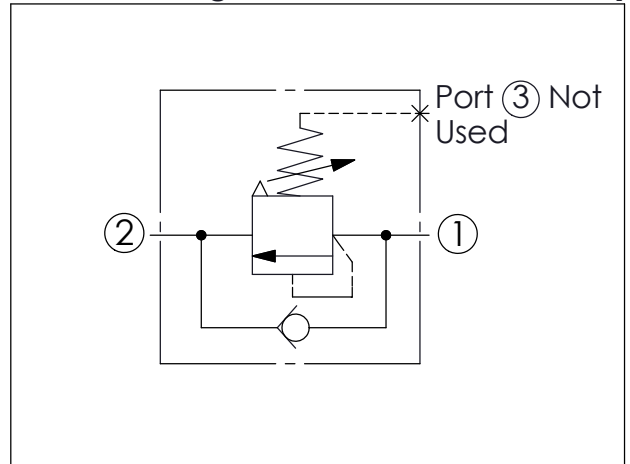
Sequence ②

Locating  
Shoulder

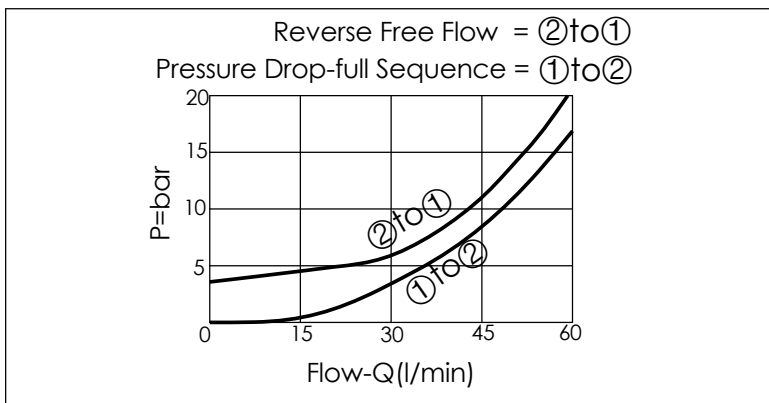
35.1

Inlet ①

UNIT:mm



TECHNICAL DATA		
Max.Operating pressure:	350	bar
Rated flow:	60	l/min
Cavity-Tooling:	11A-3	
Installation torque:	40-50	Nm
Weight:	0.20	kg



X	OPERATION	
<b>20</b>	Standard Type	
Response Time-Typical (2 ms) Maximum Valve Leakage at Restat (0.7 cc/min.)		

Y	SPRINGS	
	ADJUSTMENT RANGES	
<b>A</b>	35 to 210 bar	(70 bar Standard Setting)
<b>B</b>	20 to 105 bar	(70 bar Standard Setting)
<b>C</b>	140 to 420 bar	(140 bar Standard Setting)
<b>D</b>	14 to 55 bar	(28 bar Standard Setting)
<b>E</b>	7 to 28 bar	(14 bar Standard Setting)
<b>W</b>	55 to 315 bar	(70 bar Standard Setting)

Z	OPTIONS	
<b>L</b>	Leakproof hex. socket screw.	
<b>LP</b>	Leakproof hex. socket screw. With stainless steel external metal components	
<b>C</b>	Stainless Steel Tamper Resistant Cover.	