



# Relief Valves

## RVC0.S10 Valve Series

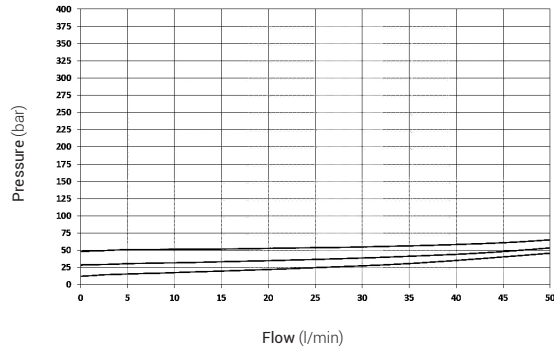
### Springs' Graphs

Note: The performance chart illustrates flow handling capacity for each spring bias options. p/Q curves are recorded at TOil = 40°C and 46 cSt

Spring = Y (15 - 60bar)

①

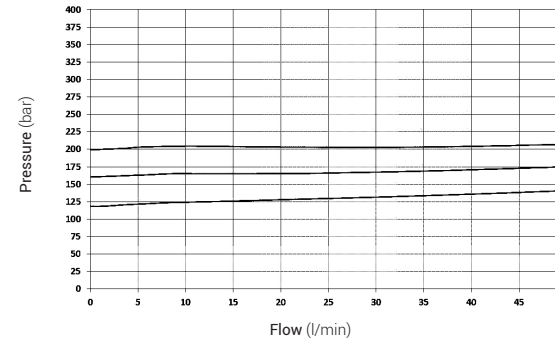
p/Q performance



Spring = B (50 - 220bar)

③

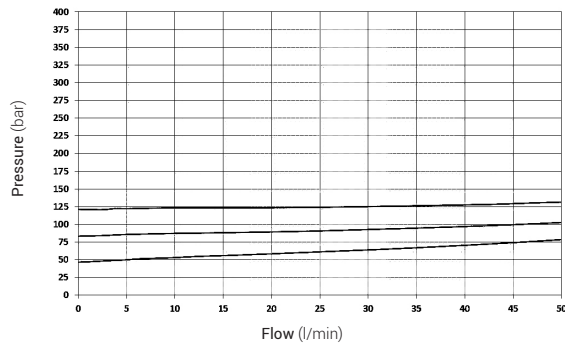
p/Q performance



Spring = N (25 - 135bar)

②

p/Q performance



Spring = G (120 - 350bar)

④

p/Q performance

