

Ordering Code: **RD-10A-X-Y-Z**

Control Option:
Maximum extension
from locating shoulder.
(Z=LS Control shown)

4.0 Hex.

3/8"-24UNF-2A

14.27 Hex. (9/16 inch)
Torque 9-10 Nm
Apply CH (5JAA097)
Plastic tamper
resistant cover

Ø19

22.22 Hex.
(7/8 inch)

M20x1.5

Outlet ②

Inlet ①

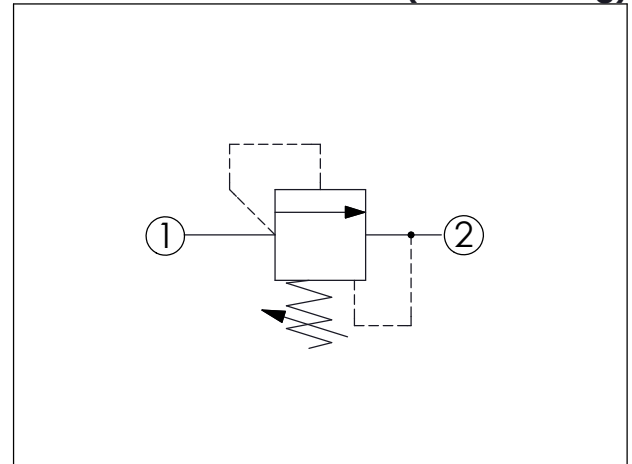
Locating
Shoulder

57

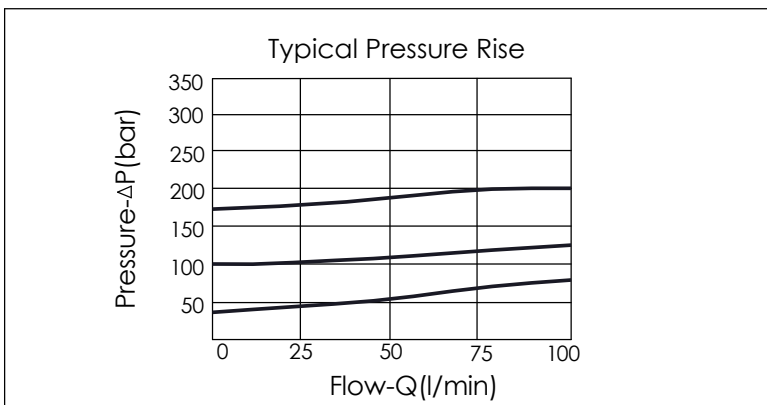
5.7

39

UNIT:mm



TECHNICAL DATA		
Max. pressure:	350	bar
Rated flow:	95	l/min
Cavity-Tooling:	10A-2	
Installation torque:	40-50	Nm
Weight:	0.17	kg
Will accept maximum pressure at port ②; suitable for use in cross port relief circuits.		



X	OPERATION	
25	Direct Acting	① to ② (P to T)
<ul style="list-style-type: none"> Response Time-Typical (2 ms) Maximum Leakage Approximately (0.7 cc/min.) Dirt tolerant 		

Y	PRESSURE SETTING	
A	35-210 bar (70 bar Standard Setting)	
B	20-105 bar (70 bar Standard Setting)	
C	70-420 bar (70 bar Standard Setting)	
D	14-55 bar (28 bar Standard Setting)	
E	10-28 bar (14 bar Standard Setting)	
S	3.5-14 bar (7 bar Standard Setting)	
W	55-315 bar (70 bar Standard Setting)	

Z	OPTION	
LS	Leakproof hex. socket screw. With stainless steel all metal components	