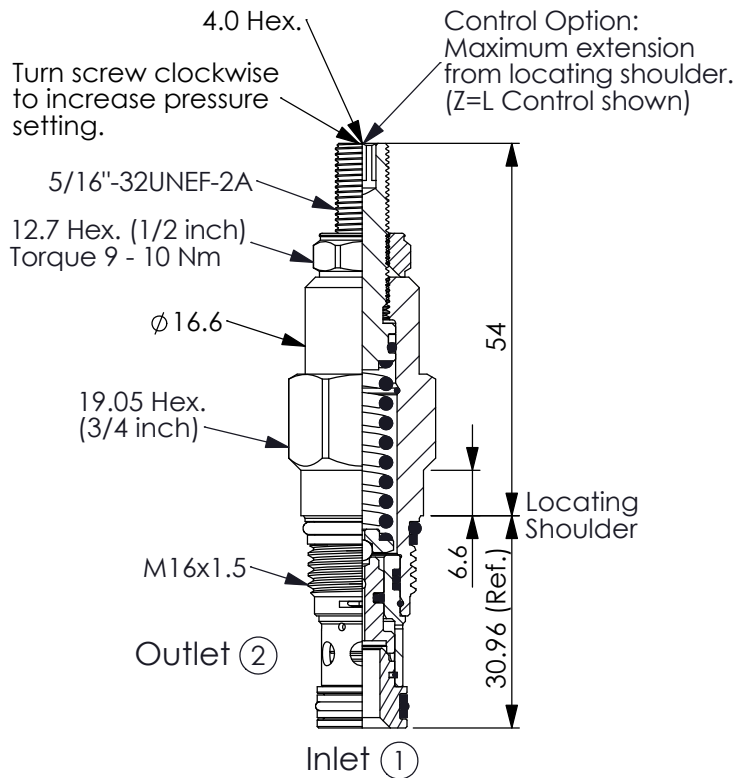
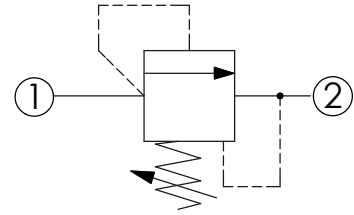


Ordering Code: **RD-162A-X-Y-Z**



UNIT:mm

Illustrations / detail are for reference only. Data subject to change.



### TECHNICAL DATA

Max. Operating pressure: 350 bar

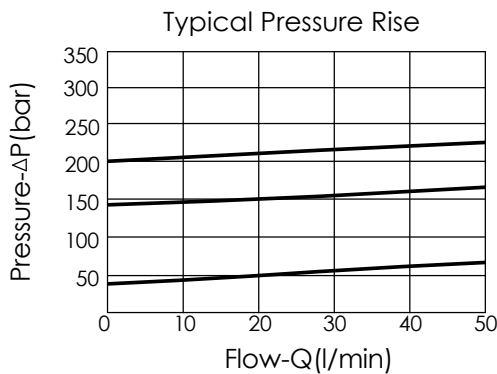
Rated flow: 45 l/min

Cavity-Tooling: 162A-2

Installation torque: 27 - 33 Nm

Weight: 0.10 (Z=L,LP) 0.12 (Z=K) kg

Will accept maximum pressure at port ② ; suitable for use in cross port relief circuits.



### X OPERATION

**25** Direct Acting  
① to ② (P to T)

- Response Time-Typical (2 ms)
- Maximum Leakage Approximately ( 5 drops/min. to 85% of nominal setting)
- Dirt tolerant

### Y PRESSURE SETTING

<b>A</b>	35 - 210 bar (70 bar Standard Setting)
<b>B</b>	20 - 105 bar (70 bar Standard Setting)
<b>C</b>	70 - 420 bar (70 bar Standard Setting)
<b>D</b>	14 - 55 bar (28 bar Standard Setting)
<b>E</b>	10 - 28 bar (14 bar Standard Setting)
<b>S</b>	3.5 - 14 bar (7 bar Standard Setting)
<b>W</b>	55 - 315 bar (70 bar Standard Setting)

### Z OPTIONS

<b>L</b>	Leakproof hex. socket screw.	
<b>LP</b>	Leakproof hex. socket screw. With stainless steel external metal components	
<b>K</b>	Handknob with Lock Knob. (Order Code: 7ZAK001)	