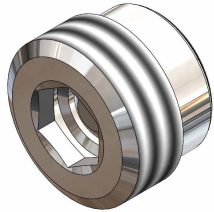


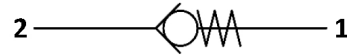
Check Valves

CVR0 Valve Series

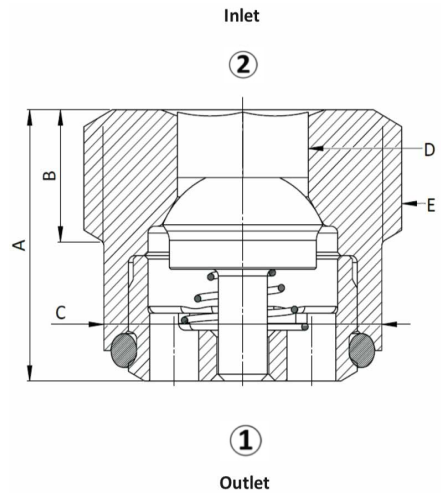
- GAS Cartridge - 350 bar
- Direct acting - Poppet type



Symbol



Cross Section



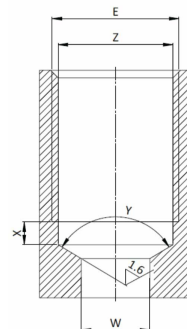
Description

A screw-in, direct acting, poppet type in-line check valve. Main use is as a blocking or load-holding device. The CVR0 allows flow passage from port 2 to 1: the cartridge has a fully guided check which is spring-biased closed until sufficient pressure is applied at port 2 to open to 1. The flow is blocked in the opposite direction (1 to 2).

Technical Features

All valve parts are made of high strength steel. Poppet and seat are hardened and ground to guarantee low wear and to extend service life. Suitable for heavy duty applications. Extremely compact size. Gas cavity.

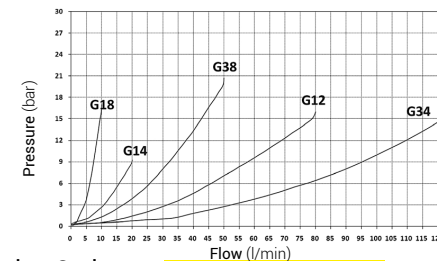
Cavity Details



Technical Data

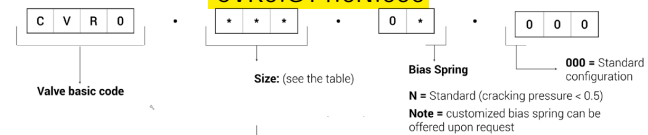
Maximum operating pressure	350 bar
Maximum flow	See table below
Cracking pressure	See table below
Maximum Internal Leakage	0,10 cm ³ / min @ 10 bar 0,10 cm ³ / min @ 350 bar
O-ring Temperature Range	-30° C to 110° C (standard sealing NBR - BUNA-N)
Oil Temperature Range	-30° C to 110° C
Fluids	Mineral - based or synthetics with lubricating properties
Viscosities	7,4 to 420 cSt
Filtration	20/18/15 ISO 4406 (maximum filtration admitted)
Orientation	No restrictions
Installation torque	see table below
Technical Specifications for characterization	see page 480
Oil testing condition	ISO VG 46 cSt
Seal kit code	See table below
Weight	See table below

Performance Details



Note: The performance chart illustrates flow handling capacity. p/Q curves are recorded at TOil = 40°C and 46 cSt

Ordering Code



Valve Details										Cavity Details				
E	A	B	C	D	MAX Flow	Install. Torque	Install. Tool	Seal Kit	Weight	Cavity code	x (max)	y	z	w
[size]	[mm]	[mm]	[mm]	[mm]	[l/min]	[Nm]	[code]	[code]	[kg]	[code]	[mm]	[mm]	[mm]	[mm]
G18	8,0	3,9	Ø8,5	4	10	9	-	SK.013	0,003	VH056	3,0	118°	Ø8,7	Ø5
G14	10,2	5,5	Ø11,5	6	20	15	-	SK.016	0,007	VH007	3,0	118°	Ø11,6	Ø7
G38	11,7	7,5	Ø14,9	8	50	25	-	SK.014	0,015	VH008	3,0	118°	Ø15,1	Ø9
G12	13,5	7,9	Ø18,7	10	80	40	-	SK.018	0,023	VH009	3,0	118°	Ø18,8	Ø12
G34	17,5	11,5	Ø24,0	10	120	50	-	SK.015	0,050	VH057	3,0	118°	Ø24,3	Ø18

Specifications may change without notice.