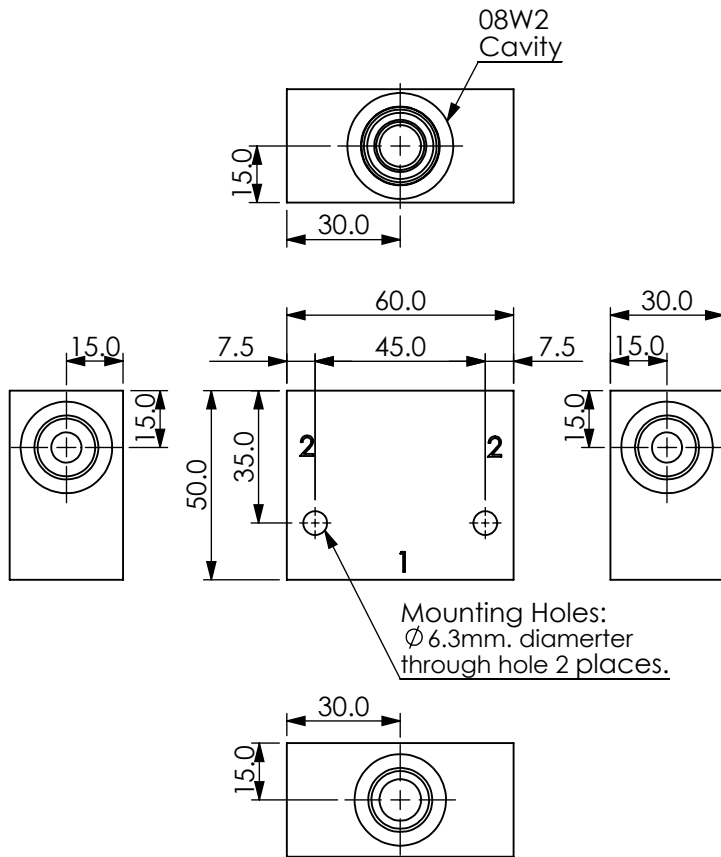
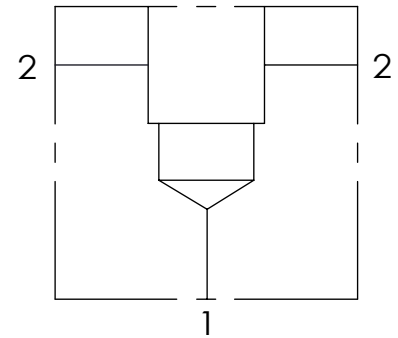


Ordering Code: **ML-08W2-X-Y 02-Z**



UNIT:mm



### TECHNICAL DATA

Aluminum Body Pressure Rating: 210 bar

**Steel Body Pressure Rating: 350 bar**

Cavity:

Refer to 08W2

\* Refer to Winner Cartridge Valves Catalog.

Aluminum	0.22 kg(WITHOUT VALVES)
<b>Steel</b>	0.55 kg(WITHOUT VALVES)

\* If you need the special specification.  
Please contact us.

### PORT SIZE

X	PORT	PORT	
	1	2	
<b>G03</b>	G 3/8"	G 3/8"	

### Y BODY MATERIAL

**A** HIGH-STRENGTH ALUMINUM

**T** STEEL (black oxide)

### Z CARTRIDGE VALVES SELECTION

**WITHOUT VALVE**

**RD0A** RD08W20AL(20LPM,80-210bar)

**EP01** EP08W2A01N05, 40LPM,350bar  
(NORMALLY CLOSED,WITHOUT COIL)

**EP02** EP08W2A02N05, 40LPM,350bar  
(NORMALLY OPEN,WITHOUT COIL)

**COIL MUST BE ORDERED SEPARATELY  
(REFER TO EC-04W-X-Y-Z)**

The selection is only example. Please refer to Winner Cartridge Program and to select the appropriate valves and manifolds assembly in accordance with request function (flow ` pressure ` ... etc.)