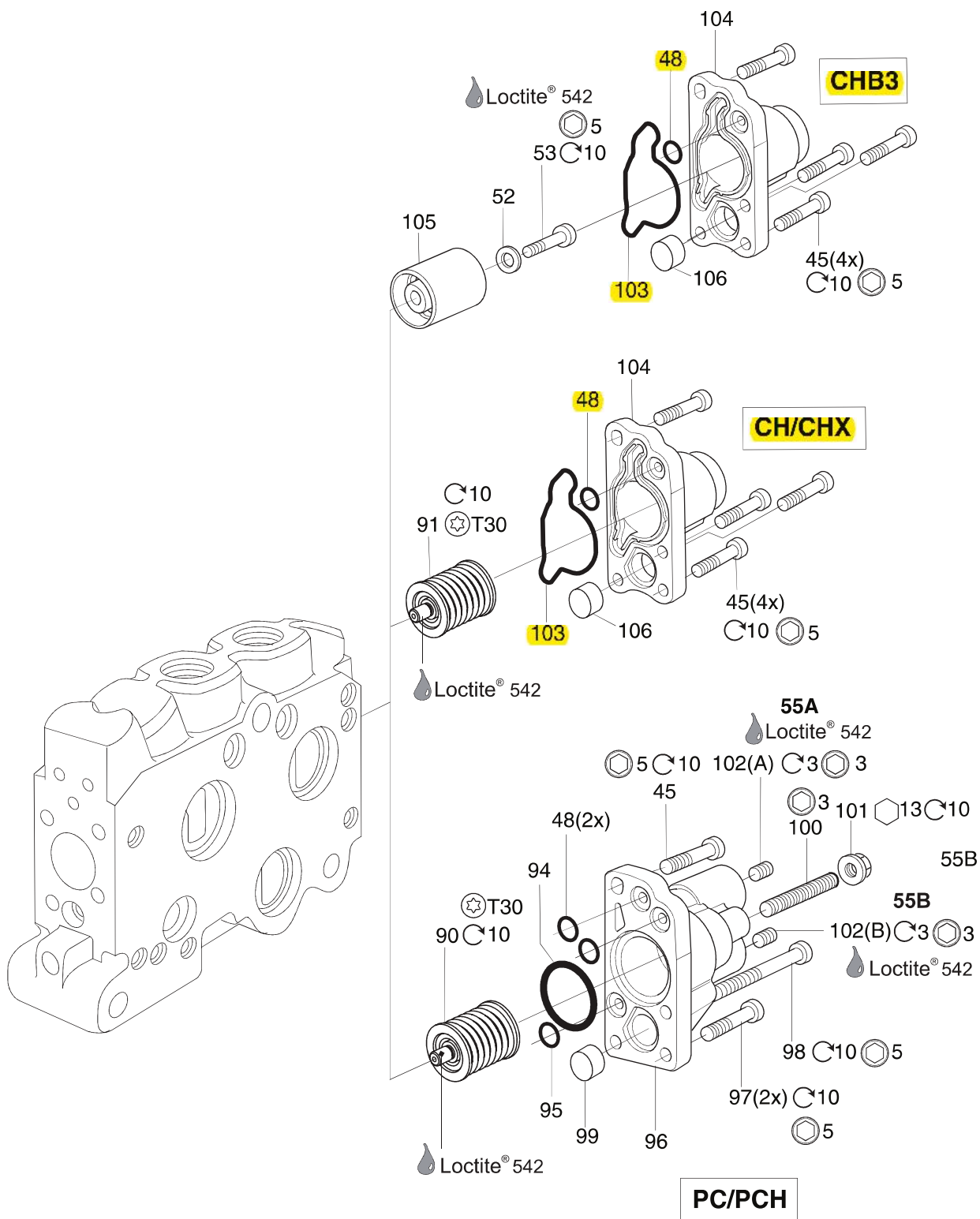


CH, CHX, CHB3, PC, PCH



| See Customer Specification | | | | |
|----------------------------|---------|-------------------|-----------------------------|---|
| Code | Pos | Part | Description | Remarks / Items |
| CH, CHX | 50 | 393000K339 | Cap kit | 45(4x), 48, 103, 104, 106 |
| CH, CHX | - | 393000K844 | Seal kit, cap | 48, 103 |
| CH | 50 | 393000K340 | Spring kit | 91 |
| CHX | 50 | 393000K341 | Spring kit | 91 |
| CHB3 | 50 | 393000K849 | Actuator with 3-pos. detent | 45(4x), 48, 52, 53, 103, 104, 105, 106 |
| CHB3 | - | 393000K844 | Seal kit | 48, 103 |
| PC, PCH | 50 | 393000K343 | Spring kit | 90 |
| PC, PCH + G | 50 + 04 | 393000K239 | Cap kit, (BSP) | 45, 48(2x), 94, 95, 96 [100, 101], 97(2x), 98, 99 |
| PC, PCH + U | 50 + 04 | 393000K240 | Cap kit, (UNF) | 45, 48(2x), 94, 95, 96 [100, 101], 97(2x), 98, 99 |
| PC, PCH | - | 393000K845 | Seal kit | 48(2x), 94, 95, 101 |
| 0,6 | 55A/B | 6760076 | Pilot restriction, ø0.6 | 102 (5x) |
| 0,8 | 55A/B | 6760102 | Pilot restriction, ø0.8 | 102 (5x) |
| 1,0 | 55A/B | 6760104 | Pilot restriction, ø1.0 | 102 (5x) |
| 1,2 | 55A/B | 6760106 | Pilot restriction, ø1.2 | 102 (5x) |
| 1,4 | 55A/B | 6760108 | Pilot restriction, ø1.4 | 102 (5x) |
| A016 + G | 50 + 04 | 393000K748 | Cap kit, BSP | Not shown |
| A016 + U | 50 + 04 | 393000K749 | Cap kit, UNF | Not shown |