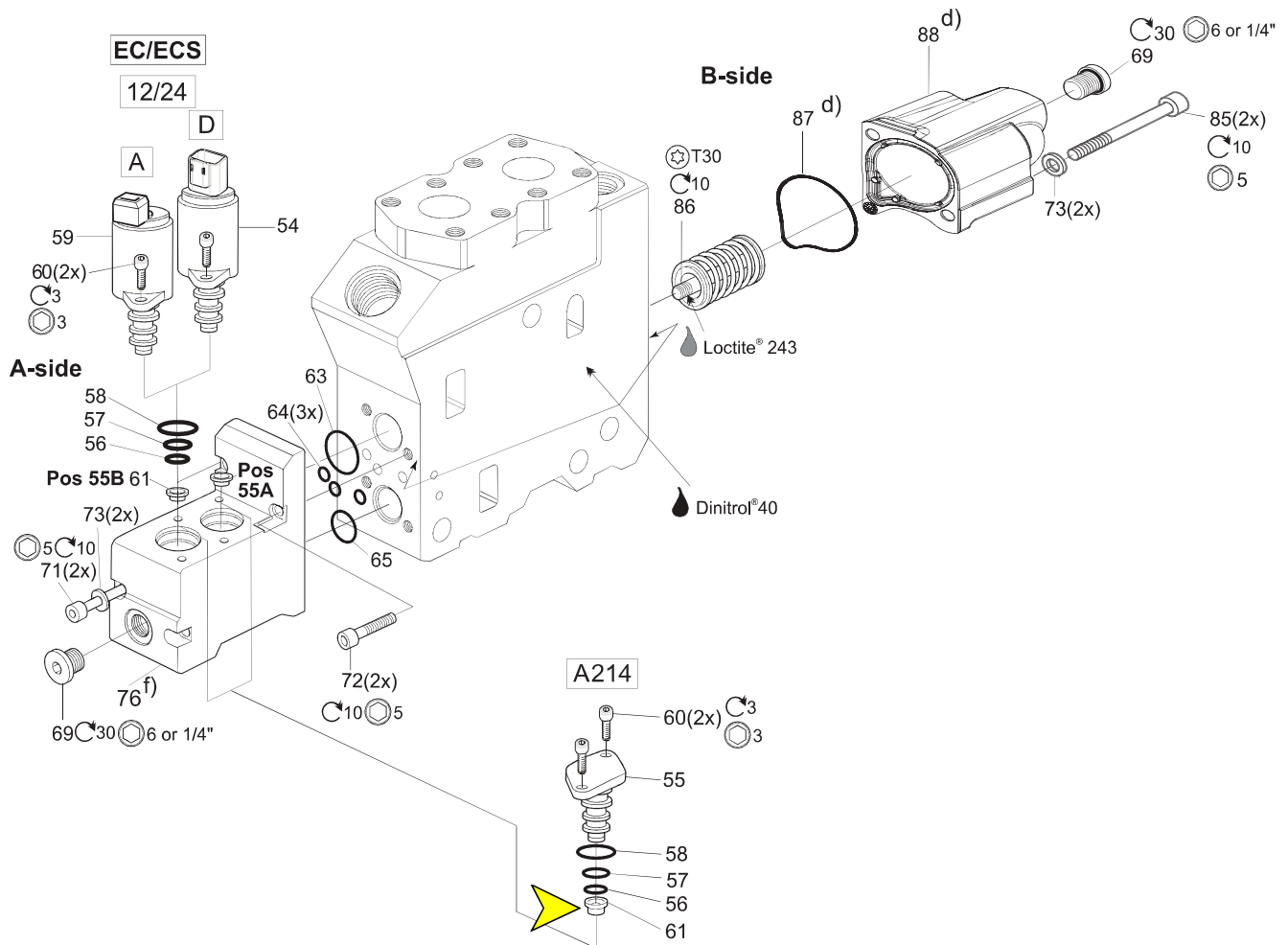



See Customer Specification				
Code	Pos	Part	Description	Remarks / Items
EC, ECS + MG	50 + 04	9120092334	Cap kit EC, A-side, BSP	63, 64(3x), 65, 69, 71(2x), 72(2x), 73(2x), 76
EC, ECS + MU, UU	50 + 04	9120092337	Cap kit EC, A-side, UNF	63, 64(3x), 65, 69, 71(2x), 72(2x), 73(2x), 76
EC, ECS + MG + KAP	50 + 04 + 66	6760553	Cap kit EC for KAP, A-side, BSP	63, 64(3x), 65, 69, 71(2x), 72(2x), 73(2x), 76
EC, ECS + MU, UU + KAP	50 + 04 + 66	6760555	Cap kit EC for KAP, A-side, UNF	63, 64(3x), 65, 69, 71(2x), 72(2x), 73(2x), 76
EC + 12 + A	50 + 05 + 56	393000M012	PVC25, 12 VDC	59 [56, 57, 58], 60(2x) Man. override, air bleed, AMP
EC + 24 + A	50 + 05 + 56	393000M024	PVC25, 24 VDC	59 [56, 57, 58], 60(2x) Man. override, air bleed, AMP
ECS + 12 + A	50 + 05 + 56	393000N012	PVC25, 12 VDC	59 [56, 57, 58], 60(2x) No man. override, no air bleed, AMP
ECS + 24 + A	50 + 05 + 56	393000N024	PVC25, 24 VDC	59 [56, 57, 58], 60(2x) No man. override, no air bleed, AMP
ECS + 12 + D	50 + 05 + 56	393000D012	PVC25, 12 VDC	54 [56, 57, 58], 60(2x) No man. override, no air bleed, Deutsch
ECS + 24 + D	50 + 05 + 56	393000D024	PVC25, 24 VDC	54 [56, 57, 58], 60(2x) No man. override, no air bleed, Deutsch
EC, ECS	50	393000K813	Seal kit PVC25	56, 57, 58
2,0	55A/55B	6760090	Pilot orifice ø2.0, 9 spots	61(5x)
1,5	55A/55B	6760089	Pilot orifice ø1.5, 8 spots	61(5x)
1,4	55A/55B	6760088	Pilot orifice ø1.4, 7 spots	61(5x)
1,3	55A/55B	6760087	Pilot orifice ø1.3, 6 spots	61(5x)
1,2	55A/55B	6760086	Pilot orifice ø1.2, 5 spots	61(5x)
1,1	55A/55B	6760085	Pilot orifice ø1.1, 4 spots	61(5x)
1,0	55A/55B	6760084	Pilot orifice ø1.0, 3 spots	61(5x)
0,9	55A/55B	6760083	Pilot orifice ø0.9, 10 spots	61(5x)
0,8	55A/55B	6760082	Pilot orifice ø0.8, 2 spots	61(5x)
0,7	55A/55B	6760081	Pilot orifice ø0.7, 12 spots	61(5x)
0,6	55A/55B	6760080	Pilot orifice ø0.6, 1 spot	61(5x)
EC, ECS + MG	50 + 04	6760554	**Cap kit EC, ECS, B-side, BSP	69, 73(2x), 85(2x), 87, 88
EC, ECS + MU, UU	50 + 04	6760556	**Cap kit EC, ECS, B-side, UNF	69, 73(2x), 85(2x), 87, 88
EC, ECS + MG	50 + 04	6760224	Seal kit EC, ECS, BSP	63, 64(3x), 65, 69(2x), 87
EC, ECS + MU, UU	50 + 04	6760223	Seal kit EC, ECS, UNF	63, 64(3x), 65, 69(2x), 87
EC, ECS	50	9120092015	Spring kit std, (6.5-20) bar	86
A306	59	9120091052	Spring kit A306, (6.5-26) bar	86
EC, ECS + MG, MM	50 + 04	-	Plug VST11/4EDCF	69
EC, ECS + MU, UU	50 + 04	-	Plug 6HP5ON-S	69
A214 + EC, ECS	89A/89B + 50	393000K984	Blocking plug PVC25	55 [56, 57, 58], 60(2x), 61

** No possibility for spool stroke limitation (EC* spool actuators).

Broad Spool Section B72: EC, ECS, A, D, 12, 24, A214



Example:

 Pilot restriction \varnothing 1.0 mm
 Marked with three spots.

d) For new spring cap, from serial no. 1003...
 f) For new EC cap, from serial no. 1205...

For caps old style, see Appendix B.