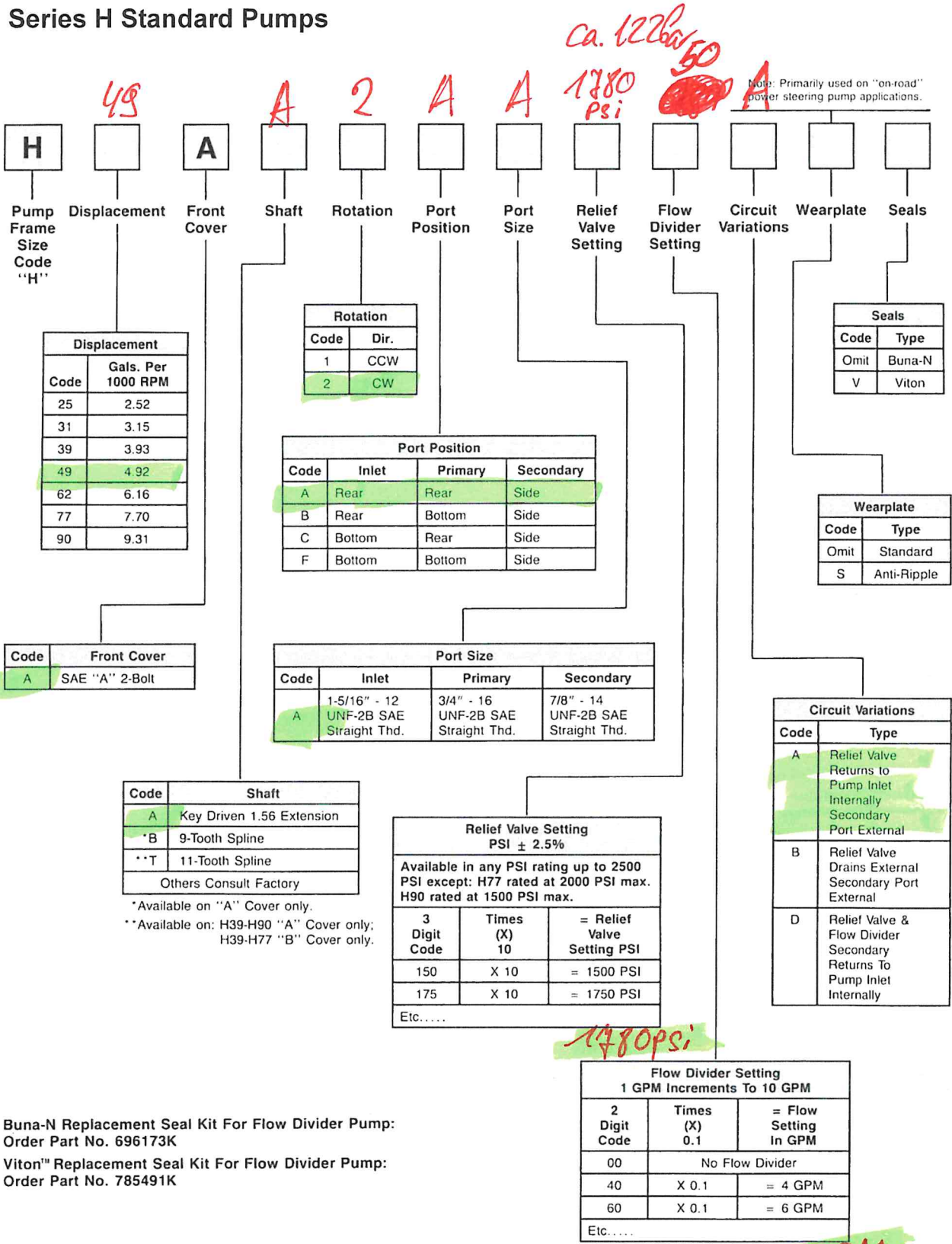


**Series H Standard Pumps**



Buna-N Replacement Seal Kit For Flow Divider Pump:  
 Order Part No. 696173K  
 Viton™ Replacement Seal Kit For Flow Divider Pump:  
 Order Part No. 785491K

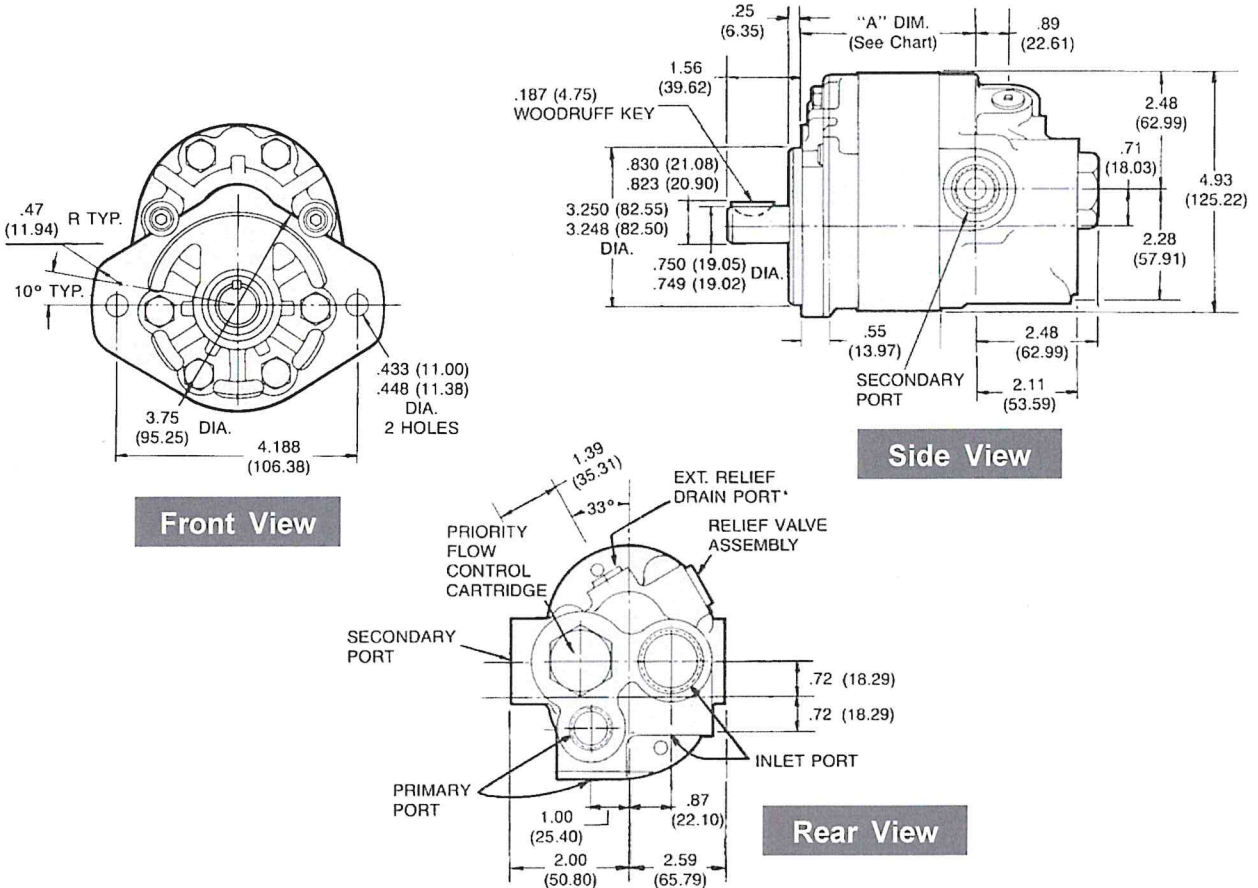


**Dimensions – 2-Bolt Mounting**

Series with built-in relief valve and flow divider

Dimensions: Inches (mm)

Clockwise rotation and "A" shaft shown  
 (Port locations reverse for CCW rotation.)

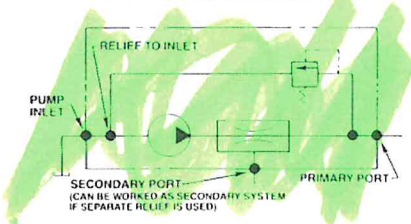


"A" Dimensions: Inches (mm)

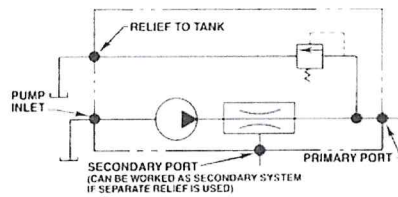
Cover	H20	H25	H31	H39	H49	H62	H77	H90
A	2.43 (61.72)	2.52 (64.01)	2.64 (67.06)	2.77 (70.36)	2.95 (74.93)	3.18 (80.77)	3.45 (87.63)	3.75 (95.25)

**Circuit Variations**

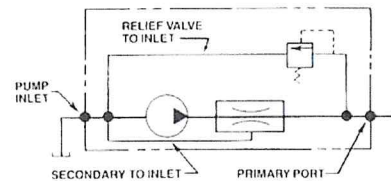
"A" Circuit Schematic



"B" Circuit Schematic\*



"D" Circuit Schematic\*



\*NOTE: "D" Circuit: Relief valve flow and flow divider secondary flow return to pump inlet internally - primarily used in "on-road" equipment power steering. Relief drain port for "B" variation 9/16"-18 UNF-2B SAE Straight Thread.