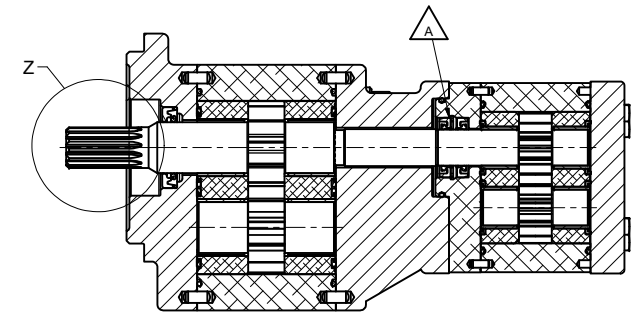
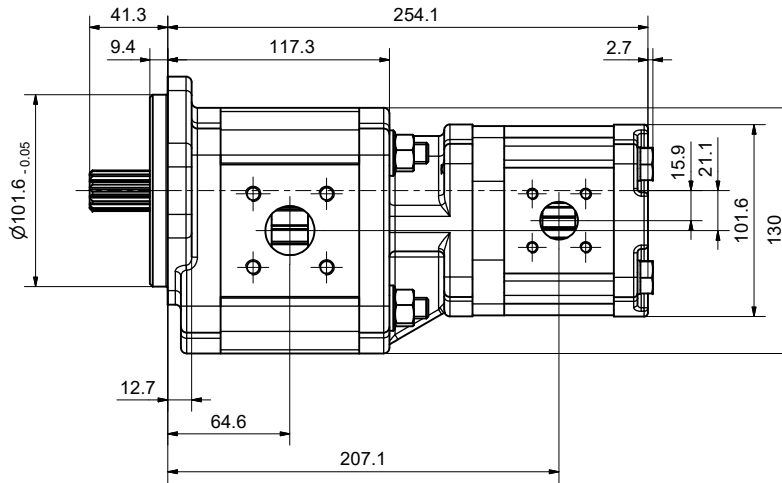
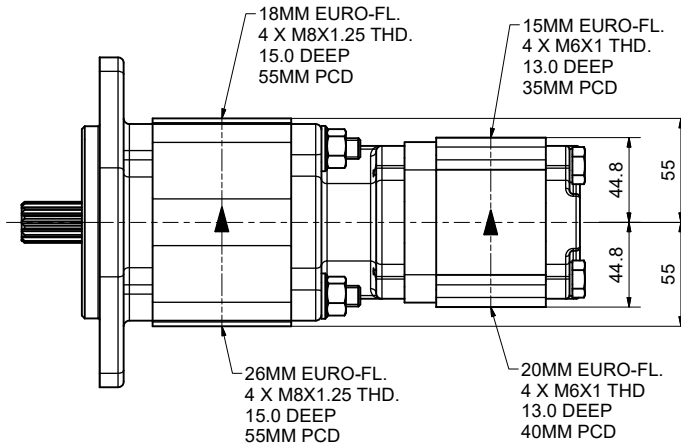
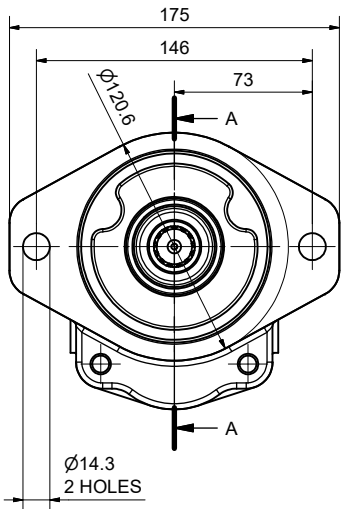
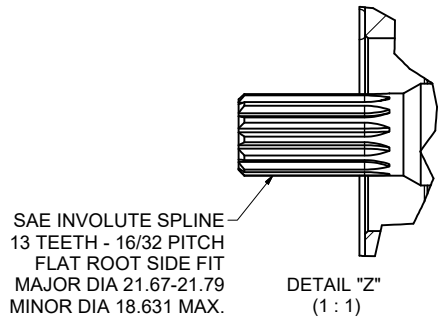


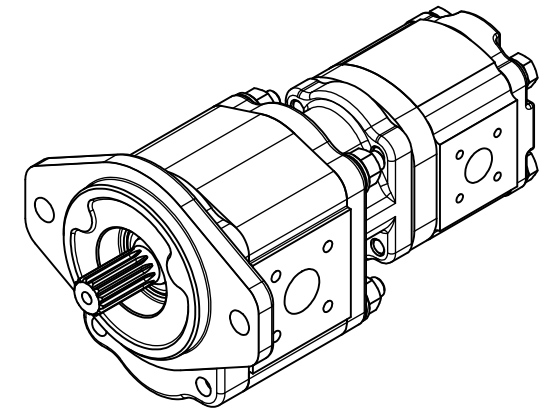
PUMP DATA		PUMP I	PUMP II
DISPLACEMENT	19 ccm	11 ccm	
MAXIMUM PRESSURE	250 bar	250 bar	
SPEED RATE	500 TO 3300 rpm		
MAX. INPUT SHAFT TORQUE	345 Nm		
ROTATION	ANTI-CLOCKWISE		



SECTION A-A

NOTE:
1 FOR ASSEMBLY INSTRUCTIONS, SEE dwg. "517-B1 & 511-B1"
"PGP517 & PGP511 ASSEMBLY INSTRUCTIONS".

2 NAMEPLATE LOCATION MAY VARY DUE TO DESIGN
CRITERIA OR MANUFACTURING LOCATION



A	RE-ACTIVATED WITH UPDATE AND CHANGE FROM LIP SEAL "V" TO "W" IN SECOND SECTION	01.10.2018	JS
REV	DESCRIPTION	DATE	ENGINEER
Parker PARKER HANNIFIN CORPORATION PUMP AND MOTOR DIVISION EUROPE Neefstraße 96 Chemnitz 09116			
DESCRIPTION PGP517B0190AD1H3VJ9J8S-511A0110WJ7J5B1B1			
ECO	DRAWN BY JS016145	DATE 01.10.2018	Material
ECO-0262391	CHECKED BY TV	APPROVED BY JS	
01.10.2018	UNITS MM	MASS 12,0 kg	DRAWING NO. 3339522066
ISO ANGLE DEGREE	UNITS MM	MASS 12,0 kg	REV. A
SHEET 1 OF 1	SCALE 1:2		

SEWR-NR: 18-10-902
TOLERANCES UNLESS OTHERWISE SPECIFIED = REF. DIMENSIONS

THIS DOCUMENT AND THE INFORMATION IT CONTAINS IS CONFIDENTIAL AND PROPRIETARY TO PARKER HANNIFIN CORPORATION AND ITS AFFILIATES ("PARKER"). MAY NOT BE COPIED OR DISCLOSED TO OTHERS OR USED FOR ANY PURPOSE OTHER THAN THAT FOR WHICH IT WAS PROVIDED. PARKER HANNIFIN CORPORATION AND ITS AFFILIATES SHALL BE RESPONSIBLE FOR THE PROTECTION OF THIS DOCUMENT. IT IS ADVISED THAT IMPROPER SELECTION OR IMPROPER USE OF PARKER SYSTEMS OR COMPONENTS CAN CAUSE DEATH, PERSONAL INJURY AND PROPERTY DAMAGE, AND IS SOLELY RESPONSIBLE TO PROTECT YOUR OWN USE AND TESTING FOR THE FINAL SELECTION OF PARKER SYSTEMS AND COMPONENTS AND ASSURING THAT ALL PERFORMANCE, DURABILITY, MAINTENANCE, SAFETY AND WARNING REQUIREMENTS OF THE INTENDED APPLICATION ARE MET. COPYRIGHT PARKER. YEAR OF COPYRIGHT IS THE YEAR(S) INDICATED ON THIS DOCUMENT. ALL RIGHTS RESERVED.