



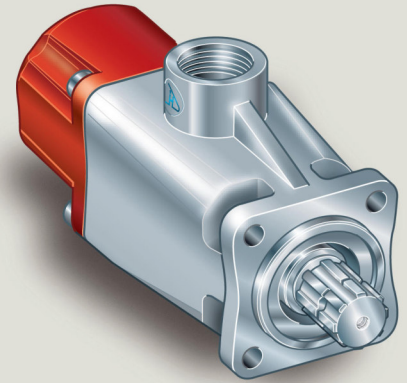
BIDIREZIONALE  
BI-ROTATIONAL

# PE

DIN  
5 4 6 2  
SE

PE 40  
PE 50  
PE 60

**Pompa a Pistoni**  
**Piston Pump**



CODICE DI ORDINAZIONE / ORDERING CODE

201 PE 040 Z SE

DIN 5462

VERSIONE/VERSION

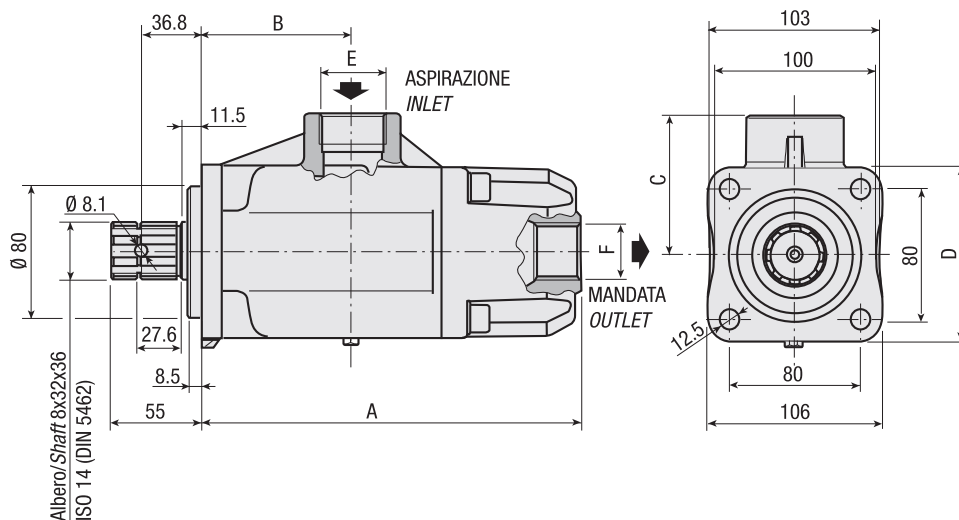
CILINDRATA/DISPLACEMENT

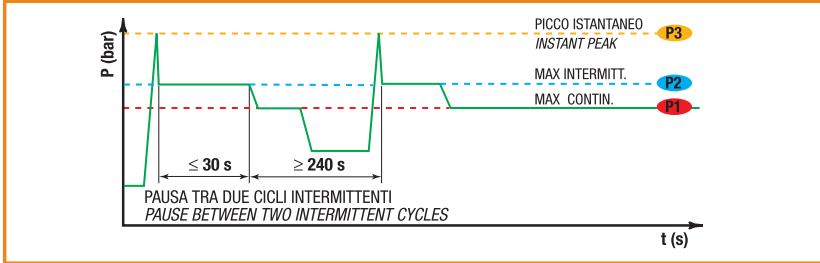
TIPO/TYPE

POMPA A PISTONI/PISTON PUMP

**CARATTERISTICHE E DATI TECNICI / SPECIFICATIONS AND TECHNICAL DATA**

| TIPO<br>TYPE | CODICE<br>CODE     | A<br>mm      | B<br>mm    | C<br>mm   | D<br>mm    | E<br>ASPIRAZIONE<br>INLET | F<br>MANDATA<br>OUTLET | PESO<br>WEIGHT<br>kg |
|--------------|--------------------|--------------|------------|-----------|------------|---------------------------|------------------------|----------------------|
| PE 40        | 201PE040ZSE        |              |            |           |            |                           |                        | 10.6                 |
| <b>PE 50</b> | <b>201PE050ZSE</b> | <b>232.5</b> | <b>945</b> | <b>85</b> | <b>106</b> | <b>1" 1/4 G</b>           | <b>1" G</b>            | <b>10.6</b>          |
| PE 60        | 201PE060ZSE        |              |            |           |            |                           |                        | 10.6                 |



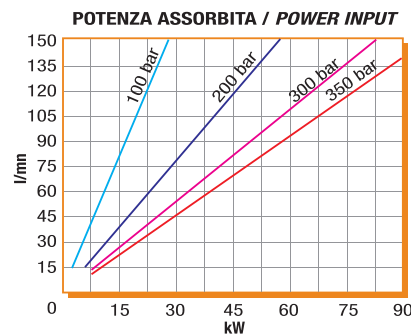
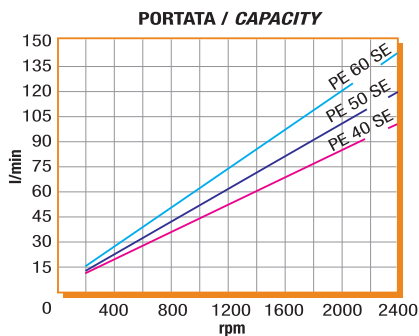
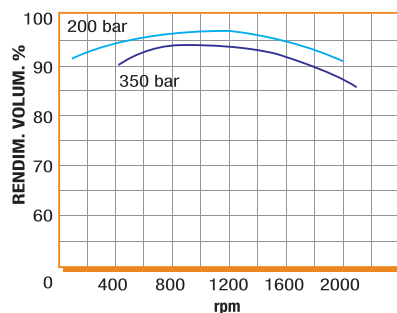
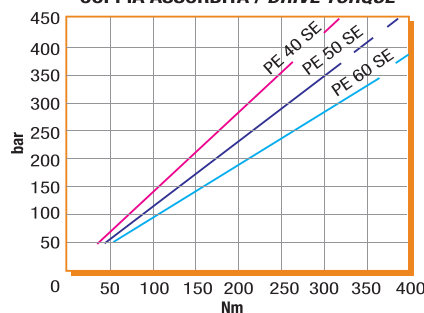
**DATI TECNICI / TECHNICAL DATA**
**ESEMPIO CICLI LAVORO / EXAMPLE OF WORKING CYCLES**


|   |                                      |
|---|--------------------------------------|
| Pressione d'aspirazione:<br>Inlet pressure:             | 0.7 ÷ 1.5 bar<br>(assoluti/absolute) |
| Campo viscosità lavoro:<br>Operating viscosity range:   | 12 ÷ 100 cSt                         |
| Temperatura fluido °C (t):<br>Fluid temperature °C (t): | -10° + 80° C                         |

| Pressione Lavoro<br>Working Press. P2 | Contaminazione / Contamination |          | Filtro / Filter<br>βx = 75 |
|---------------------------------------|--------------------------------|----------|----------------------------|
|                                       | NAS 1638                       | ISO 4406 |                            |
| ≤ 200 bar                             | 12                             | 21/18    | 40 μm                      |
| ≥ 200 bar                             | 11                             | 20/17    | 25 μm                      |

◀ **FILTRAZIONE CONSIGLIATA (ritorno o mandata)**  
**RECOMMENDED FILTERING (return or outlet)**

| TIPO / TYPE  |    |   | PE40 | PE50 | PE60 |
|--|----|---|------|------|------|
| Cilindrata<br>Displacement   | Vg | cm <sup>3</sup> /n<br>cm <sup>3</sup> /rev. | 37   | 50   | 60   |
| Pressione massima continua<br>Max continuous operating pressure                    | P1 | bar   | 330  | 330  | 290  |
| Pressione massima intermittente<br>Max intermitt. operat. press. (max 30 s)        | P2 |   | 360  | 360  | 340  |
| Pressione massima di picco<br>Max peak pressure (≤ 0.1 s)                          | P3 |   | 500  | 500  | 400  |
| Velocità massima intermittente<br>Max intermittent speed (P ≤ 20 bar)              | n3 | n/min<br>r.p.m.                             | 2400 | 2400 | 2100 |
| Velocità massima continua<br>Max continuous speed (≤ P1)                           | n1 |   | 1800 | 1800 | 1700 |
| Velocità minima intermittente<br>Min intermittent speed (≤ P2 x 0.5)<br>(max 30 s) | n4 |   | 400  | 400  | 300  |


**DIAGRAMMI / DIAGRAMS**
**RENDIMENTO VOLUMETRICO / VOLUMETRIC EFFICIENCY**

**COPPIA ASSORBITA / DRIVE TORQUE**


RILIEVI ESEGUITI CON OLIO  
 ISO VG 46 A 50° C (√= 30 cSt)  
 THE ABOVE SPECIFICATIONS  
 REFER TO OIL TYPE ISO  
 VG 46 AT 50° C (√=30 cSt)