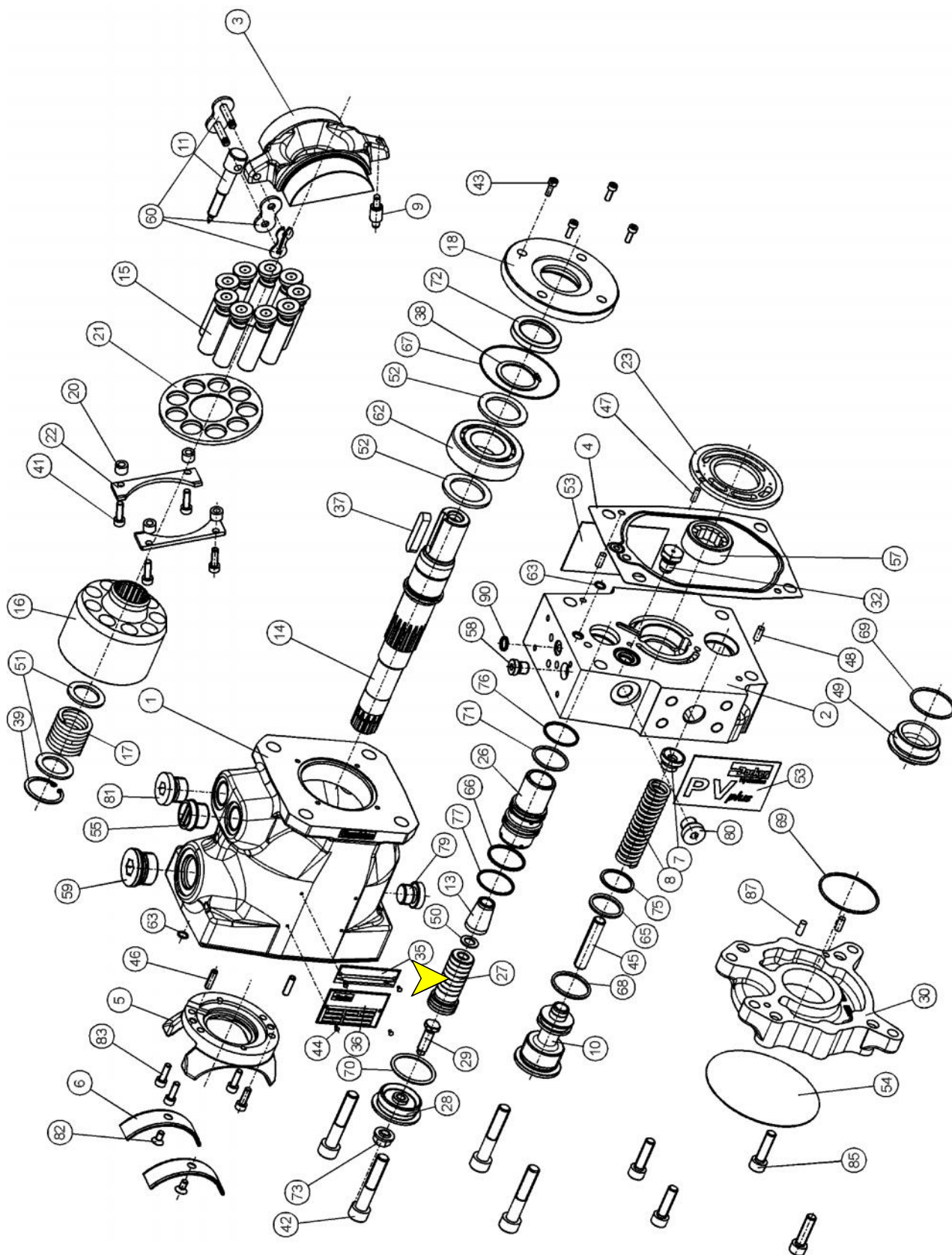


**exploded view PV frame size 1, PV016 - PV023**



 **RK-PVBG1SKS42**

<b>correlation between position numbers and replacement kits</b>			
<b>pos. No.</b>	<b>description</b>	<b>page</b>	<b>replacement kit</b>
1, 2	pump body, end cover	-	-
3	swash plate, finished	6	swashplate kit
4	body seal	4	seal kit
5	cradle	-	-
6	trunnion bearing, HX	6	trunnion bearing kit
7	spring washer, servo spring	8	servo spring kit
8	servo spring	8	servo spring kit
9	connector servo spring	6	swashplate kit
10	servo spring plug	8	servo spring kit
11	swash plate connector	6	swashplate kit
13	tapered / contour sleeve	8	tapered / contour sleeve
14	shaft	7	shaft unit
15	piston and slipper, crimped	6	rotating group, set of pistons
16	cylinder block	6	rotating group
17	retainer spring, cylinder block	6	rotating group
18	pilot cover	-	-
20	distance washer	6	rotating group
21	slipper retainer	6	rotating group
22	retainer segment	6	rotating group
23	valve plate	6	valve plate
26	servo piston sleeve	7	servo piston sleeve
27	servo piston	7	servo piston kit
28	servo piston cover	8	displacement adjuster kit
29	set screw	8	displacement limiter kit
30	thru drive adaptor	10	mounting kit, thru drive
32	air bleed valve	8	air bleed valve
35, 36	rotation indicator, name plate	-	-
37	key	7	shaft unit
38	snap ring for shaft	7	shaft unit
39	snap ring for bore	6	rotating group
41	hexagon socket head cap screw, retain	6	rotating group
42	hexagon socket head cap screw, body	6	connecting bolt kit
43	hexagon socket head cap screw, pilot	6	connecting bolt kit
44	rivet	-	-
45	guide pin, servo spring	8	servo spring kit
46	locator pin cradle	-	-
47	locator pin, valve plate	6	valve plate
48	locator pin, body	6	connecting bolt kit
49	thru drive plug	-	-
50	washer, servo piston	7	servo piston kit
51	washer, cylinder block	6	rotating group
52	washer, shaft	7	shaft unit
53, 54	magnet cover for ports, thru drive	-	-
55	protection plug, drain port	-	-
57	roller bearing, rear	7	shaft unit
58	plug, compensator interface	4	seal kit
59	plug, feedback	4	seal kit
60	chain link	6	swashplate kit
62	roller bearing, front	7	shaft unit
63 - 71	o-ring	4	seal kit
72	shaft seal	4	seal kit
73	self sealing lock nut	4, 8	seal kit, displacement limiter
75 - 77, 78	backup rings, retainer for shaft seal	4	seal kit
79 - 81	pipe plug	4	seal kit
82	hexagon socket countersunk head cap	6	trunnion bearing kit
83	hexagon socket head cap screw, cradl	-	-
84	o-ring	4	seal kit
85	hexagon socket head cap screw, thru d	10	mounting kit, thru drive
87	locator pin, thru drive adaptor	10	mounting kit, thru drive
90	o-ring	4	seal kit
91	coupling	9	mounting kit, coupling
92	adaptor for keyed shaft	9	mounting kit, coupling

pos.	qty	ordering code	description	remark
		<b>SK-</b>	<b>seal kit</b>	
		<b>PVBG1</b>	<b>PV series, frame size 1, PV016 - PV023</b>	
		<b>N</b>	<b>seal option NBR</b>	
		<b>V</b>	<b>seal option FPM</b>	
		<b>E</b>	<b>seal option EPR</b>	
		<b>P</b>	<b>seal option FPM, shaft seal PTFE (for case pressure)</b>	
		<b>W</b>	<b>seal option NBR, shaft seal PTFE (for water glycole)</b>	
		<b>1</b>	<b>threads: metric, ports: BSPP</b>	
		<b>3</b>	<b>threads: UNC, ports: UNF</b>	
		<b>7</b>	<b>threads: metric, ports: ISO 6149</b>	
		<b>8</b>	<b>threads: UNC, ports: ISO 6149</b>	
		<b>42</b>	<b>design series 42</b>	
			includes:	
4	1		body seal, frame size 1	
58	1		port plug VSTI-10x1-OR-A3C ISO 6149 NBR	seal option NBR
58	(1)		port plug VSTI-10x1-OR-A3C ISO 6149 FPM	seal option FPM
58	(1)		port plug VSTI-10x1-OR-A3C, ISO 6149 EPR	seal option EPR
59	1		port plug M 27 x 2 ISO 6149, NBR	seal option NBR
59	(1)		port plug M 27 x 2 ISO 6149, FPM	seal option FPM
59	(1)		port plug M 27 x 2 ISO 6149, EPR	seal option EPR
63	2		o-ring 2-010-N552-90; 6,07 x 1,78	seal option NBR
63	(2)		o-ring 2-010-V747-75; 6,07 x 1,78	seal option FPM
63	(2)		o-ring 2-010-E540-80; 6,07 x 1,78	seal option EPR
65	1		o-ring 2-119-N552-90; 23,47 x 2,62	seal option NBR
65	(1)		o-ring 2-119-V747-75; 23,47 x 2,62	seal option FPM
65	(1)		o-ring 2-119-E540-80; 23,47 x 2,62	seal option EPR
66	1		o-ring 2-024-N552-90; 28,30 x 1,78	seal option NBR
66	(1)		o-ring 2-024-V747-75; 28,30 x 1,78	seal option FPM
66	(1)		o-ring 2-024-E540-80; 28,30 x 1,78	seal option EPR
67	1		o-ring 2-036-N552-90; 60,05 x 1,78	seal option NBR
67	(1)		o-ring 2-036-V747-75; 60,05 x 1,78	seal option FPM
67	(1)		o-ring 2-036-E540-80; 60,05 x 1,78	seal option EPR
68	1		o-ring 2-123-N552-90; 29,82 x 2,62	seal option NBR
68	(1)		o-ring 2-123-V747-75; 29,82 x 2,62	seal option FPM
68	(1)		o-ring 2-123-E540-80; 29,82 x 2,62	seal option EPR
69	1		o-ring 2-028-N552-90; 34,65 x 1,78	seal option NBR
69	(1)		o-ring 2-028-V747-75; 34,65 x 1,78	seal option FPM
69	(1)		o-ring 2-028-E540-80; 34,65 x 1,78	seal option EPR
69	(1)		o-ring 2-134-N552-90; 47,29 x 2,62	seal option NBR
69	(1)		o-ring 2-134-V747-75; 47,29 x 2,62	seal option FPM
69	(1)		o-ring 2-134-E540-80; 47,29 x 2,62	seal option EPR
70	1		o-ring 2-125-N552-90; 32,99 x 2,62	seal option NBR
70	(1)		o-ring 2-125-V747-75; 32,99 x 2,62	seal option FPM
70	(1)		o-ring 2-125-E540-80; 32,99 x 2,62	seal option EPR
71	1		o-ring 2-023-N552-90; 26,70 x 1,78	seal option NBR
71	(1)		o-ring 2-023-V747-75; 26,70 x 1,78	seal option FPM
71	(1)		o-ring 2-023-E540-80; 26,70 x 1,78	seal option EPR
72	1		shaft seal BABSL 0,5 30 x 42 x 6-NBR	seal option NBR
72	(1)		shaft seal BABSL 0,5 30 x 42 x 6-FPM	seal option FPM
72	(1)		shaft seal PTFE, frame size 1 with EPR o-ring	seal option EPR, S
72	(1)		shaft seal PTFE, frame size 1	seal option P, W
73	1		self sealing lock nut M 8 x 1, SEAL LOCK	
75	1		backup ring 8-119-N300-90; 24,28 x 2,18	seal option NBR
75	(1)		backup ring 8-119-V709-90; 24,28 x 2,18	seal option FPM
75	(1)		backup ring 8-119-E652-90; 24,28 x 2,18	seal option EPR

pos.	qty	ordering code	description	remark
76	1		backup ring 8-023-N300-90; 27,43 x 1,35	seal option NBR
76	(1)		backup ring 8-023-V709-90; 27,43 x 1,35	seal option FPM
76	(1)		backup ring 8-023-E652-90; 27,43 x 1,35	seal option EPR
77	1		backup ring 8-024-N300-90; 29,03 x 1,35	seal option NBR
77	(1)		backup ring 8-024-V709-90; 29,03 x 1,35	seal option FPM
77	(1)		backup ring 8-024-E652-90; 29,03 x 1,35	seal option EPR
78	1		Seeger V-ring JV45, snap ring for shaft seal	
79	1		port plug VSTI R3/8" ED NBR	NBR, threads 1
79	(1)		port plug VSTI R3/8" ED FPM	FPM, threads 1
79	(1)		port plug VSTI R3/8" ED EPR	EPR, threads 1
79	(1)		port plug 8HP50NS-NBR, 3/4-16 UNF	NBR, threads 3
79	(1)		port plug 8HP50NS-FPM, 3/4-16 UNF	FPM, threads 3
79	(1)		port plug 8HP50NS-EPR, 3/4-16 UNF	EPR, threads 3
79	(1)		port plug VSTI-18 x 1,5-OR-A3C ISO 6149 NBR	NBR, threads 7, 8
79	(1)		port plug VSTI-18 x 1,5-OR-A3C ISO 6149 FPM	FPM, threads 7, 8
79	(1)		port plug VSTI-18 x 1,5-OR-A3C ISO 6149 EPR	EPR, threads 7, 8
80	1		port plug VSTI R1/4" ED NBR	NBR, threads 1
80	(1)		port plug VSTI R1/4" ED FPM	FPM, threads 1
80	(1)		port plug VSTI R1/4" ED EPR	EPR, threads 1
80	(1)		port plug 4HP50NS-NBR, 7/16-20 UNF	NBR, threads 3
80	(1)		port plug 4HP50NS-FPM, 7/16-20 UNF	FPM, threads 3
80	(1)		port plug 4HP50NS-EPR, 7/16-20 UNF	EPR, threads 3
80	(1)		port plug VSTI-12 x 1,5-OR-A3C ISO 6149 NBR	NBR, threads 7, 8
80	(1)		port plug VSTI-12 x 1,5-OR-A3C ISO 6149 FPM	FPM, threads 7, 8
80	(1)		port plug VSTI-12 x 1,5-OR-A3C ISO 6149 EPR	EPR, threads 7, 8
81	1		port plug VSTI R1/2" ED NBR	NBR, threads 1
81	(1)		port plug VSTI R1/2" ED FPM	FPM, threads 1
81	(1)		port plug VSTI R1/2" ED EPR	EPR, threads 1
81	(1)		port plug 10HP50NS-NBR, 7/8-14 UNF	NBR, threads 3
81	(1)		port plug 10HP50NS-FPM, 7/8-14 UNF	FPM, threads 3
81	(1)		port plug 10HP50NS-EPR, 7/8-14 UNF	EPR, threads 3
81	(1)		port plug VSTI-22 x 1,5-OR-A3C ISO 6149 NBR	NBR, threads 7, 8
81	(1)		port plug VSTI-22 x 1,5-OR-A3C ISO 6149 FPM	FPM, threads 7, 8
81	(1)		port plug VSTI-22 x 1,5-OR-A3C ISO 6149 EPR	EPR, threads 7, 8
84	1		o-ring 2-044-N552-90; 94,97 x 1,78	seal option NBR
84	(1)		o-ring 2-044-V747-75; 94,97 x 1,78	seal option FPM
84	(1)		o-ring 2-044-E540-80; 94,97 x 1,78	seal option EPR
84	1		o-ring 2-042-N552-90; 82,27 x 1,78	seal option NBR
84	(1)		o-ring 2-042-V747-75; 82,27 x 1,78	seal option FPM
84	(1)		o-ring 2-042-E540-80; 82,27 x 1,78	seal option EPR
84	1		o-ring 2-041-N552-90; 75,92 x 1,78	seal option NBR
84	(1)		o-ring 2-041-V747-75; 75,92 x 1,78	seal option FPM
84	(1)		o-ring 2-041-E540-80; 75,92 x 1,78	seal option EPR
84	1		o-ring 2-036-N552-90; 60,05 x 1,78	seal option NBR
84	(1)		o-ring 2-036-V747-75; 60,05 x 1,78	seal option FPM
84	(1)		o-ring 2-036-E540-80; 60,05 x 1,78	seal option EPR
84	1		o-ring 2-033-N552-90; 50,52 x 1,78	seal option NBR
84	(1)		o-ring 2-033-V747-75; 50,52 x 1,78	seal option FPM
84	(1)		o-ring 2-033-E540-80; 50,52 x 1,78	seal option EPR
90	1		o-ring 2-012-N552-90; 9,25 x 1,78	seal option NBR
90	(1)		o-ring 2-012-V747-75; 9,25 x 1,78	seal option FPM
90	(1)		o-ring 2-012-E540-80; 9,25 x 1,78	seal option EPR
261	1		o-ring 6-346-N552-90; 9,4 x 2,1	seal option NBR
261	(1)		o-ring 6-346-V747-75; 9,4 x 2,1	seal option FPM
261	(1)		o-ring 6-346-E540-80; 9,4 x 2,1	seal option EPR

pos.	qty	ordering code	description	remark
		<b>RK- PVBG1 VT M S 42</b>	<b>spare parts kit PV series, frame size 1, PV016 - PV023 conecting parts kit metric version SAE/UNC version design series 42</b> includes:	
42	4		hexagon socket head cap screw M 10 x 55 DIN 912 12.9	threads M
42	(4)		hexagon socket head cap screw 3/8" - 16 UNC x 2 1/4"	threads S
43	4		hexagon socket head cap screw M 5 x 12 DIN 912 12.9	threads M
43	(4)		hexagon socket head cap screw Nr. 10 - 24 UNC x 1/2"	threads S
48	2		locating pin 5 M6 x 12 DIN 7 St	
		<b>RK- PVBG1 GLE 42</b>	<b>spare parts kit PV series, frame size 1, PV016 - PV023 trunnion bearing kit design series 42</b> includes:	
6	2		trunnion bearing HX, frame size 1	
82	2		hexagon socket countersunk head cap screw M 5 x 10 DIN 7991,	
		<b>RK- PVBG1 ROG 42</b>	<b>spare parts kit PV series, frame size 1, PV016 - PV023 rotating group design series 42</b> includes:	
15	9		piston and slipper, crimped	
16	1		cylinder block	
17	1		retainer spring, cylinder block	
20	4		distance washer	
21	1		slipper retainer plate	
22	2		retainer segment	
39	1		snap ring for bores, 32 x 1,2 DIN 472	
41	4		hexagon socket head cap screw M 5 x 18 DIN 912 12.9 TUF	
51	2		washer SS 22 x 32 x 2 DIN 988	
		<b>RK- PVBG1 KOS 42</b>	<b>spare parts kit PV series, frame size 1, PV016 - PV023 piston and slipper set design series 42</b> includes:	
15	9		piston and slipper, crimped	
		<b>RK- PVBG1 SS R L 42</b>	<b>spare parts kit PV series, frame size 1, PV016 - PV023 valve plate rotation clockwise rotation counetr-clockwise design series 42</b> includes:	
23	1		valve plate, clockwise rotation, frame size 1	rotation R
23	(1)		valve plate, counter-clockwise rotation, frame size 1	rotation L
47	1		locating pin 4 M6 x 12 DIN 7 St	
		<b>RK- PVBG1 SRS 42</b>	<b>spare parts kit PV series, frame size 1, PV016 - PV023 swashplate kit design series 42</b> includes:	
3	1		swash plate, finished, frame size 1	
9	1		servo spring connector frame size 1	
11	1		servo piston connector frame size 1	
60	1		chain link 60 - 11 DIN 8188	

pos.	qty	ordering code	description	remark
		<b>RK- PVBG1 WP VZ M S 42</b>	<b>spare parts kit PV series, frame size 1, PV016 - PV023 shaft unit, keyed shaft unit, splined metric version SAE/UNC version design series 42</b> includes:	
14	1		shaft, keyed, metric, frame size 1	keyed, metric
14	(1)		shaft, keyed, SAE, frame size 1	keyed, SAE
14	(1)		shaft, splined, metric, frame size 1	splined, metric
14	(1)		shaft, splined, SAE, frame size 1	splined, SAE
37	1		key A8 x 7 x 40 DIN 6885 St	keyed, metric
37	(1)		key 6,35 x 6,35 x 38	keyed, SAE
38	1		snap ring for shaft, 30 x 1,5 DIN 471	
52	2		washer SS 30 x 42 x 2,5 DIN 988	
57	1		roller bearing, NU - 2203 - EC	
62	1		roller bearing NUP - 206 - EC	
		<b>RK- PV016 PV020 PV023 HE N V E 42</b>	<b>spare parts kit PV series, frame size 1, PV016 PV series, frame size 1, PV020 PV series, frame size 1, PV023 volume stop, adjustable seal option NBR seal option FPM seal option EPR design series 42</b> includes:	
28	1		servo piston cover M 36 x 2	
29	1		set screw M 8 x 1, displacement 16 cm <sup>3</sup> /U	displacement 016
29	(1)		set screw M 8 x 1, displacement 20 cm <sup>3</sup> /U	displacement 020
29	(1)		set screw M 8 x 1, displacement 23 cm <sup>3</sup> /U	displacement 023
70	1		o-ring 2-125-N552-90; 32,99 x 2,62	seal option NBR
70	(1)		o-ring 2-125-V747-75; 32,99 x 2,62	seal option FPM
70	(1)		o-ring 2-125-E540-80; 32,99 x 2,62	seal option EPR
73	1		self sealing lock nut M 8 x 1, SEAL LOCK	
		<b>RK- PVBG1 SB N V E 42</b>	<b>spare parts kit PV series, frame size 1, PV016 - PV023 servo piston sleeve seal option NBR seal option FPM seal option EPR design series 42</b> includes:	
26	1		servo piston sleeve frame size 1	
66	1		o-ring 2-024-N552-90; 28,30 x 1,78	seal option NBR
66	(1)		o-ring 2-024-V747-75; 28,30 x 1,78	seal option FPM
66	(1)		o-ring 2-024-E540-80; 28,30 x 1,78	seal option EPR
71	1		o-ring 2-023-N552-90; 26,70 x 1,78	seal option NBR
71	(1)		o-ring 2-023-V747-75; 26,70 x 1,78	seal option FPM
71	(1)		o-ring 2-023-E540-80; 26,70 x 1,78	seal option EPR
76	1		backup ring 8-023-N300-90; 27,43 x 1,35	seal option NBR
76	(1)		backup ring 8-023-V709-90; 27,43 x 1,35	seal option FPM
76	(1)		backup ring 8-023-E652-90; 27,43 x 1,35	seal option EPR
77	1		backup ring 8-024-N300-90; 29,03 x 1,35	seal option NBR
77	(1)		backup ring 8-024-V709-90; 29,03 x 1,35	seal option FPM
77	(1)		backup ring 8-024-E652-90; 29,03 x 1,35	seal option EPR

pos.	qty	ordering code	description	remark
		<b>RK-</b> <b>PVBG1</b> <b>SKS</b> <b>42</b>	<b>spare parts kit</b> <b>PV series, frame size 1, PV016</b> <b>servo piston kit</b> <b>design series 42</b> includes:	
27	1		servo piston frame size 1	
50	1		washer PS 9 x 15 x 1 DIN 988	
		<b>RK-</b> <b>PVBG1</b> <b>RFS</b> <b>42</b>	<b>spare parts kit</b> <b>PV series, frame size 1, PV016 - PV023</b> <b>Rückstellfeder-Satz</b> <b>design series 42</b> includes:	
7	1		spring washer, servo spring frame size 1	
8	1		servo spring frame size 1	
10	1		spring cover frame size 1	
45	1		locating pin Connex LS 10 x 50, 1.8159, VSM 1278	
32		<b>RK-</b> <b>PV000</b> <b>EV</b> <b>N</b> <b>V</b> <b>E</b> <b>40</b>	<b>spare parts kit</b> <b>PV series, alle frame sizen</b> <b>air bleed valve</b> <b>seal option NBR</b> <b>seal option FPM</b> <b>seal option EPR</b> <b>design series 40 - 42</b> includes:	
260	1		body, air bleed valve	
261	1		o-ring 6-346-N552-90; 9,4 x 2,1	seal option NBR
261	(1)		o-ring 6-346-V747-75; 9,4 x 2,1	seal option FPM
261	(1)		o-ring 6-346-E540-80; 9,4 x 2,1	seal option EPR
262	1		spring, air bleed valve	
263	1		ball Ø 6,35, tungston carbide, class G20	
264	1		roll pin, 2 x 10 DIN 1481	
13		<b>RK-</b> <b>PVBG1</b> <b>KH</b> <b>0</b> <b>B</b> <b>C</b> <b>D</b> <b>E</b> <b>G</b> <b>42</b>	<b>spare parts kit</b> <b>PV series, frame size 1, PV016 - PV023</b> <b>tapered / contour sleeve</b> <b>tapered sleeve for standard pumps</b> <b>contour sleeve for horse power comp. pumps, 3 kW</b> <b>contour sleeve for horse power comp. pumps, 4 kW</b> <b>contour sleeve for horse power comp. pumps, 5,5 kW</b> <b>contour sleeve for horse power comp. pumps, 7,5 kW</b> <b>contour sleeve for horse power comp. pumps, 11 kW</b> <b>design series 42</b> includes:	
13	1		tapered sleeve frame size 1	
13	(1)		contour sleeve frame size 1, 3 kW	horse power code B
13	(1)		contour sleeve frame size 1, 4 kW	horse power code C
13	(1)		contour sleeve frame size 1, 5,5 kW	horse power code D
13	(1)		contour sleeve frame size 1, 7,5 kW	horse power code E
13	(1)		contour sleeve frame size 1, 11 kW	horse power code G