

Hydraulic Motors M3 - M4 Series

Denison Vane Technology, fixed displacement



ENGINEERING YOUR SUCCESS.

M4D - 062 - 3 N 00 - B 5 02

-M4D1
M4D --- 138 --- 1 --- N --- 00 --- B --- 1 --- 02 ..

Model No.

M4D - Series external drain

M4D1 Series internal drain

Torque

062 = 1,04 Nm/bar

074 = 1,22 Nm/bar

088 = 1,45 Nm/bar

102 = 1,68 Nm/bar

113 = 1,86 Nm/bar

128 = 2,11 Nm/bar

138 = 2,30 Nm/bar

Type of shaft

1 = keyed (SAE C)

3 = splined (SAE C)

Direction of rotation (shaft end view)

N = bi-directional

Modifications

Ports

01 = SAE threaded port

SAE drain

02 = 4 bolt SAE flange with UNC threads
SAE drain

M4 = 4 bolt SAE flange with Metric threads

BSPP drain

Seal class

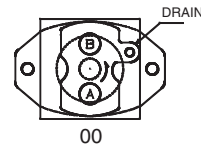
1 = S1 - BUNA N

5 = S5 - VITON®

Design letter

Porting combination

00 = standard

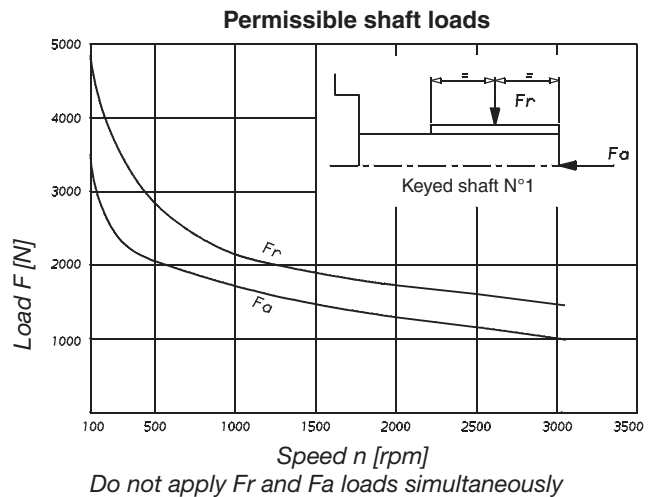
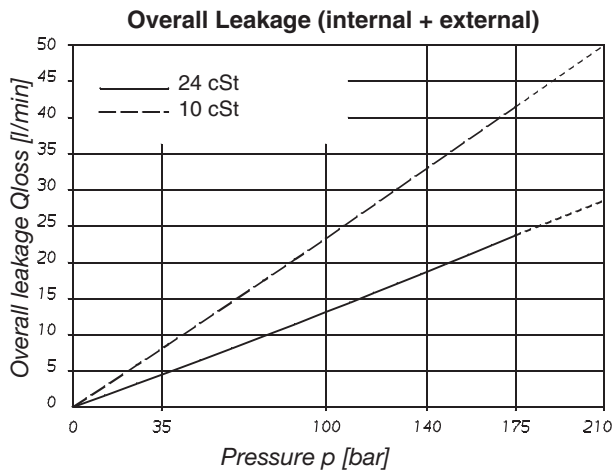


M4D1 : Drain port is plugged.

CW rotation => A = inlet B = outlet
CCW rotation => B = inlet A = outlet

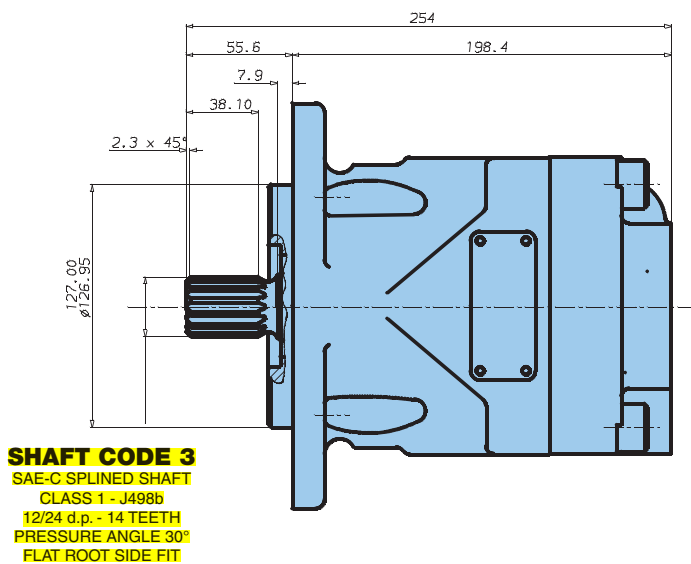
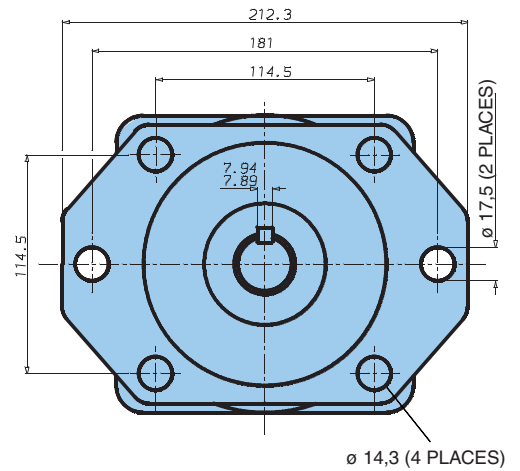
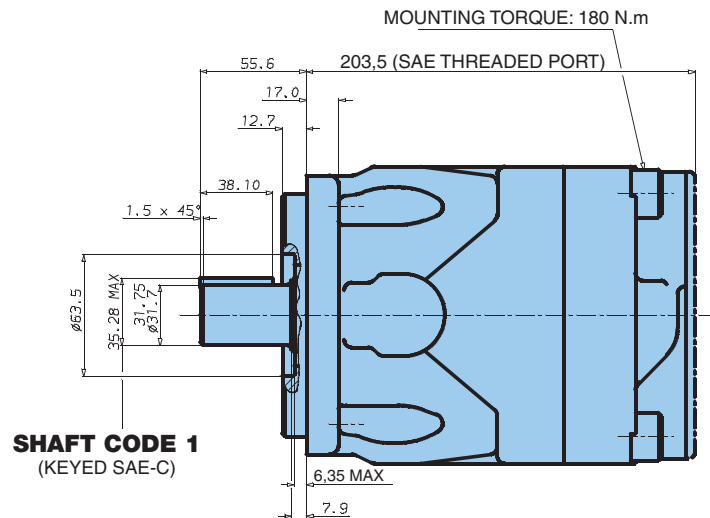
Operating Characteristics - Typical [24 cSt]

Model	V _i Volumetric displacement cm ³ /rev.	Input flow at n = 2000 rpm		Torque T at n = 2000 rpm	Power output at n = 2000 rpm
		Theoretical	at 175 bar Δ p	at 175 bar Δ p	at 175 bar Δ p
		l/min	l/min	Nm	kW
M4D 062	65,1	130,0	154,0	165,0	34,6
M4D 074	76,8	154,0	178,0	200,0	41,9
M4D 088	91,0	182,0	206,0	236,0	49,4
M4D 102	105,5	211,0	241,0	264,0	55,3
M4D 113	116,7	233,0	257,0	300,0	62,8
M4D 128	132,4	265,0	289,0	340,0	71,2
M4D 138	144,4	289,0	313,0	372,0	77,9



M4D - M4D1 motor

Weight : 27,0 kg



7/16"-14 UNC x 22 DEEP - 8 HOLES
 (M12 x 22,1 DEEP-METRIC VERSION)

