

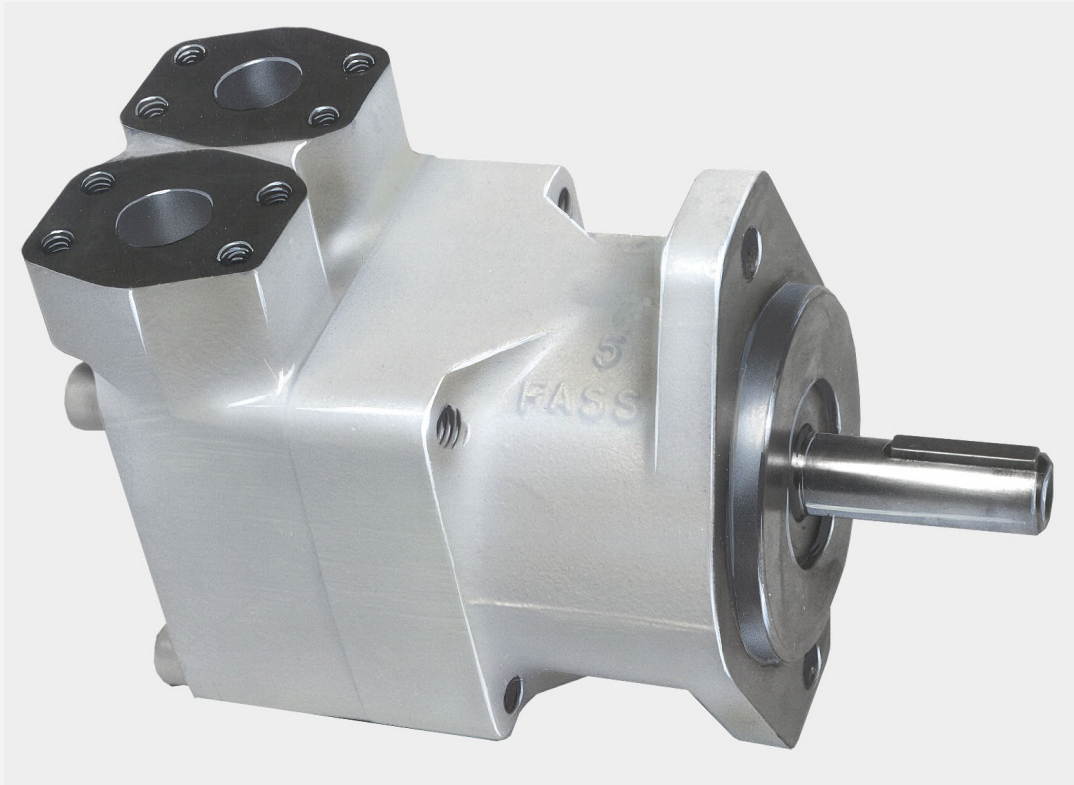
DENISON HYDRAULICS M4C - M4SC - M4C1 - M4SC1

vane-type motor / Flügelzellen Motor

moteur à palettes / motore a palette

motore de paletas

service information



Publ. S2 - ML1501 - C

03 / 2003 / FB

Replace : S2 - ML1501 - B

L25 - 21501 - 3

DENISON | **Hydraulics**

[Back To The Table Of Content](#)

Item Pos. Ref. Pos. Pos.	Description <i>Descrizione</i>	Benennung <i>Descripcion</i>	Description		Part N° Teil Nr. Code N° Cod. N° Referencia M4C - M4C1	Part N° Teil Nr. Code N° Cod. N° Referencia M4SC - M4SC1	Qty Stück Qté Qtá Cant.
27	Plug (M4C1 - M4SC1) <i>Tappo (M4C1 - M4SC1)</i>	Stopfen (M4C1 - M4SC1) <i>Tapon (M4C1 - M4SC1)</i>	Bouchon (M4C1 - M4SC1)	L...P U...X	431.90600	431.90600	1
	REPAIR KIT KIT DI RICAMBIO	AUSTAUSCH-BAUGRUPPEN CONJUNTO REPARACION	POCHETTES RECHANGES				
A	Kit 024 <i>Cartuccia 024</i>	Pumpeneinsatz 024 <i>Juego 024</i>	Cartouche 024		S14.45081	S14.45082	1
A	Kit 027 <i>Cartuccia 027</i>	Pumpeneinsatz 027 <i>Juego 027</i>	Cartouche 027		S24.64040	S24.63668	1
A	Kit 031 <i>Cartucia 031</i>	Pumpeneinsatz 031 <i>Juego 031</i>	Cartouche 031		S14.27027	S14.27031	1
A	Kit 043 <i>Cartuccia 043</i>	Pumpeneinsatz 043 <i>Juego 043</i>	Cartouche 043		S14.27028	S14.27032	1
A	Kit 055 <i>Cartuccia 055</i>	Pumpeneinsatz 055 <i>Juego 055</i>	Cartouche 055		S14.27029	S14.27033	1
A	Kit 067 <i>Cartuccia 067</i>	Pumpeneinsatz 067 <i>Juego 067</i>	Cartouche 067		S14.27030	S14.27034	1
A	Kit 075 <i>Cartuccia 075</i>	Pumpeneinsatz 075 <i>Juego 075</i>	Cartouche 075		S14.41505	S24.10890	1
B	Shaft and bearing ass'y (code 1) <i>Ins. albero (codice 1)</i>	Baugruppe (Welle u. Lager) (Typ 1) <i>Conjunto eje (codigo 1)</i>	Arbre à clavette et roulement ass. (code 1)		S14.27026	S14.27026	1
C	Shaft and bearing ass'y (code 2) <i>Ins. albero (codice 2)</i>	Baugruppe (Welle u. Lager) (Typ 2) <i>Conjunto eje (codigo 2)</i>	Arbre à clavette et roulement ass. (code 2)		S14.41575	S14.41575	1
D	Shaft and bearing ass'y (code 3) <i>Ins. albero (codice 3)</i>	Baugruppe (Welle u. Lager) (Typ 3) <i>Conjunto eje (codigo 3)</i>	Arbre à cannelures et roulement ass. (code 3)		S14.44482	S14.44482	1
E	Seal kit (S1) (M4C - M4C1) <i>Serie guarnizioni (S1) (M4C - M4C1)</i>	Dichtringsatz (S1) (M4C - M4C1) <i>Juego de juntas (S1) (M4C - M4C1)</i>	Pochette de joints (S1) (M4C - M4C1)		S14.29879		1
	Seal kit (S5) (M4SC - M4SC1) <i>Serie guarnizioni (S5) (M4SC - M4SC1)</i>	Dichtringsatz (S5) (M4SC - M4SC1) <i>Juego de juntas (S5) (M4SC - M4SC1)</i>	Pochette de joints (S5) (M4SC - M4SC1)			S14.29879.5	1
F	Port plate-pressure ass'y <i>Ins. piatto distributore anter.</i>	Steuerplatte <i>Conjunto plato dist.</i>	Plaque pression ass.		S14.29880	S14.29880	1
	End cap ass'y rear ported <i>Ins. coperchio bocche posteriori</i>	Gehäuse baugruppe axiale Anschlüsse <i>Conjunto bocas en tapa trasera</i>	Chapeau arrière ass. orifices arrières				
G	4-bolts UNC (SAE drain) (M4C - M4SC) <i>UNC 4 fori (drenaggio SAE) (M4C - M4SC)</i>	UNC Flansch (SAE Leckölanschluß) (M4C - M4SC) <i>UNC 4 agujeros (drenaje SAE) (M4C - M4SC)</i>	4 trous UNC (drain SAE) (M4C - M4SC)		S14.27035	S14.27035	1
H	SAE thd. port (SAE drain) (M4C - M4SC) <i>Filettature SAE (drenaggio SAE) (M4C - M4SC)</i>	SAE Gewinde (SAE Leckölanschluß) (M4C - M4SC) <i>Rosca SAE (drenaje SAE) (M4C - M4SC)</i>	Orifice taraudé SAE (drain SAE) (M4C - M4SC)		S14.27036	S14.27036	1
J	4-bolts UNC (BSPP drain) (M4C - M4SC) <i>UNC 4 fori (drenaggio BSP) (M4C - M4SC)</i>	UNC Flansch (R Leckölanschluß) (M4C - M4SC) <i>UNC 4 agujeros (drenaje BSP) (M4C - M4SC)</i>	4 trous UNC (drain BSPP) (M4C - M4SC)		S14.83314	S14.83314	1
K	4-bolts Metric (BSPP drain) (M4C - M4SC) <i>Metrica 4 fori (drenaggio BSP) (M4C - M4SC)</i>	Metrisch Flansch (R Leckölanschluß) (M4C - M4SC) <i>Metrico 4 agujeros (drenaje BSP) (M4C - M4SC)</i>	4 trous métriques (drain BSPP) (M4C - M4SC)		S14.97209	S14.97209	1
L	4-bolts UNC (SAE drain) (M4C1 - M4SC1) <i>UNC 4 fori (drenaggio SAE) (M4C1 - M4SC1)</i>	UNC Flansch (SAE Leckölanschluß) (M4C1 - M4SC1) <i>UNC 4 agujeros (drenaje SAE) (M4C1 - M4SC1)</i>	4 trous UNC (drain SAE) (M4C1 - M4SC1)		S14.27037	S14.27037	1
M	SAE thd. port (SAE drain) (M4C1 - M4SC1) <i>Filettature SAE (drenaggio SAE) (M4C1 - M4SC1)</i>	SAE Gewinde (SAE Leckölanschluß) (M4C1 - M4SC1) <i>Rosca SAE (drenaje SAE) (M4C1 - M4SC1)</i>	Orifice taraudé SAE (drain SAE) (M4C1 - M4SC1)		S14.27038	S14.27038	1