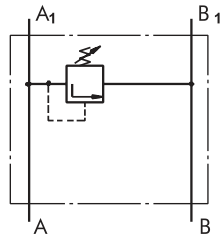
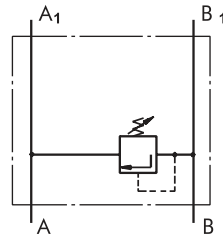


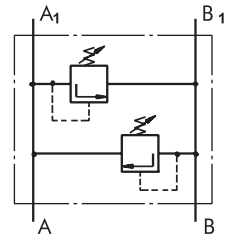
CROSSOVER RELIEF VALVES



Single Crossover Relief Valve type KPE ...



Single Crossover Relief Valve type KPE ...



Dual Crossover Relief Valve type KPD ...

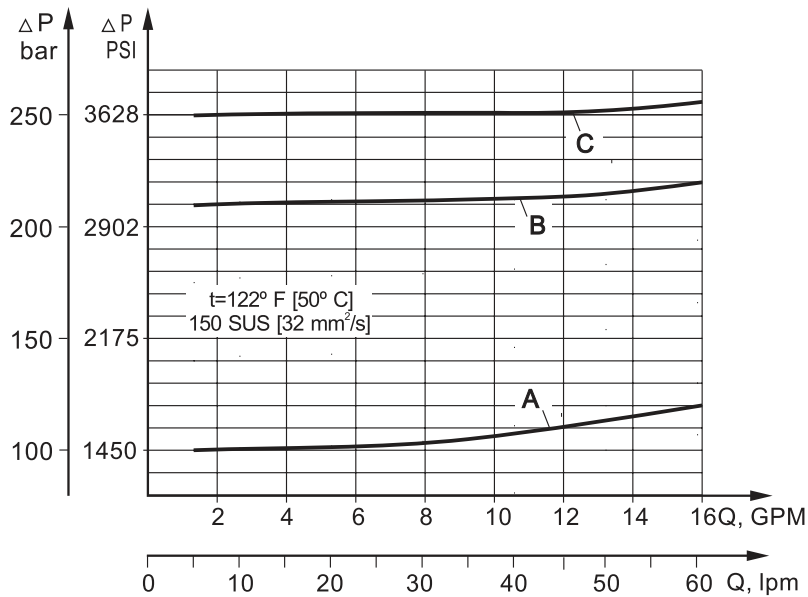
SPECIFICATION DATA

Parameters	Type			
	KPER	KPDR	KPES	KPDS
Flow Rate , GPM [lpm]	15.85 [60]			
Pressure Range* , PSI [bar]	435÷1450; [30 ÷ 100];	725÷3050; [50 ÷ 210];	1160÷4350 [80 ÷ 300]	
Weight , lb [kg]	3.42 [1,55]		3.31 [1,50]	

*Pressure Settings are at flow rate of 1.32 GPM [5 lpm] and viscosity 150 SUS [32 mm²/s] (122° F [50 °C]).

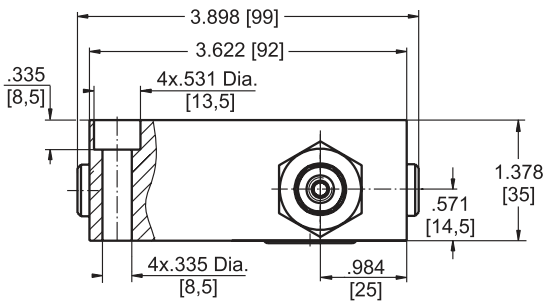
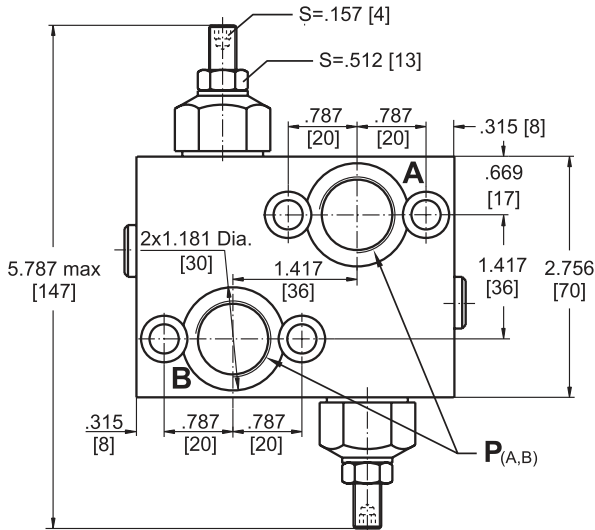
Rated Pressure

- A → 1450 PSI [100 bar]
- B → 3050 PSI [210 bar]
- C → 3625 PSI [250 bar]

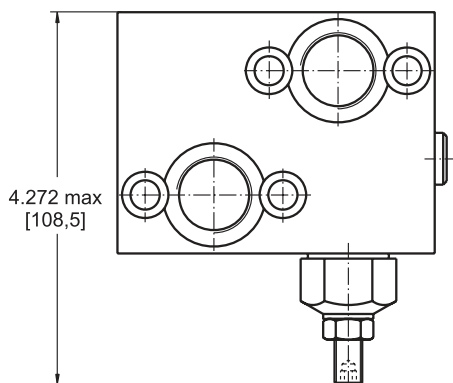


**VALVES FOR MLHP, MLHR, MLHH
HYDRAULIC MOTORS**

DUAL VALVE KPDR

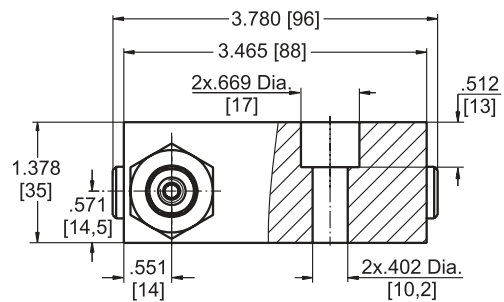
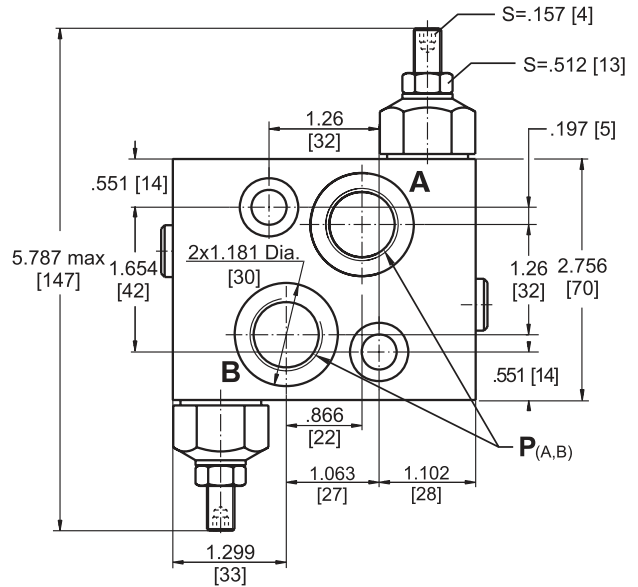


SINGLE VALVE KPER

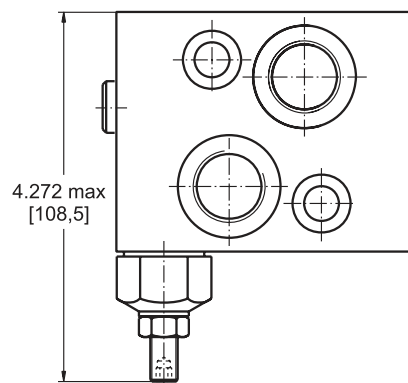


**VALVES FOR MLHS
HYDRAULIC MOTORS**

DUAL VALVE KPDS



SINGLE VALVE KPES



	Thread Ports - P _(A,B)
-	G1/2 .79 [20] depth
M	M22x1,5 .79 [20] depth
A	7/8 - 14 UNF O-ring .79 [20] depth

Note : **KPDR** and **KPER** Blocks are installed directly on MLHP, MLHR and MLHH Motors with four screws M8x35 - 8.8 DIN 912 or 5/16-18 UNC, 1.5 long ANSI B 18.3 . Tightening torque 160 lb-in [1,8 daNm].
KPDS and **KPES** Blocks are installed directly on MLHS Motors with two screws M10x35 - 8.8 DIN 912 or 3/8-16 UNC, 1.5 long ANSI B 18.3 . Tightening torque 310 lb-in [3,5 daNm].