

SPECIFICATIONS NOTES:

1. OPERATIONAL ANGLES:

⊗ X AXIS	<u>2.0</u>
⊗ Y AXIS	<u>2.0</u>

2. ON DELAY (TRIGGER) SECONDS 1.0

3. OFF DELAY (RESET) SECONDS 0

4. OPERATING VOLTAGE (DC ONLY) B+: 9-30 VDC

OUTPUT AT LEVEL	VOLTAGE <u>B+</u>	RELAY <u>CLOSED</u>
OUTPUT AT OP. ANGLE	<u>OPEN</u>	<u>OPEN</u>

5. LED FUNCTIONS:

YELLOW ON AT OP. ANGLE
RED ON UNTIL OUTPUT SWITCHES

6. RETAINER RING COLOR WHITE

7. WIRE COLORS:

BATT+(B+)	<u>RED</u>
OUTPUT	<u>WHITE</u>
GND-	<u>BLACK</u>

8. TERMINATION:

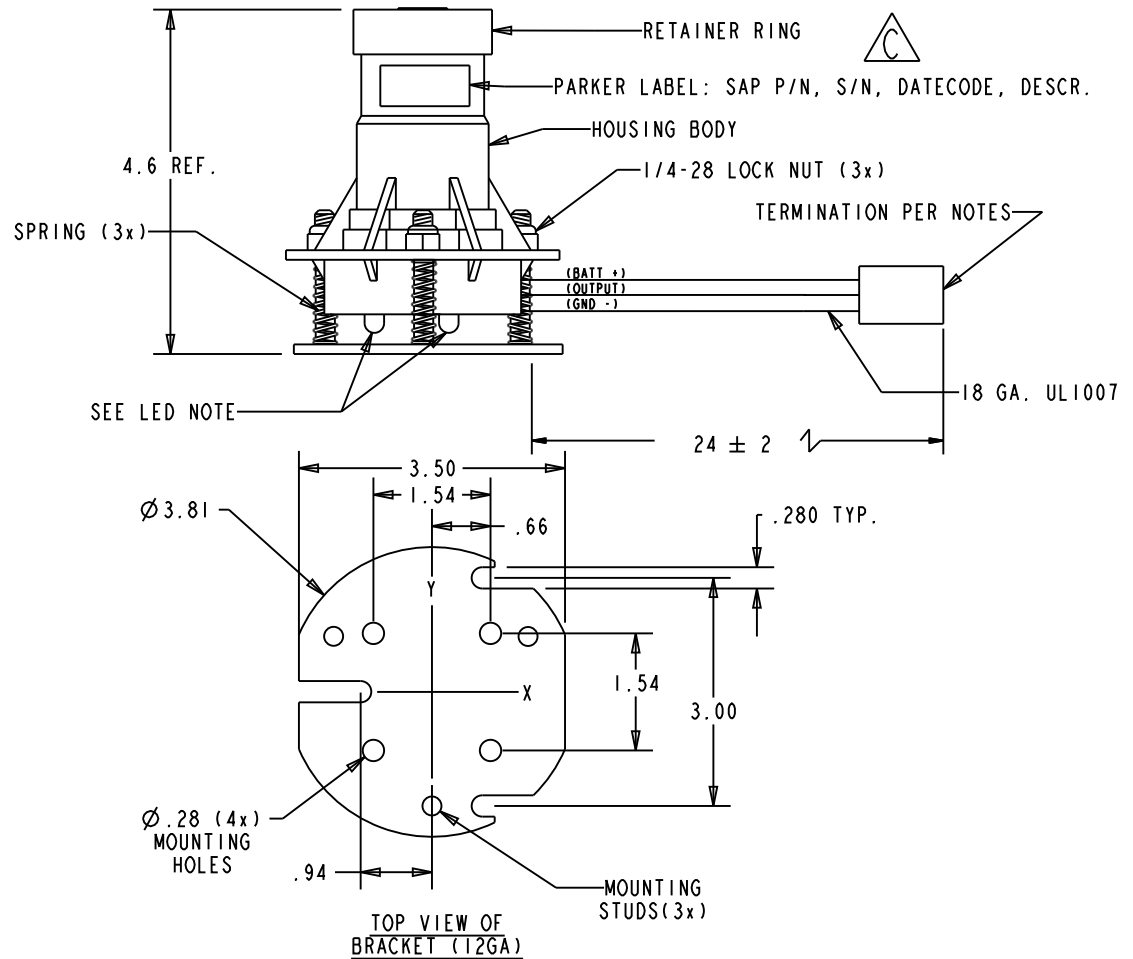
<u>X</u> NONE, STRIP LENGTH	<u>.25</u>
<u>N/A</u> INDIVIDUAL TERMINALS	<u>N/A</u>
<u>N/A</u> CONNECTOR	<u>N/A</u>
PIN 1 OR A	<u>N/A</u>
PIN 2 OR B	<u>N/A</u>
PIN 3 OR C	<u>N/A</u>

9. WITHSTAND A MECHANICAL DROP OF ONE METER.

10. TEMP RANGE: -40°C TO 85°C

11. BRACKET STYLE:	<u>1002</u>	<u>1003</u>	<u>1004</u>
	<u>N/A</u>	<u>N/A</u>	<u>X</u>

REV	ECR#	DESCRIPTION	DATE	BY	APP'D
C	10923	+NEW BARCODE LABEL	07-17-2014	JMC	DEP



TOLERANCES UNLESS OTHERWISE SPECIFIED

0	± .25"
.0	± .05"
.00	± .02"
.000	± .010"
ANG	± 1°

- ⊗ - CRITICAL SYMBOL
- △ - LATEST REVISION SYMBOL
- Ⓜ - INSPECTION SYMBOL



**Electronic Controls Division
Sensor Business Unit**

	DATE: 3-7-2002	BY: LPH	CH: JDW
TOOLING REV: N/A	MATERIAL: N/A		
TITLE: VA LS60 C2.0 H1.0 12/24 (146364)			
PROJ. NO: 501	SIZE: A	DWG NO: LS60-00657	REV: C
		SHEET: 1 OF 1	