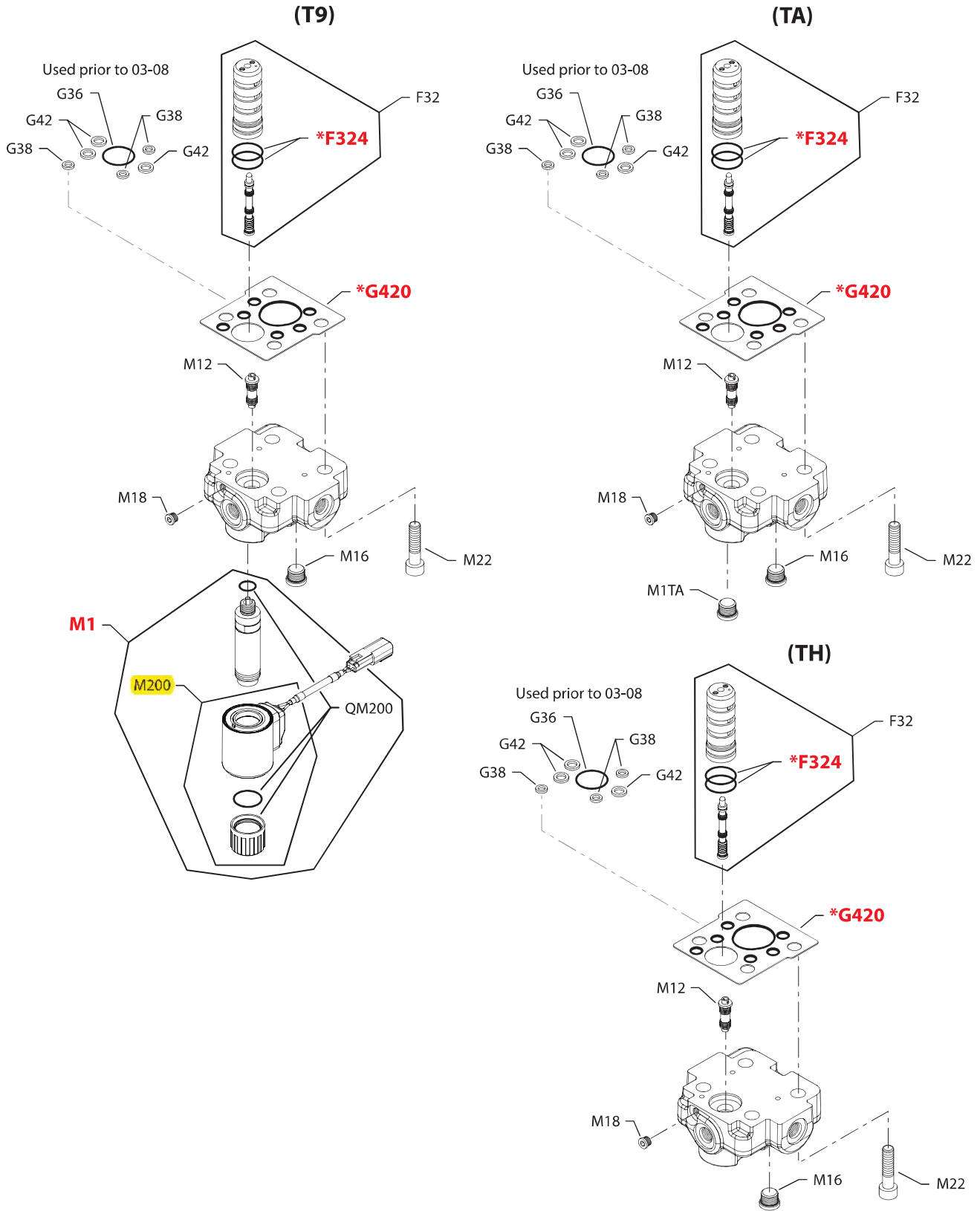



Variable Displacement Motor
Electric 2-position

Order code	Item	Date begin	Date end	Part number	Part name	Qty. per model/kit	
T1	F32	96-31		503380	4-way valve assembly	1	
	F324	96-31		730036	O-ring	2	
	G36	96-31	03-07	364968	O-ring (SB-2002-001)	1	
	G38	96-31	03-07	792739	O-ring (SB-2002-001)	3	
	G42	96-31	03-07	754580	O-ring (SB-2002-001)	3	
	G420	03-08		511810	Gasket/O-ring seal (SB-2002-001)	1	
	M1	96-31		11026435	Solenoid valve, 12 volt, DIN connector	1	
	M12	96-31		11082448	Sensing piston	1	
	M16	96-31		140644	Plug assembly	1	
	M18	96-31		11040532	Plug assembly	1	
	M22	96-31		732982 (9007314-1009)	Screw	4	
	M200	96-31		11026448	Coil kit, 12 volt, Din connecto	1	
	QM200	96-31		11121273	Coil nut kit	1	
	T2	F32	96-31		503380	4-way valve assembly	1
		F324	96-31		730036	O-ring	2
G36		96-31	03-07	364968	O-ring (SB-2002-001)	1	
G38		96-31	03-07	792739	O-ring (SB-2002-001)	3	
G42		96-31	03-07	754580	O-ring (SB-2002-001)	3	
G420		03-08		511810	Gasket/O-ring seal (SB-2002-001)	1	
M1		96-31		11026436	Solenoid valve, 24 volt, DIN connector	1	
M12		96-31			Sensing piston	1	
M16		96-31		140644	Plug assembly	1	
M18		96-31		11040532	Plug assembly	1	
M22		96-31		732982 (9007314-1009)	Screw	4	
M200		96-31		11026449	Coil kit, 24 volt, Din connector	1	
QM200		96-31		11121273	Coil nut kit	1	



Variable Displacement Motor



E100 334E

* = included in base motor seal kit Q210

Enlarged **bold** type item numbers are recommended part to stock for servicing.