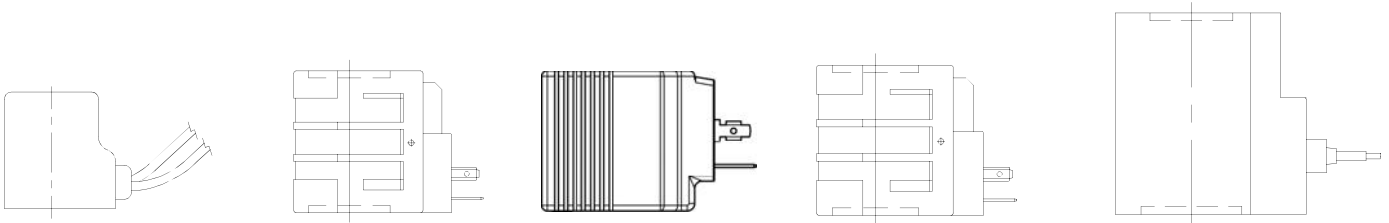


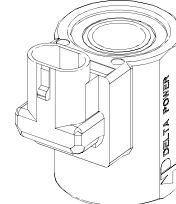
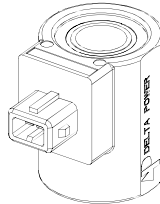


Coil Data



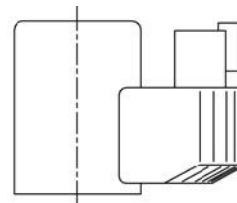
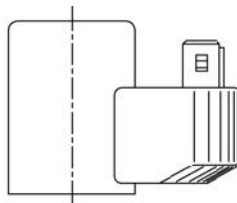
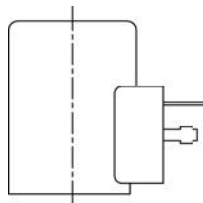
STANDARD COILS

TYPE	ID	WIDTH	HEIGHT	PAGE
M	13/32" [10.1]	1.25" [31.8]	1.47" [37.3]	708
P	1/2" [12.7]	1.25" [31.8]	1.78" [45.3]	710
PJ (Tecnord)	1/2" [12.7]	1.42" [36.0]	1.52" [38.5]	712
D	1/2" [12.7]	1.56" [39.6]	2.03" [51.6]	714
L	5/8" [15.9]	1.56" [39.6]	2.03" [51.6]	716
T	3/4" [19.1]	1.96" [49.7]	2.38" [60.6]	718



IMMERSION PROOF "I" COILS

TYPE	ID	WIDTH	HEIGHT	PAGE
PI	1/2" [13]	1.48" [37.5]	1.70" [43.1]	720
DI	1/2" [13]	1.48" [37.5]	1.97" [50]	711
LI	5/8" [16]	1.48" [37.5]	1.97" [50]	722



Standard Proportional "F" Type Coils (Tecnord)

TYPE	ID	WIDTH	HEIGHT	PAGE
F	3/4" [19.1]	1.46 [37]	1.96" [50]	724

WARNING: The specifications/application data shown in our catalogs and data sheets are intended only as a general guide for the product described (herein). Any specific application should not be undertaken without independent study, evaluation, and testing for suitability.

Phone: (815) 397-6628

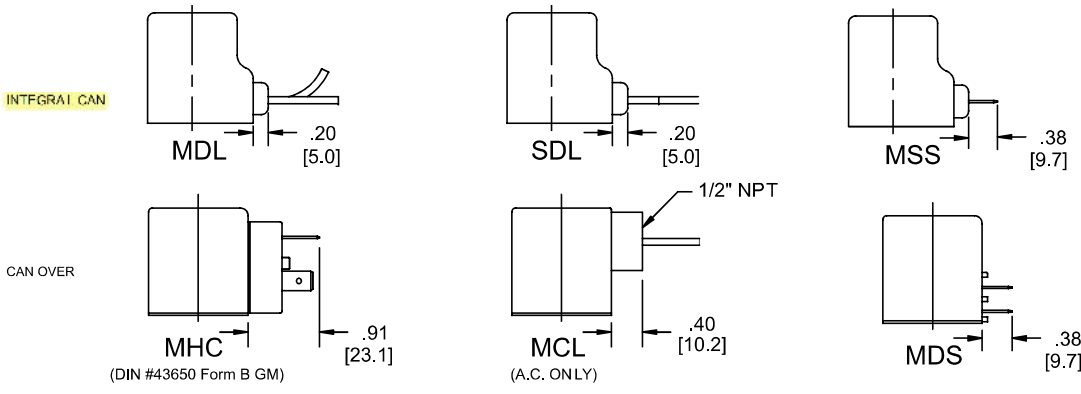
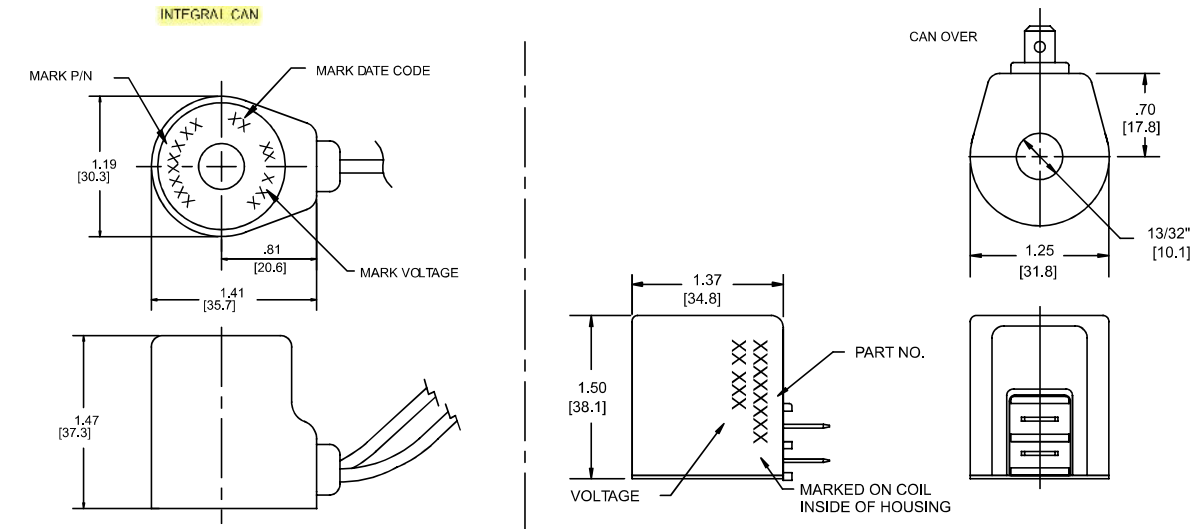
Fax: (815) 397-2526

E-mail: delta@delta-power.com

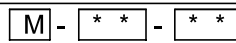


Standard "M" Type Coils

FEATURES: 13/32" I.D.
 Numerous terminals and voltages.
 Heavy gauge color coded
 lead wire.



ORDERING INFORMATION



WHEN ORDERING
 FILL IN ALL BOXES

1: BASIC MODEL NO.	2: TERMINATION	3: VOLTAGE
M-Type coil	(ALL COILS DC VOLTAGE EXCEPT AS NOTED) DL - Double Lead DT - Deutsch on Leads DT04-2 P ML - Metri-Pack on Leads (12162000) PL - Packard on Leads (150 Series) WL - Weatherpack on Leads (12010972) SS - Single Spade DS - Double Spade HC - DIN 43650 (Hirschman) - (AC/DC) CL - Conduit Lead - (AC ONLY) 20 WATT STD. COIL	06 -6VDC 12 -12VDC 24 -24VDC 36 -36VDC 48 -48VDC 25 -24VAC 11 -110VAC 13 -125VAC 22 -220VAC 23 -250VAC 44 -440VAC

FEB. 2005

APPROXIMATE COIL WEIGHT: .24 lbs./1.11 kg.

REV G

APPROXIMATE COIL, CAN, BTM., & NU T ASS'Y WEIGHT: .33 lbs./1.15 kg.

WARNING: The specifications/application data shown in our catalogs and data sheets are intended only as a general guide for the product described (herein). Any specific application should not be undertaken without independent study, evaluation, and testing for suitability.

Phone: (815) 397-6628

Fax: (815) 397-2526

E-mail: delta@delta-power.com



Standard "M" Type Coils

Coil Model Numbers:

Termination	MDL	MSL	MDS	MSS	MHC	MCL		
Description	Double Lead	Single Lead	Double Spade	Single Spade	Hirschmann Connector	Double Lead Conduit	Lead Wire Color	AC Voltage Range
Voltage / Amp							ORANGE	
Voltage / Amp	12VDC / 1.7	12VDC / 1.7	12VDC / 1.7	12VDC / 1.7	12VDC / 1.7		YELLOW	
Voltage / Amp	24VDC / .86	24VDC / .86	24VDC / .86		24VDC / .86		BLUE	
Voltage / Amp	36VDC / .57			36VDC / .57	36VDC / .57		GREEN	
Voltage / Amp	48VDC / .45						BROWN	
Voltage / Amp			24VAC / .74		24VAC / .74	24VAC / .74	BLUE/BLACK	
Voltage / Amp			110VAC* / .17		110VAC* / .17	110VAC* / .17	RED/WHITE	* 100VAC 115VAC
Voltage / Amp							RED	* 115VAC 130VAC
Voltage / Amp			220VAC* / .10		220VAC* / .10	220VAC* / .10	BLACK/WHITE	* 200VAC 230VAC
Voltage / Amp							VIOLET/WHITE	* 225VAC 260VAC
Voltage / Amp							VIOLET	* 400VAC 460VAC

Specifications:

Wattage: 20 watts nominal.

Duty Rating: Continuous duty ±10% rated voltage at 70 °F (21°C) ambient.
Intermittent duty for higher ambient temperature.

Minimum Current for Actuation: 80% of rated current at room temperature.

Magnet Wire Class: N for all voltages.

Temperature Range: -40°F (-40°C) to 392°F (200°C)

Lead Wires: 18 gauge, 22"-24" long, 600 volt rating, with strain relief.

Encapsulating Material: Glass filled polyester, resistant to moisture, caustic solutions, fungus and vibration. Material temperature range is -40 °F (-40°C) to 392 °F (200°C).

Note: Delta Power A.C. Coils incorporate integrally molded full wave rectifiers which are rated for reverse voltage peaks of 1000 volts maximum.

A.C. Coils are rated 50/60 HZ.

* Optimum operating voltage noted.

Conduit connectors on A.C. coils have a maximum torque spec of 3 Ft. Lbs.

WARNING: The specifications/application data shown in our catalogs and data sheets are intended only as a general guide for the product described (herein). Any specific application should not be undertaken without independent study, evaluation, and testing for suitability.

Phone: (815) 397-6628

Fax: (815) 397-2526

E-mail: delta@delta-power.com