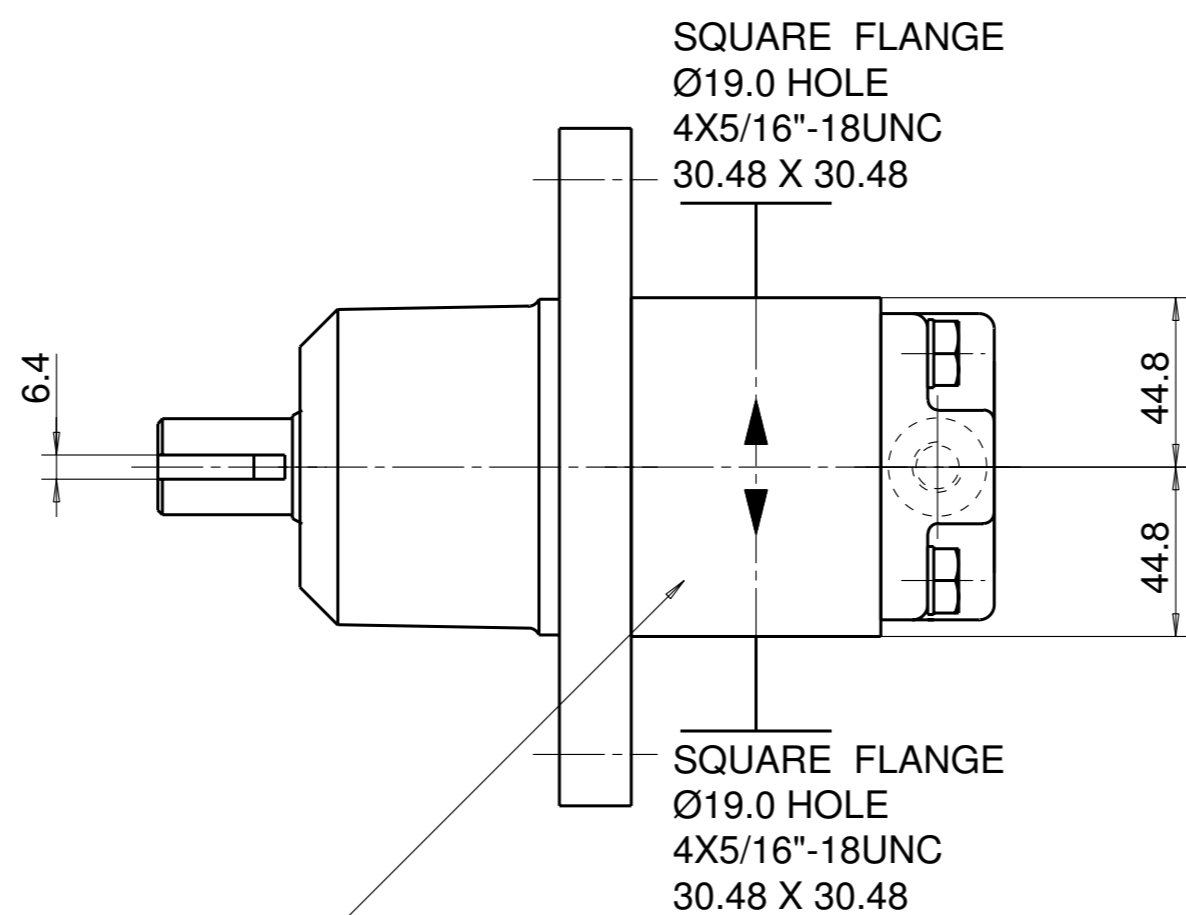
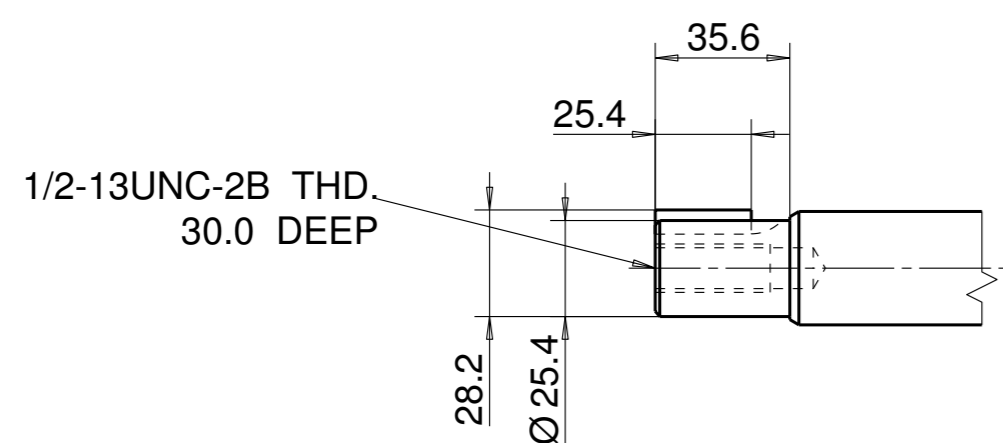
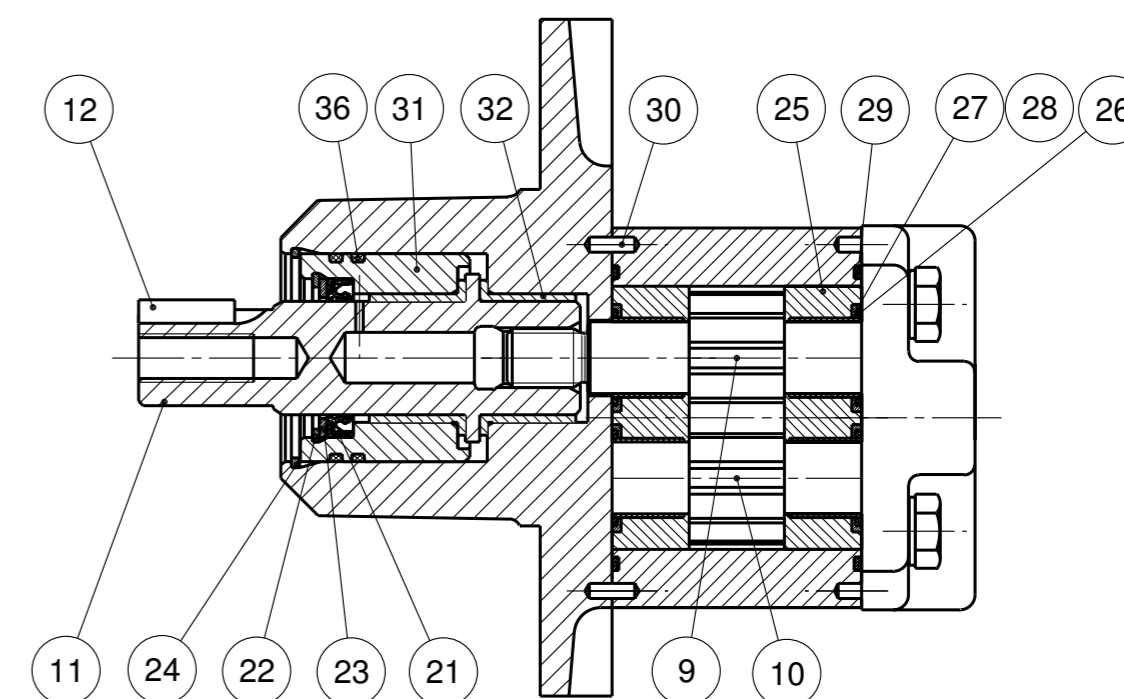


MOTOR DATA	
DISPLACEMENT	16,0 ccm
MAX.CONT.PRESSURE	180 bar
SPEED RATE	500 TO 3500 min ⁻¹
MAX. SHAFT SEAL PRESSURE	2 bar
ROTATION	BI - DIRECTIONAL



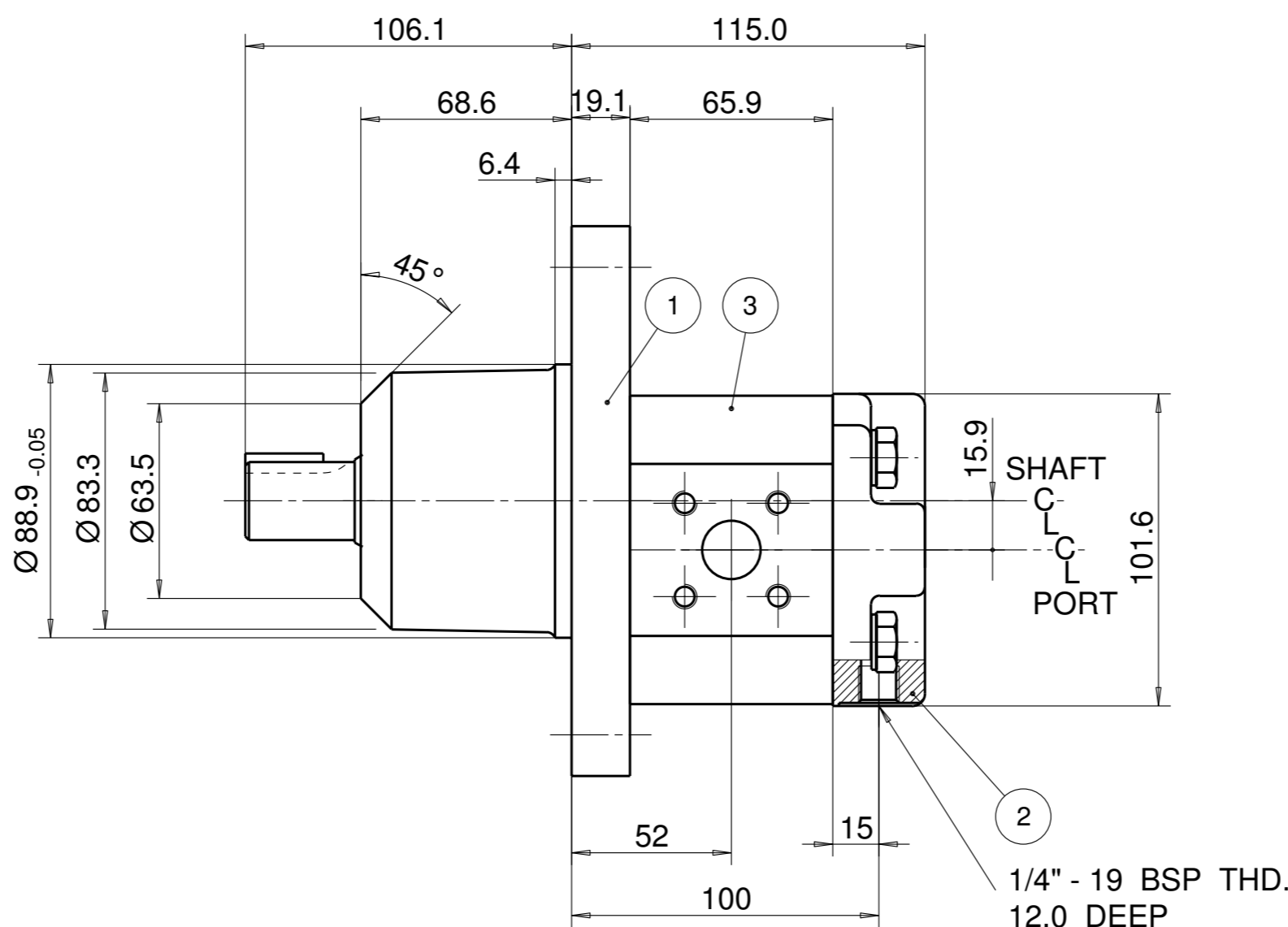
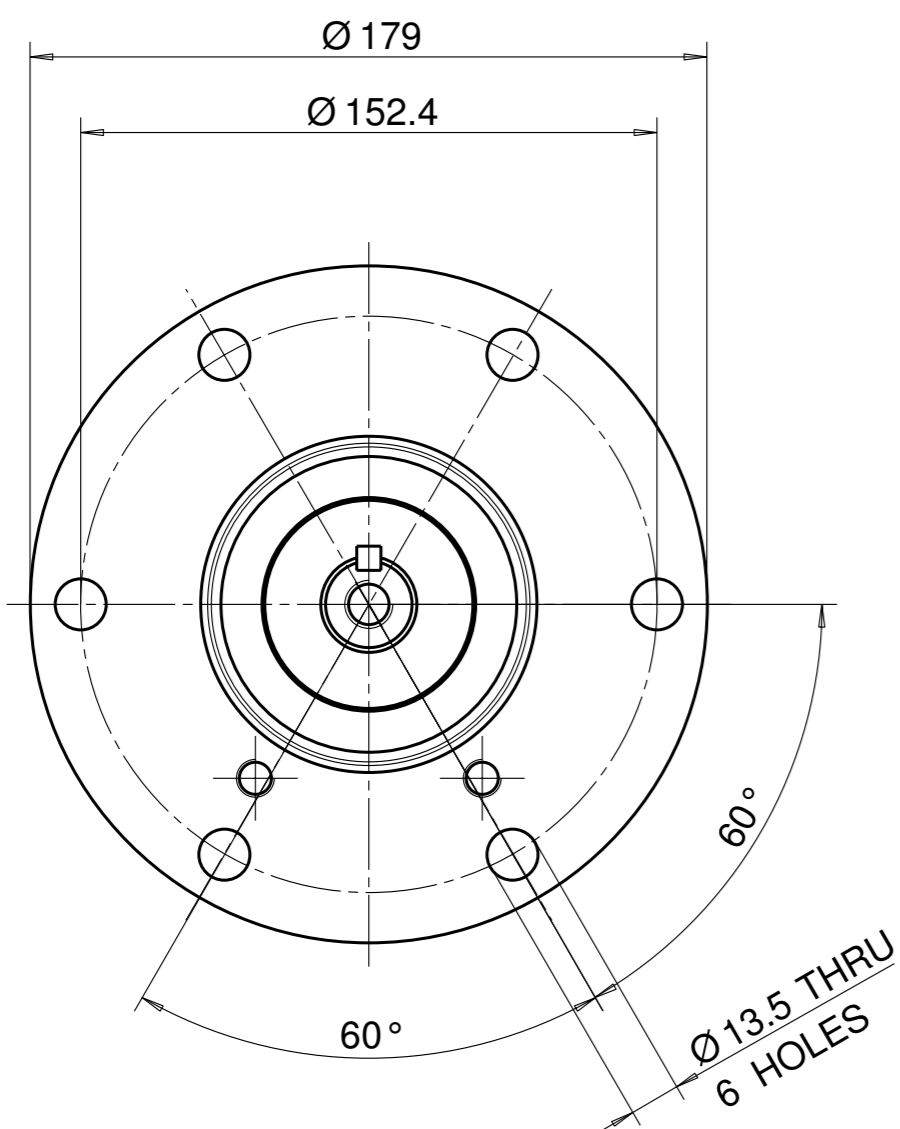
UNIT IDENTIFICATION
(NAMEPLATE)
ON GEAR HOUSING
OR ON GEAR HOUSING



NOTE

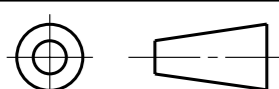
1 FOR ASSEMBLY INSTRUCTIONS SEE DWG. NO. "511-B2"
"PGM511 MOTOR ASSEMBLY INSTRUCTIONS".

ITEM	PART NO	REQ'D	DESCRIPTION	ITEM	PART NO	REQ'D	DESCRIPTION
28	8301-016-0B9	4	SEAL. CHAN.	36	9313-135-00G	2	O-RING
27	8301-016-0AB	4	SEAL. CHAN.	35			
26	8301-015-006	2	SEAL. BK-UP	34			
25	391 2185 133	2	THRBLK/BSHG	33			
24	9211-675-00J	1	RING, SNAP	32	9521-401-00H	2	FLANGED BUSH
23	9222-550-00A	1	WASHER	31	8664-002-00E	1	BRG. CARRIER
22	391 2681 569	1	RING, SNAP	30	391 2080 078	2	PIN. DOWEL
21	9411-409-00W	1	SEAL. LIP	29	9313-145-00B	2	SEAL. SECT.



BOM. COMPONENT							
ITEM	PART NO	REQ'D	DESCRIPTION	ITEM	PART NO	REQ'D	DESCRIPTION
20							
19							
18							
17							
16	391 1401 544	4	SCREW (95 MM)				
15	391 3782 231	4	WASHER				
14							
13							
12	9602-124-00D	1	KEY				
11	8772-004-003	1	EXTENSION SHAFT				
10	334 2716 000	1	DRIVEN GEAR				
9	334 1116 001	1	DRIVE GEAR				
8							
7							
6							
5							
4							
3	334 8116 832	1	HOUSING. GEAR				
2	332 3020 096	1	HOUSING. PEC				
1	334 5059 210	1	HOUSING. SEC				
ITEM	PART NO	REQ'D	DESCRIPTION	ITEM	PART NO	REQ'D	DESCRIPTION

THIRD ANGLE PROJECTION



EXP NO.

FIRST USED

07 - 05 - 918

334 9218 087

SYM.

REVISIONS

UNIT COMPLETELY TO BE PAINTED
EXCEPT : MOUNTING FACE
PORTS
SEAL FACES
NAMEPLATE
COLOUR : BLACK (RAL 9005) SEE ZSS - A1

THIS DOCUMENT CONTAINS INFORMATION THAT IS CONFIDENTIAL AND PROPRIETARY TO PARKER-HANNIFIN CORPORATION ("PARKER"). THIS DOCUMENT IS FURNISHED ON THE UNDERSTANDING THAT THE DOCUMENT AND THE INFORMATION IT CONTAINS WILL NOT BE COPIED OR DISCLOSED TO OTHERS OR USED FOR ANY PURPOSE OTHER THAN CONDUCTING BUSINESS WITH PARKER AND WILL BE RETURNED AND ALL FURTHER USE DISCONTINUED UPON REQUEST BY PARKER. ALL RIGHTS RESERVED.

PGM511A0160BZZ23NK1K1B1B1G2

MATERIAL

ADM CTR M

REV DTE 000000

H.E.-STD:

WT 4.5 kg

DIMENSIONS ARE MM

Parker Pump & Motor Division
Chemnitz

DR. BY	DATE	CH. BY	DATE	SCALE
WS	08MAY07	JS	08MAY07	1/2

334 9218 087

© 2007 Parker Hannifin Corporation