

COUNTERBALANCE VALVE

Ordering Code: **CB-11A-X-Y-Z**

Turn screw clockwise to reduce setting and release load. Complete adjustment range in 3 turns.

Control Option: Maximum extension from locating shoulder. (L Control shown)

22.2 Hex. (7/8" inch)

Pilot ③

M20x1.5

Valve ②

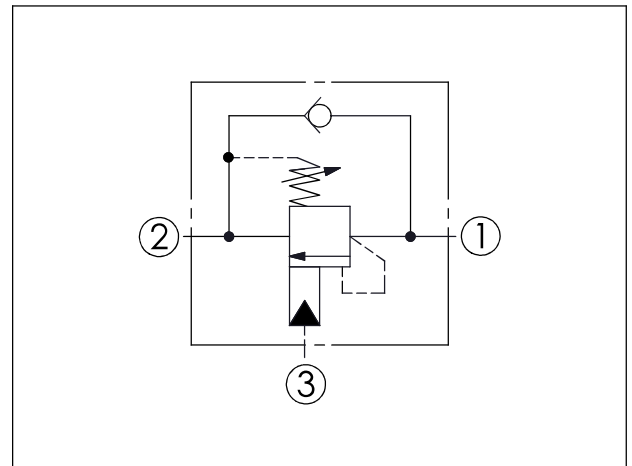
Load ①

50

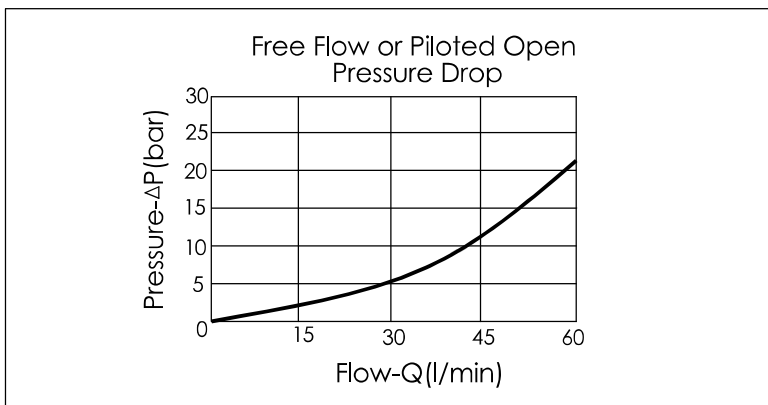
35.1

Locating Shoulder

UNIT:mm



TECHNICAL DATA	
Max. Setting:	280 bar
Rated flow:	60 l/min
Cavity-Tooling:	11A-3
Installation torque:	40-50 Nm
Weight:	0.16 kg
Pressure Setting:	Setting should be 1.3 times maximum load induced pressure.



X	PILOT RATIO	
33	3 : 1	(Standard)
31	1.5 : 1	(Option)
3A	1.5 : 1 (with sealed pilot)	(Standard)
3C	3 : 1 (with sealed pilot)	(Option)

Y	SPRINGS	
ADJUSTMENT RANGES (2 bar Cracking Pressure)		
H	70 to 280 bar	(210 bar Standard Setting)
I	25 to 105 bar	(70 bar Standard Setting)
SPECIAL PURPOSES (0.3 bar Cracking Pressure)		
A	70 to 280 bar	(210 bar Standard Setting)
B	25 to 105 bar	(70 bar Standard Setting)
E	16 to 55 bar	(25 bar Standard Setting)

Z	OPTIONS	
L	Leakproof hex. socket screw.	
LP	Leakproof hex. socket screw. With Stainless Steel External Components	
C	Tamper Resistant Cover.	