

EE-PRB 2 Way, Normally Closed, Proportional Relief Valve

DESCRIPTION

10 size, 7/8-14 thread, "Delta" series, solenoid operated, 2 way normally closed, pilot operated spool type hydraulic relief valve.

OPERATION

The EE-PRB blocks flow from (2) to (1) until sufficient pressure is present at (2) to offset a spring induced force. As solenoid current is increased, it offsets a portion of this force, resulting in a lower relief pressure.

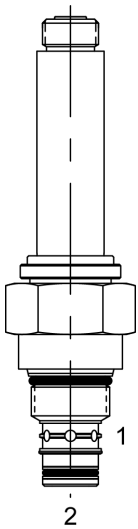
Can be infinitely adjusted across a prescribed range using a variable electric input. Pressure output is inversely proportional to DC current input. This valve is intended for use as a pressure limiting device in demanding applications.

With full current applied to the solenoid, the valve will free flow from (2) to (1), at approximately 50 PSI

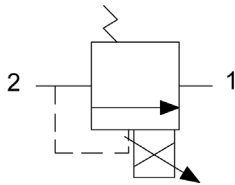
Note: Backpressure on port (1) becomes additive to the pressure setting at a 1:1 ratio.

FEATURES

- Efficient wet-armature construction.
- Cartridges are voltage interchangeable.
- Industry common cavity.
- Unitized, molded coil design.
- Continuous duty rated solenoid.
- Optional coil voltages and terminations.



HYDRAULIC SYMBOL



Great for fan drive motor control.



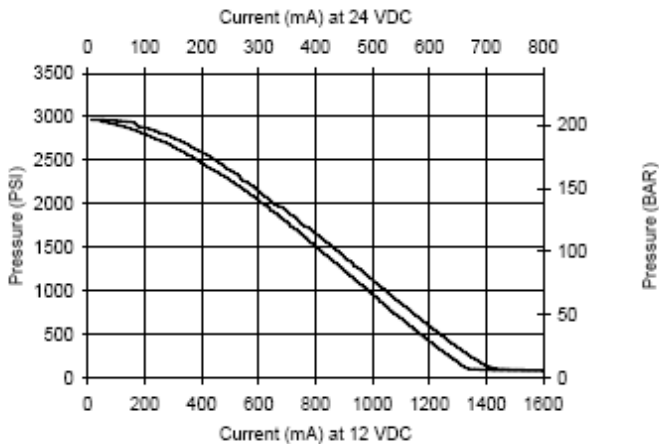
For best performance valve must be purged of air.
Locate below reservoir or add check valve to return.

Recommended vehicle installation is Tube Down or Horizontal after purging. (Air work out of valve) Fasting purge position during bleeding/Start up is with the tube up. (Air works out of valve).

Recommended PWM Frequency 200Hz, for questions consult Factory for specific electrical signal recommendations.

PERFORMANCE

Actual Test Data (Cartridge Only)



VALVE SPECIFICATIONS

Nominal Flow	0-12 GPM (0-45 LPM)
Operating Range	50 - 3000 PSI (3.4-207 bar)
Typical Hysteresis	10% Max
Viscosity Range	36 to 3000 SSU (3 to 647 cSt)
Filtration	ISO 18/16/13
Media Operating Temperature Range	-40° to 250° F (-40° to 120° C)
Weight	.78 lbs. (.35 kg)
Operating Fluid Media	General Purpose Hydraulic Fluid
Cartridge Torque Requirements	30 ft-lbs (40.6 Nm)
Coil Nut Torque Requirements	5-7 ft-lbs (6.8-9.5 Nm)
Cavity	DELTA 2W
Cavity Form Tool (Finishing)	40500000
Seal Kit	21191202

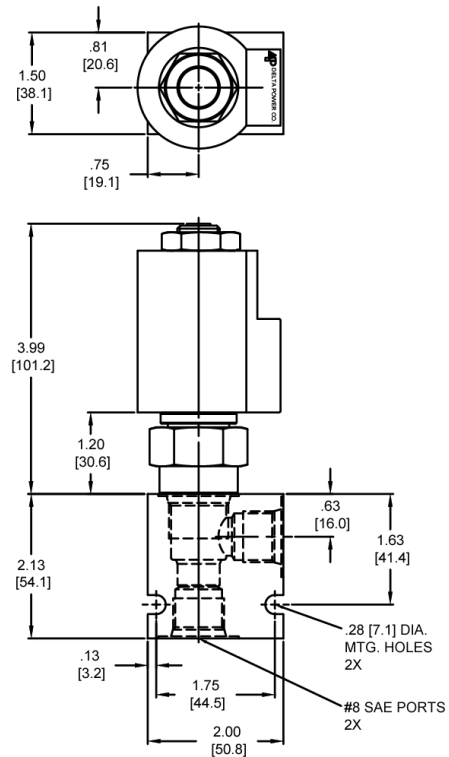
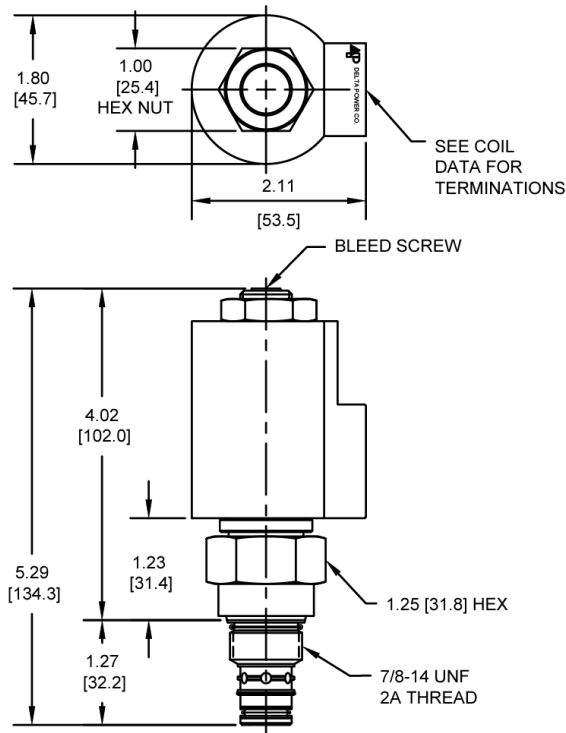
WARNING: The specifications/application data shown in our catalogs and data sheets are intended only as a general guide for the product described (herein). Any specific application should not be undertaken without independent study, evaluation, and testing for suitability.

Phone: (815) 397-6628

Fax: (815) 397-2526

E-mail: delta@delta-power.com

DIMENSIONS



BODY WEIGHT: .47 lbs. [.21 kg.]

ORDERING INFORMATION

EE-PRB

OPTIONS
Buna Standard **00**
Viton Standard **V0**

PRESSURE RANGE
50 - 1500 PSI **15**
50 - 3000 PSI **30**

"T" COIL TERMINATION

DL Double Lead
DT Deutsch on Leads DT04-2P
ML Metri-Pack on Leads
PL Packard on Leads
WL Weatherpack on Leads

DS Double Spade
HC DIN 43650 (Hirschman)

BODIES
Blank
N Without Body
S 3/8 NPT Ports
S #8 SAE Ports

VOLTAGE
06 6 VDC
12 12 VDC
24 24 VDC
36 36 VDC
48 48 VDC

Approximate Coil Weight: .89 lbs. (.41 kg.)

WARNING: The specifications/application data shown in our catalogs and data sheets are intended only as a general guide for the product described (herein). Any specific application should not be undertaken without independent study, evaluation, and testing for suitability.

Phone: (815) 397-6628

Fax: (815) 397-2526

E-mail: delta@delta-power.com