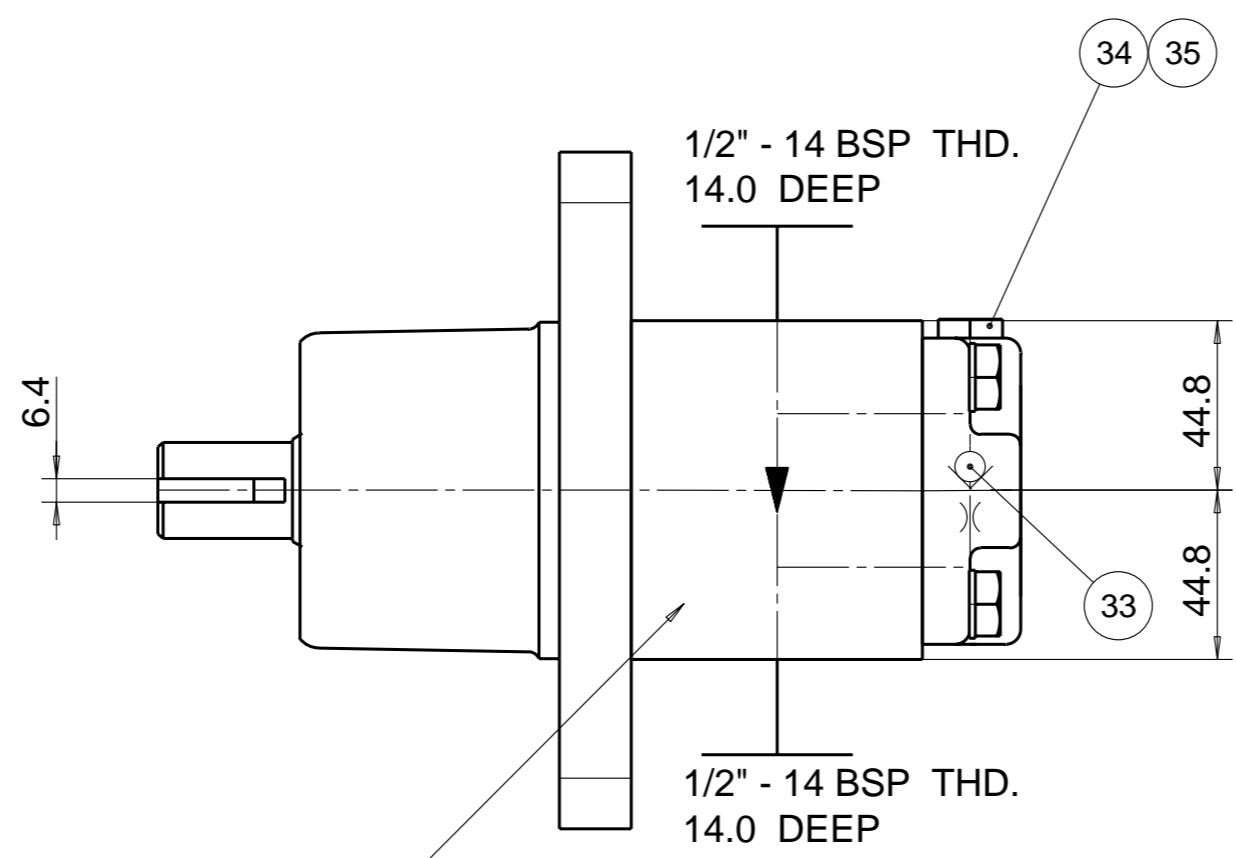
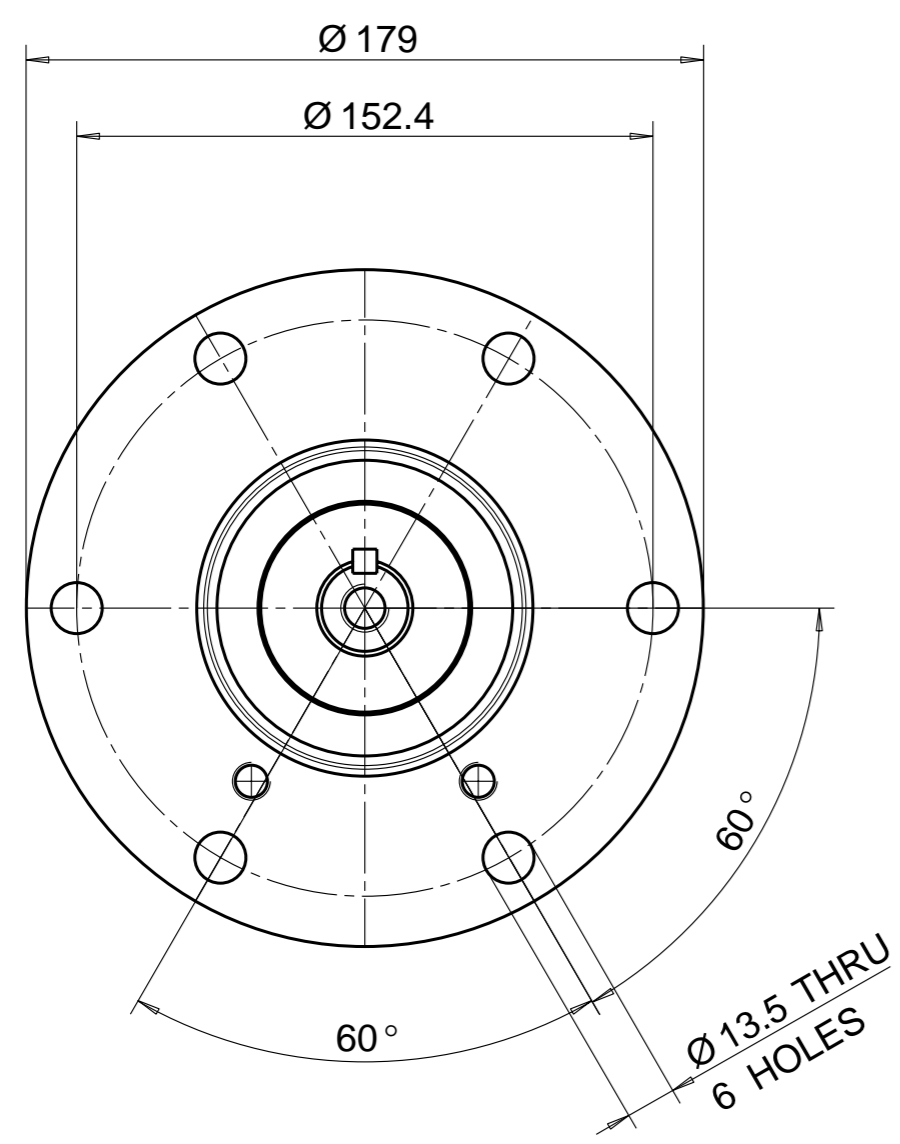
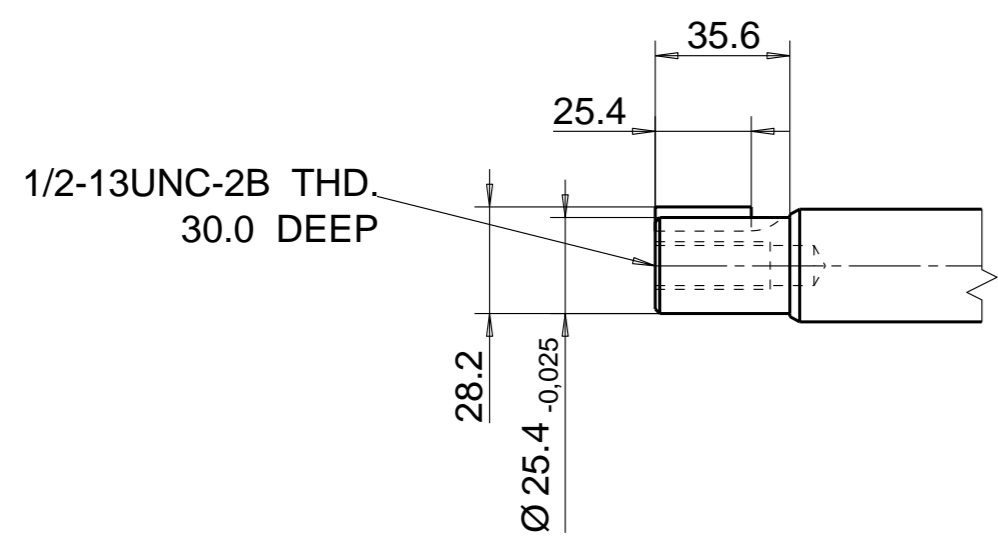
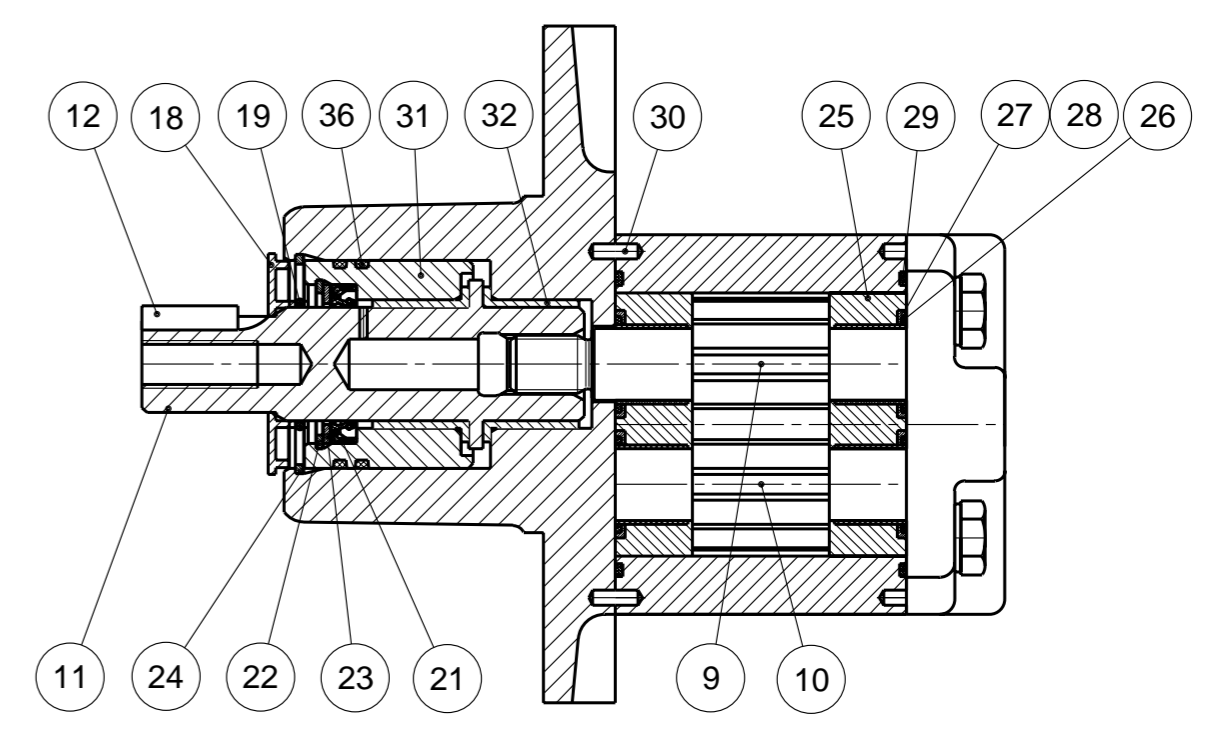
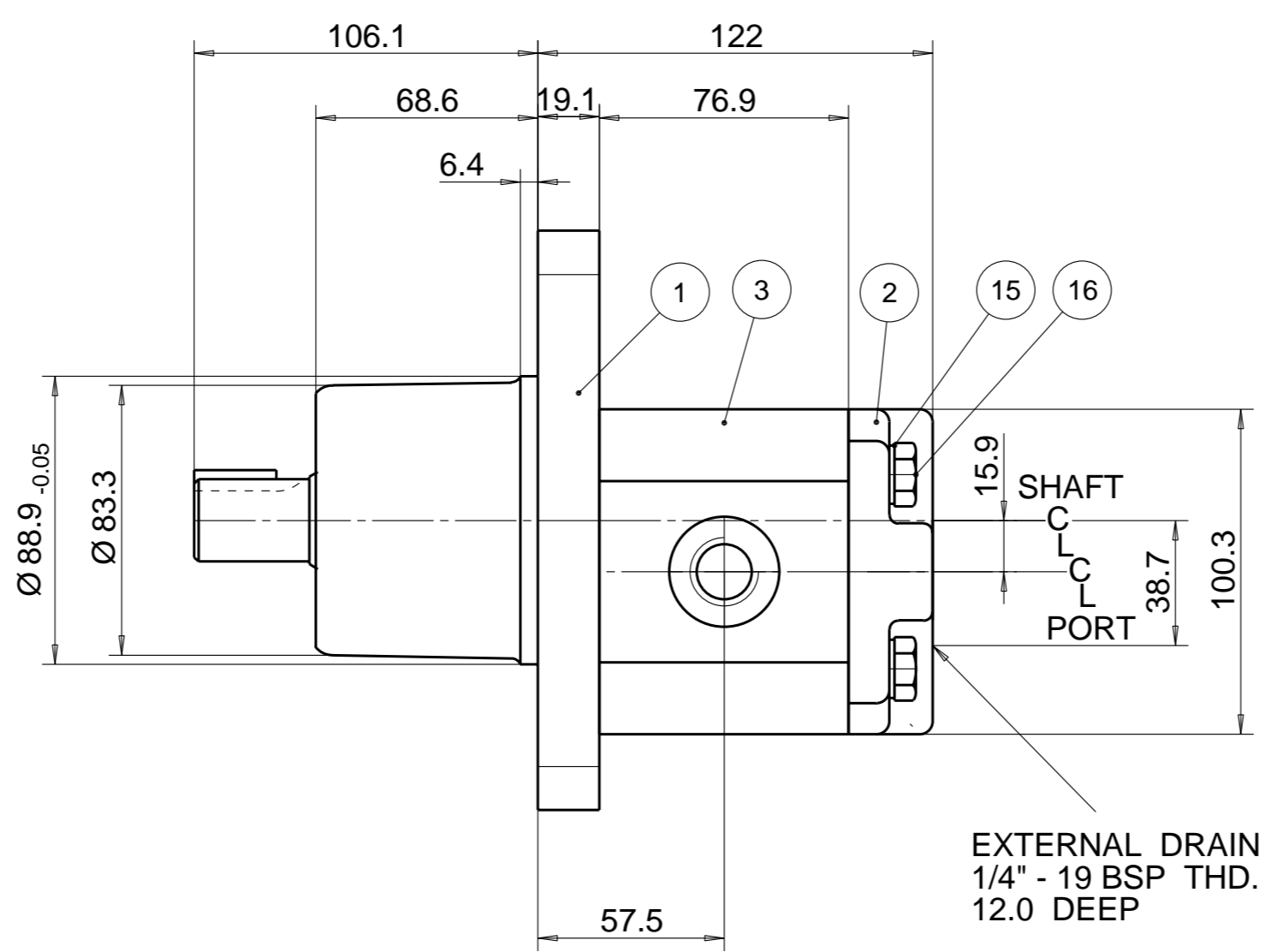


MOTOR DATA	
DISPLACEMENT	23,0 ccm
MAX. PRESSURE	180 bar
SPEED RATE	500 TO 2000 min <sup>-1</sup>
MAX. SHAFT SEAL PRESSURE	2 bar
ROTATION	CLOCKWISE

A



UNIT IDENTIFICATION ON GEAR HOUSING OR ON END COVER



NOTE

1 FOR ASSEMBLY INSTRUCTIONS SEE DWG. NO. "511-B2" "PGM511 MOTOR ASSEMBLY INSTRUCTIONS".

ITEM	PART NO	REQD	ITEM	PART NO	REQD		
28	8301-016-0B9	4	SEAL. CHAN.	36	9313-135-00G	2	O-RING
27	8301-016-0AB	4	SEAL. CHAN.	35	9313-905-00C	1	O-RING
26	8301-015-006	2	SEAL. BK-UP	34	9163-224-ZPE	1	PLUG
25	391 2185 133	2	THRBLK/BSHG	33	8605-019-00N	1	CHECK, VALVE
24	9211-675-00J	1	RING, SNAP	32	9521-401-00H	2	FLANGED BUSH
23	9222-550-00A	1	WASHER	31	8664-002-00E	1	BRG. CARRIER
22	391 2681 569	1	RING, SNAP	30	391 2080 078	2	PIN. DOWEL
21	9411-409-00W	1	SEAL. LIP	29	9313-145-00B	2	SEAL. SECT.

ITEM	PART NO	REQ'D	DESCRIPTION
20			
19	9213-126-00S	1	RING, SNAP
18	8679-008-00X	1	PROTECTION RING
17			
16	391 1401 546	4	SCREW (105 MM)
15	391 3782 231	4	WASHER
14			
13			
12	9602-124-00D	1	KEY
11	8772-004-003	1	EXTENSION SHAFT
10	334 2723 000	1	DRIVEN GEAR
9	334 1123 001	1	DRIVE GEAR
8			
7			
6			
5			
4			
3	334 8523 404	1	HOUSING. GEAR
2	1PXC07B1B1C1B1P	1	HOUSING. PEC
1	334 5059 205	1	HOUSING. SEC

THIRD ANGLE PROJECTION
EXP NO.
FIRST USED
06 - 07 - 908
334 9214 038

A	REACTIVATED WITH CHANGE TO 23CC
SYM.	REVISIONS 24FEB10 JS 10-02-966

THIS DOCUMENT CONTAINS INFORMATION THAT IS CONFIDENTIAL AND PROPRIETARY TO PARKER-HANNIFIN CORPORATION ("PARKER"). THIS DOCUMENT IS FURNISHED ON THE UNDERSTANDING THAT THE DOCUMENT AND THE INFORMATION IT CONTAINS WILL NOT BE COPIED OR DISCLOSED TO OTHERS OR USED FOR ANY PURPOSE OTHER THAN CONDUCTING BUSINESS WITH PARKER AND WILL BE RETURNED AND ALL FURTHER USE DISCONTINUED UPON REQUEST BY PARKER. ALL RIGHTS RESERVED.

**PGM511D0230CZ2Z3NE3E3B1B1G4**

MATERIAL	ADM CTR M
H.E.-STD:	REV DTE 24FEB10
	WT

DIMENSIONS ARE MM

Parker Pump & Motor Division Chemnitz				
DR. BY	DATE	CH. BY	DATE	SCALE
WS	04JUL06	JS	04JUL06	1/2
<b>334 9214 038</b>				
© 2006 Parker Hannifin Corporation				