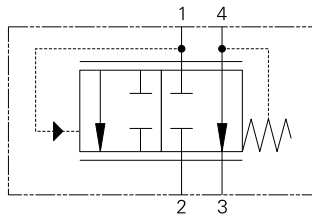


PCS4-16 - Pressure compensator

Bypass or priority
114 L/min (30 USgpm) • 210 bar (3000 psi)



Operation

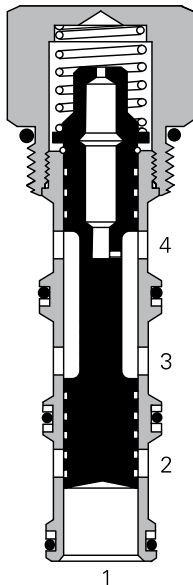
This valve, when used with either a fixed or variable orifice on port 4, maintains a constant flow out of port 3, regardless of pressure changes downstream of port 3. This is based on whatever pressure differential is chosen. All

flow in excess of the priority requirement is bypassed from port 1 to port 2. If the priority port is deadheaded, the valve will try to direct flow out of the priority port and shut off the bypass flow, blocking of all flow.

Features

Hardened and ground and honed working components. Cartridge construction for maximum mounting flexibility.

Sectional view



Performance data

Ratings and specifications

Performance data is typical with fluid at 21,8 cSt (105 SUS) and 49° C (120° F)

Typical application pressure (all ports)	210 bar (3000 psi)
Cartridge fatigue pressure (infinite life)	210 bar (3000 psi)
Rated flow	114 L/min (30 USgpm)
Cavity	C-16-4
Standard housing materials	Customized housings are necessary for close-coupling, the compensator and orifice
Temperature range	-40° to 120° C (-40° to 248° F)
Fluids	All general purpose hydraulics fluids such as: MIL-H-5606, SAE 10, SAE 20 etc
Filtration	Cleanliness code 18/ 16/13
Weight cartridge only	0,50 kg (1.12 lbs)
Seal kit	889660 (Buna-N), 02-175435 (Viton®)

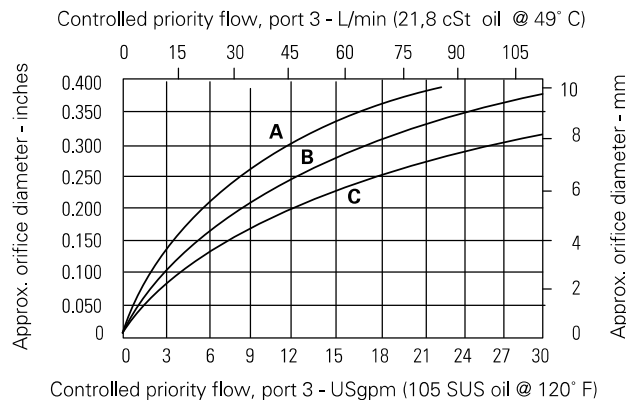
Viton is a registered trademark of E.I. DuPont

Description

This is a priority style compensator suitable for use with a separate needle valve or orifice to provide a priority pressure compensated flow. This when used in a manifold is ideal for motor or cylinder control where priority is required.

Performance characteristics

Cartridge only



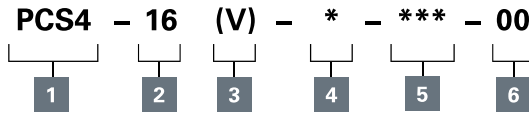
- A** - 2,8 bar (40 psi) (control ΔP)
- B** - 5,5 bar (80 psi) (control ΔP)
- C** - 11,0 bar (160 psi) (control ΔP)

Where measurements are critical request certified drawings. We reserve the right to change specifications without notice.

PCS4-16 - Pressure compensator

Bypass or priority
114 L/min (30 USgpm) • 210 bar (3000 psi)

Model code



1 Function

PCS4 - Pressure compensator restrictive type

2 Size

16 - 16 size

3 Seal material

Blank - Buna-N
V - Viton®

4 Port size

0 - Cartridge only
(Customized housings are necessary for close-coupling, compensator and orifice)

5 Pressure differential (Nominal)

40 - 2,8 bar (40 psi)
80 - 5,5 bar (80 psi)
160 - 11,0 bar (160 psi)

6 Special features

00 - None
(Only required if valve has special features, omit if "00".)

Dimensions

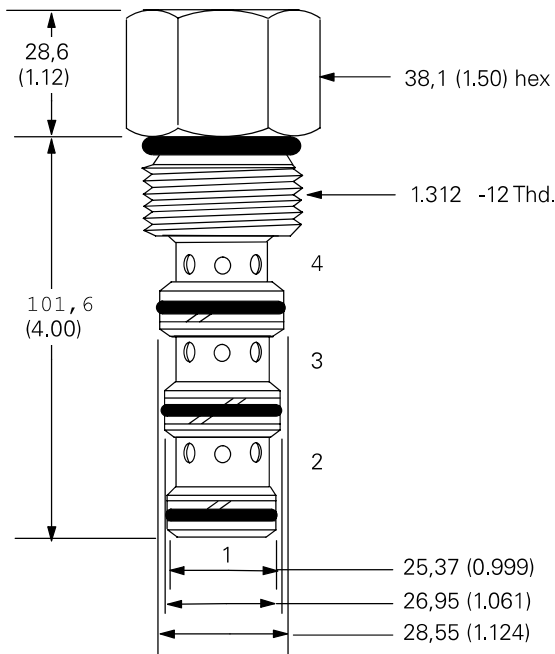
mm (inch)

Cartridge only

Basic code
PCS4-16

Torque into aluminum housing to 108-122 Nm (80-90 ft lbs)

Torque into steel housing to 136-149 Nm (100-110 ft lbs)



Where measurements are critical request certified drawings. We reserve the right to change specifications without notice.