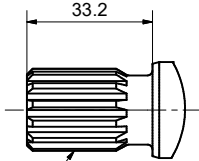
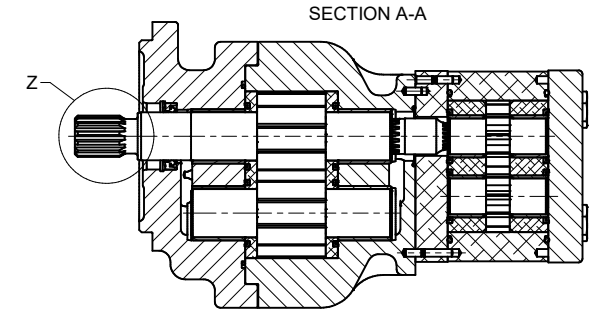
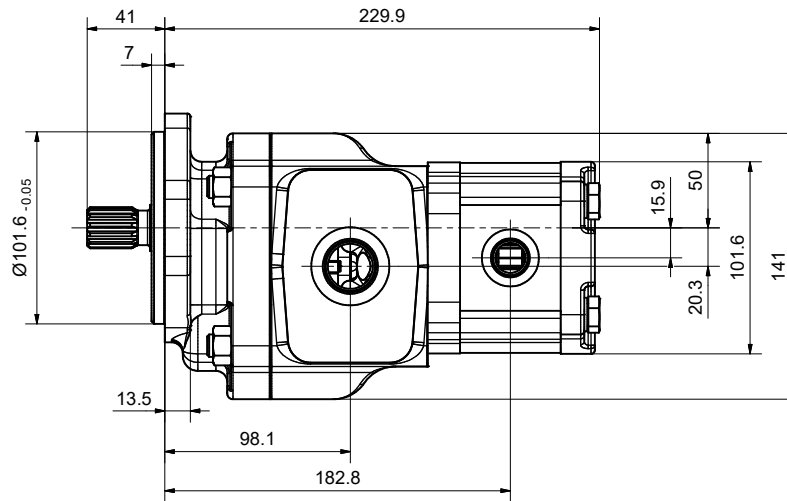
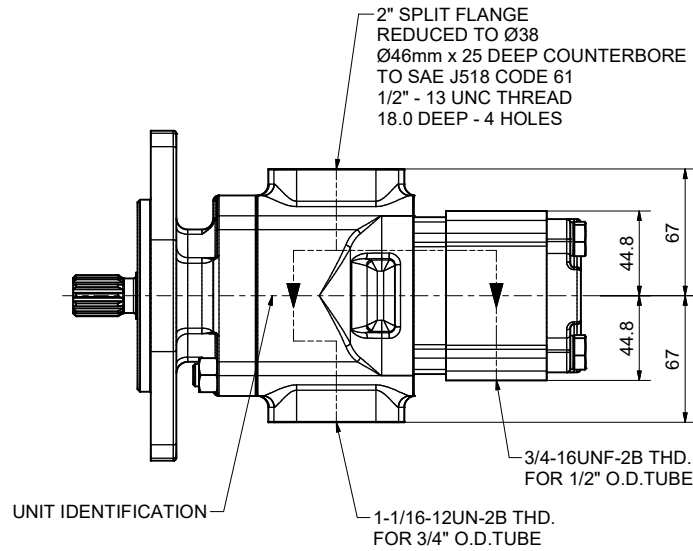
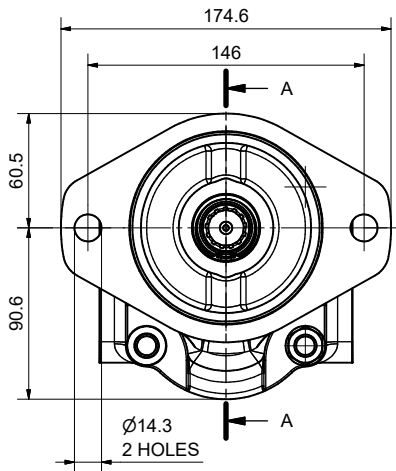


PUMP DATA		PUMP I	PUMP II
DISPLACEMENT		33.0 ccm	8.0 ccm
MAXIMUM PRESSURE		275 bar	210 bar
SPEED RATE		500 TO 3000 rpm	
MAX. INPUT SHAFT TORQUE		272 Nm	
ROTATION		CLOCKWISE	

DETAIL Z  
(1:1)

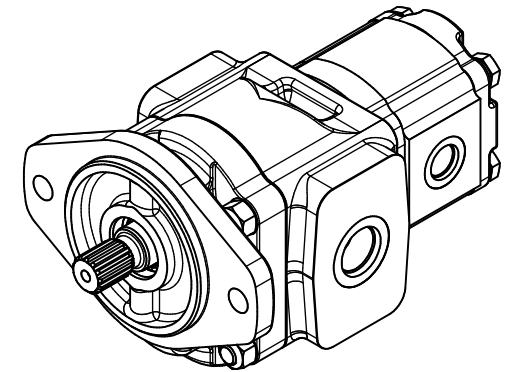


SAE INVOLUTE SPLINE  
13 TEETH - 16/32 PITCH  
FLAT ROOT SIDE FIT  
MAJOR DIA 21.67-21.79  
MINOR DIA 18.631 MAX.



NOTE:

- 1 FOR ASSEMBLY INSTRUCTIONS, SEE dwg. "620-B1 & 511-B1" "PGP620 & PGP511 ASSEMBLY INSTRUCTIONS".
- 2 NAMEPLATE LOCATION MAY VARY DUE TO DESIGN CRITERIA OR MANUFACTURING LOCATION



ALL SURFACES MUST BE PAINTED, EXCEPT:  
- FLANGE SPIGOT, MOUNTING FACE AND DRIVE SHAFT  
- PORT AREAS AND SEAL FACES,  
- NAMEPLATES WITHOUT PAINT PROTECTION FILM  
COLOR: BLACK (RAL 9005) SEE ZSS - A1

REV	DESCRIPTION	DATE	ENGINEER
E	REDRAWN WITH UPDATES AS AGREED	30.09.2022	TG

<b>Parker PARKER HANNIFIN CORPORATION</b>			
<b>PUMP AND MOTOR DIVISION EUROPE</b> Neefstraße 56 Chemnitz 09116			
DESCRIPTION: PGP620B0330CD1H3V57D5C-511A0080XB1D3B1B1			
ECD: 0413205	DRAWN BY: TG	DATE: 30.09.2022	Material:
ECD DATE: 12.10.2022	CHECKED BY: JS	APPROVED BY: JS	DRAWING NO.:
THIRD ANGLE PROJECTION	UNITS: MM	MASS: 14.4 kg	REV.:
SHEET: 1 OF 1	SCALE: 1:2		7029521052

SEWR-NR: 22-09-614	TOLERANCES UNLESS OTHERWISE SPECIFIED = REF. DIMENSIONS
--------------------	---