

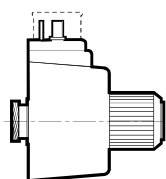
**Solenoid kit (displayed: EN plug)**

A solenoid kit contains tube, coil, retainer and seals for the solenoid.

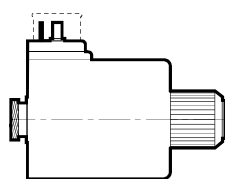
**Coil kit**

A coil kit contains coil, retainer and seals for the coil.

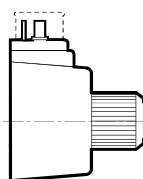
2



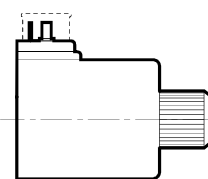
AC



DC



AC



DC

**For D1VW standard**

Solenoid kits: <b>AK-D1VW-S-...</b> (Soft shift on request)		(Example: <b>AK-D1VW-S-JW-91</b> )	
Voltage Volt/Hertz	Voltage Code	EN plug D1VW	EN plug without manual override (Code „T“) D1VW
12V=	K	<b>KW-91</b>	KWT-91
24V=	J	<b>JW-91</b>	JWT-91
98V=	U	UW-91	UWT-91
205V=	G	GW-91	GWT-91
110V/50Hz / 120V/60Hz	Y	<b>YW-91</b>	-
230V/50Hz / 240V/60Hz	T	<b>TW-91</b>	-

Coil kits: <b>AK-D1VW-C-...</b> (Example: <b>AK-D1VW-C-JW-91</b> )		EN plug D1VW
Voltage Volt/Hertz	Voltage Code	EN plug D1VW
12V=	K	<b>KW-91</b>
24V=	J	<b>JW-91</b>
98V=	U	UW-91
205V=	G	GW-91
110V/50Hz / 120V/60Hz	Y	<b>YW-91</b>
230V/50Hz / 240V/60Hz	T	<b>TW-91</b>

**D1VW 8 Watt**

Solenoid kits: <b>AK-D1VW-S-...</b>				Coil kits: <b>AK-D1VW-C-...</b>	
Voltage Volt/Hertz	Voltage Code	EN plug D1VW	M12x1 „DESINA“ (Code „DLJ5“) D1VW	EN plug D1VW	M12x1 „DESINA“ (Code „DLJ5“) D1VW
24V=	J	JWL-91	JDLJ5-91	<b>JWL-91</b>	JDLJ5-91

**D3W**

Solenoid kits: <b>AK-D3W-S-...</b> (Soft shift on request) (Example: <b>AK-D3W-S-JW-30</b> )					Coil kits: <b>AK-D3W-C-...</b>	
Voltage Volt/Hertz	Voltage Code	EN plug D3W	EN plug without manual override (Code „T“) D3W	EN plug with 210bar tank pressure (Code „H“) D3W	EN plug D3W	EN plug without manual override (Code „T“) D3W
12V=	K	KW-30	KWT-30	KW-30	KW-30	KWT-30
24V=	J	<b>JW-30</b>	JWT-30	JW-30	<b>JW-30</b>	JWT-30
98V=	U	UW-30	UWT-30	UW-30	UW-30	UWT-30
205V=	G	GW-30	GWT-30	GW-30	GW-30	GWT-30
110V/50Hz / 120V/60Hz	Y	<b>YW-30</b>	-	YWH-30	<b>YW-30</b>	-
230V/50Hz / 240V/60Hz	T	<b>TW-30</b>	-	TWH-30	<b>TW-30</b>	-

Other solenoids, coil kits and tube kits on request.

**Bold letters = Short-term availability**