

# DA Series: How to order a diaphragm accumulator

➤ DA - 075 - 210 00 C F 11 02 P XXX

DA - 140 - 140 90 A F 11 25 P000

## Product Type

DA Diaphragm Accumulators

## Volume

007 0,075L  
 016 0.16L  
 032 0.32L  
 050 0.5L  
 075 0.75L  
 100 1L  
 140 1.4L  
 200 2L  
 280 2.8L  
 350 3.5L

## Working Pressure

100 100 bar  
 140 140 bar  
 210 210 bar  
 250 250 bar  
 350 350 bar

## Approval

00 PED 2014/68/EU Art. 4.3  
 90 EC (according to PED 2014/68/EU)

## Fluid connection

A G 1/2"  
 B G 3/4"  
 C G 1/2" + External thread M33x1,5  
 D G 3/4" + External thread M45x1,5

## Gas connection

F M28x1,5

## Construction

11 Carbon steel shell

## Membrane rubber compound

25 NBR  
 02 ECO

## Precharge

000 No-precharge  
 XXX 005 to 130bar (Step 5 by 5)

Stickstofffüllung auf Anfrage!

# DA Series 140 - 350 BAR, 0.075 to 0.75 Litres

**ECO rubber mix (previous known as ELM range)**

Standard Version (Carbon steel /mix **ECO**) compatible with mineral oils (2)

According to PED 2014/68/EU.

Product, Part numbers, Accessories

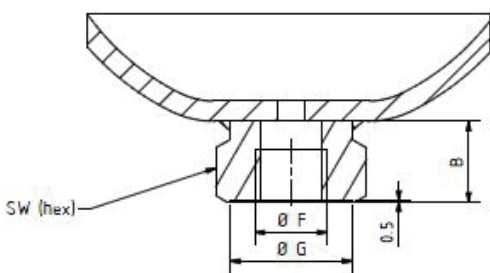
**E-configurable product**  
 visit [Parker.com/acde](http://Parker.com/acde)

Type Part number	Clamps Model (quantity) Part number	Lock nut Model (quantity) Part number	Cross Reference OLAER	Cross Reference ADE
DA-0.075L-250BAR-10849201102 DA-007-25000AF1102PXXX*	-	-	ELM 0.075-250/00/AF* 10849201102	ADE007-25R9A2
DA-0.16L-250BAR-10849301102 DA-016-25000AF1102PXXX*	-	-	ELM 0.16-250/00/AF* 10849301102	ADE016-25R9A2
DA-0.32L-210BAR-10986601102 DA-032-21000AF1102PXXX*	E95 (1) 20250803648	-	ELM 0.32-210/00/AF* 10986601102	ADE032-21R9A2
DA-0.50L-210BAR-10849501102 DA-050-21000AF1102PXXX*	E106 (1) 20250903648	-	ELM 0.5-210/00/AF* 10849501102	ADE050-21R9A2
DA-0.50L-210BAR-10849601102 DA-050-21000CF1102PXXX*	E106 (1) 20250903648	M33x1.5 10945700100	ELM 0.5-210/00/CF* 10849601102	
DA-0.75L-210BAR-10849701102 DA-075-21000AF1102PXXX*	E114 (1) 20251003648	-	ELM 0.75-210/00/AF* 10849701102	ADE075-21R9A2
<b>DA-0.75L-210BAR-10849801102</b> DA-075-21000CF1102PXXX*	E114 (1) 20251003648	M33x1.5 10945700100	<b>ELM 0.75-210/00/CF*</b> <b>10849801102</b>	
DA-0.75L-350BAR-10931801102 DA-075-35000AF1102PXXX*	E136 (1) 20251103648	-	ELM 0.75-350/00/AF* 10931801102	
DA-0.75L-350BAR-10931901102 DA-075-35000CF1102PXXX*	E136 (1) 20251103648	M33x1.5 10945700100	ELM 0.75-350/00/CF* 10931901102	

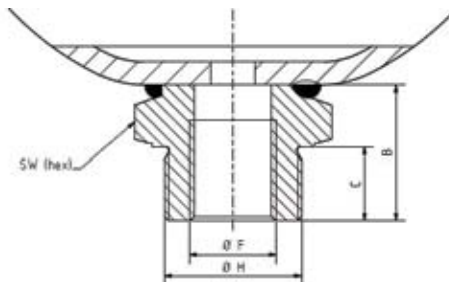
(2) For other fluids consult Parker

\* According to Article 4.3 PED 2014/68/EU

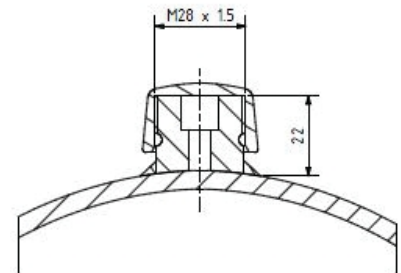
Form A/ Form B



Form C/ Form D



Gas Valve



Type Part number	Effective Gas vol. Litres	Max. Working pressure (PS) bar	Temp. Min/ Max (°C)	Max. Pre-charge bar	Max compres- sion in bar ratio P2/P0	Max Pressure amplitude P2-P1	Weight kg	Dimensions in mm						Oilport	
								A max Height	B	C	SW	D	G	F	H
DA-0.075L-250BAR-10849201102	0.075	250	-10/+80	130	8	210	0.7	112	20		32	64	29	G½	-
DA-0.16L-250BAR-10849301102	0.16	250	-10/+80	130	6	210	1	120	20		32	75	29	G½	-
DA-0.32L-210BAR-10986601102	0.32	210	-10/+80	130	8	140	1.4	135	20		32	92	29	G½	-
DA-0.50L-210BAR-10849501102	0.5	210	-20/+80	130	8	175	2	153	22		41	107	34	G½	-
DA-0.50L-210BAR-10849601102	0.5	210	-20/+80	130	8	175	2	164	33	18	41	107	-	G½	M33x1.5
DA-0.75L-210BAR-10849701102	0.75	210	-20/+80	130	8	175	2.6	167	22		41	122	34	G½	-
DA-0.75L-210BAR-10849801102	0.75	210	-20/+80	130	8	175	2.6	178	33	18	41	122	-	G½	M33x1.5
DA-0.75L-350BAR-10931801102	0.75	350	-20/+80	130	8	150	4	174	22		41	128	34	G½	-
DA-0.75L-350BAR-10931901102	0.75	350	-20/+80	130	8	150	4	185	33	18	41	128	-	G½	M33x1.5

Lock-nut

